



**AIRWORK**  
PNEUMATIC EQUIPMENT

2024

---

EN

PNEUMATIC CYLINDERS  
ASSEMBLING KITS

FR

**KIT DE MONTAGE POUR  
VERINS PNEUMATIQUES**

IT

*KIT DI MONTAGGIO PER CILINDRI  
PNEUMATICI*

**EN** - Airwork offers to all Distributors and main Partners a new tool that allows them to assemble our pneumatic cylinders independently.

In this way it will be possible to support the needs of the end customer in terms of speed and customization.

In fact, with this new catalog dedicated to mounting kits, the customer can decide to buy any type of model, version and size including profiled tubes, chromed bars and replacement gasket kits.

After ordering the chosen products, our technical department will be at your disposal for sending the construction drawings for cutting the profiles and for machining the rods, as well as all the necessary instructions for assembly and final testing.

**FR** - Airwork met à disposition de tous les Distributeurs et Partenaires principaux un nouvel outil qui permet d'assembler en autonomie nos vérins pneumatiques.

De cette façon, il sera possible de répondre aux besoins du client final en termes de vitesse et de personnalisation.

En effet, avec ce nouveau catalogue dédié aux kits de montage, le client pourra décider d'acheter tout type de modèle, version et taille, y compris les tubes profilés, les barres chromées et les kits de joints de rechange.

Après avoir commandé les produits choisis, notre service technique sera à votre disposition pour l'envoi des plans de construction pour la coupe des profils et pour l'usinage des tiges, ainsi que toutes les instructions nécessaires pour le montage et l'essai final.

**IT** - Airwork mette a disposizione di tutti i Distributori e Partner principali un nuovo strumento che permette di assemblare in autonomia i nostri cilindri pneumatici.

In questo modo sarà possibile supportare le esigenze del cliente finale in termini di velocità e personalizzazione.

Infatti con questo nuovo catalogo dedicato ai kit di montaggio, il cliente potrà decidere di acquistare qualsiasi tipo di modello, versione e taglia compresi i tubi profilati, le barre cromate e i kit di guarnizione di ricambio.

Dopo aver ordinato i prodotti scelti, il nostro ufficio tecnico sarà a vostra disposizione per l'invio dei disegni costruttivi per il taglio dei profili e per la lavorazione degli steli, oltre che tutte le istruzioni necessarie per il montaggio e il collaudo finale.



CYLINDERS ISO 6432  
**VERINS ISO 6432**  
*CILINDRI ISO 6432*

**KM**

**PAGE**  
1.4



CYLINDERS ISO 6432 - STAINLESS STEEL  
**VERINS ISO 6432 - ACIER INOXYDABLE**  
*CILINDRI ISO 6432 - ACCIAIO INOX*

**KX**

**PAGE**  
1.5



ROUND CYLINDERS  
**VERINS RONDS**  
*CILINDRI TONDI*

**KT**

**PAGE**  
1.6



CYLINDERS ISO 15552- CF SERIES  
**VERINS ISO 15552 - SERIE CF**  
*CILINDRI ISO 15552 - SERIE CF*

**KL**

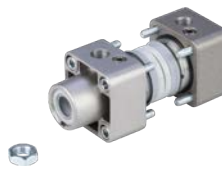
**PAGE**  
1.7



CYLINDERS ISO 15552- CY / CZ SERIES  
**VERINS ISO 15552 - SERIE CY / CZ**  
*CILINDRI ISO 15552 - SERIE CY / CZ*

**KY**

**PAGE**  
1.8



CYLINDERS ISO 15552- CQ SERIES  
**VERINS ISO 15552 - SERIE CQ**  
*CILINDRI ISO 15552 - SERIE CQ*

**KQ**

**PAGE**  
1.9



CYLINDERS ISO 21287- CM SERIES  
**VERINS ISO 21287 - SERIE CM**  
*CILINDRI ISO 21287 - SERIE CM*

**KK**

**PAGE**  
1.10



GUIDE UNITS KITS  
**KIT POUR UNITES DE GUIDAGE**  
*KIT PER UNITÀ DI GUIDA*

**KG**

**PAGE**  
1.11



ASSEMBLING TOOLS  
**ACCESSOIRES DE MONTAGE**  
*ACCESSORI PER IL MONTAGGIO*

**PAGE**  
1.12





ASSEMBLING KIT / **KIT DE MONTAGE** / **KIT DI MONTAGGIO**

**K M 3 0 0 0 M 0 0**

→ Ø cylinder / Ø vérin / Ø cilindro (08 - 10 - 12 - 16 - 20 - 25 mm)

M= Magnetic / **Magnétique** / *Magnetico*  
 0= Non magnetic / **Non magnétique** / *Non magnetico*

VERSION / **VERSION** / *VERSIONE*

18= Double acting / **Double effet** / *Doppio effetto (STANDARD)*

16= Single acting front spring / **Simple effet tige rentrée** / *Semplice effetto molla anteriore*

17= Single acting rear spring / **Simple effet tige sortie** / *Semplice effetto molla posteriore*

19= Double acting with cushioning / **Double effet amorti** / *Doppio effetto con ammortizzo*

20= Double acting through rod / **Double effet tige traversante** / *Doppio effetto stelo passante*

21= Double acting through rod with cushioning / **Double effet tige traversante amorti** / *Doppio effetto stelo passante con ammortizzo*

SEALS / **JOINTS** / *GUARNIZIONI*

0= (STANDARD) (-20°C / +80°C)

2= High temperature / **Haute température** / *Alta temperatura (-10°C / +150°C)*

4= Viton on the rod only / **Viton sur la tige uniquement** / *Viton solo sullo stelo*

7= Low temperature / **Basse température** / *Bassa temperatura (-40°C / +80°C)*

VERSION / **VERSION** / *VERSIONE*

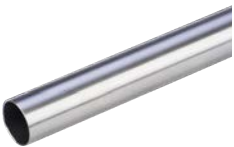
3= (STANDARD)

5= Feeding in axis - rear part / **Alimentation dans l'axe arrière** / *Alimentazione in asse parte posteriore*

7= Short series without rear thread / **Série courte sans filetage arrière** / *Serie corta senza filetto posteriore*

**TUBES / TUYAUX / TUBI**

Stainless steel AISI 304 profile tube (length 3 mt)  
**Tube profilé acier inoxydable 304 (barres de 3 mt)**  
*Tubo profilato acciaio inox 304 (barre lunghe 3 mt)*



Ø	CODE
08	TU44637
10	TU43574
12	TU43575
16	TU43576
20	TU43577
25	TU43578

**RODS / TIGES / STELI**

Stainless steel AISI 303 chromed bars (length 3 mt)  
**Barres acier inoxydable 303 chromé (barres de 3 mt)**  
*Barre acciaio inox 303 cromato (barre lunghe 3 mt)*



ØCYL.	ØROD	CODE
08-10	4mm	AI44622
12-16	6mm	AI44623
20	8mm	AI43450
25	10mm	AI43451



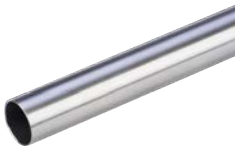
ASSEMBLING KIT / KIT DE MONTAGE / KIT DI MONTAGGIO

K X 0 0 1 0 0

- Ø cylinder / Ø vérin / Ø cilindro (16 - 20 - 25 mm)
- SEALS / JOINTS / GUARNIZIONI
  - 1= (STANDARD) (-20°C / +80°C)
  - 3= High temperature / **Haute température** / Alta temperatura (-10°C / +150°C)
  - 4= Viton on the rod only / **Viton sur la tige uniquement** / Viton solo sullo stelo
  - 8= Low temperature / **Basse température** / Bassa temperatura (-40°C / +80°C)
- VERSION / VERSION / VERSIONE
  - 01=Double acting magnetic / **Double effet magnétique** / Doppio effetto magnetico (STANDARD)
  - 03=Double acting through rod magnetic / **Double effet tige traversante magnétique** / Doppio effetto stelo passante magnetico
  - 05=Double acting magnetic cushioned / **Double effet magnétique amorti** / Doppio effetto magnetico ammortizzato
  - 07=Double acting through rod magnetic cushioned / **Double effet tige traversante magnétique amorti** / Doppio effetto stelo passante magnetico ammortizzato

TUBES / TUYAUX / TUBI

Stainless steel AISI 304 profile tube (length 3 mt)  
**Tube profilé acier inoxydable 304 (barres de 3 mt.)**  
 Tubo profilato acciaio inox 304 (barre lunghe 3 mt)



Ø	CODE
16	TU43576
20	TU43577
25	TU43578

RODS / TIGES / STELI

Stainless steel AISI 316 chromed bars (length 3 mt)  
**Barres acier inoxydable 316 chromé (barres de 3 mt)**  
 Barre acciaio inox 316 cromato (barre lunghe 3 mt)

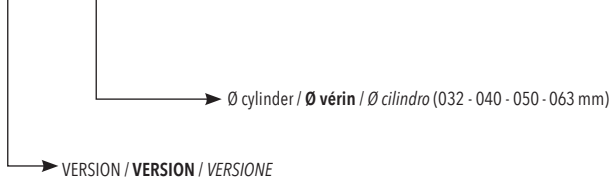


ØCYL.	ØROD	CODE
16	6mm	AI46801
20	8mm	AI46093
25	10mm	AI46094



ASSEMBLING KIT / KIT DE MONTAGE / KIT DI MONTAGGIO

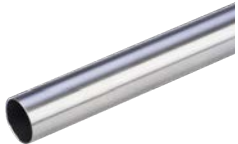
K T 0 0 1 0 0 0



- 01=Double acting magnetic / **Double effet magnétique** / Doppio effetto magnetico (STANDARD)
- 02= Double acting not magnetic / **Double effet non magnétique** / Doppio effetto non magnetico
- 03= Double acting through rod magnetic / **Double effet tige traversante magnétique** / Doppio effetto stelo passante magnetico
- 04= Double acting through rod not magnetic / **Double effet tige traversante non magnétique** / Doppio effetto stelo passante non magnetico
- 05= Double acting with cushioned magnetic / **Double effet amorti magnétique** / Doppio effetto con ammortizzo magnetico
- 06= Double acting with cushioned not magnetic / **Double effet amorti non magnétique** / Doppio effetto con ammortizzo non magnetico
- 07= Double acting through rod magnetic / **Double effet tige traversante amorti magnétique** / Doppio effetto stelo passante con ammortizzo magnetico
- 08= Double acting through rod not magnetic / **Double effet tige traversante amorti non magnétique** / Doppio effetto stelo passante con amm. non mag.
- 09= Single acting front spring magnetic / **Simple effet tige rentrée magnétique** / Semplice effetto molla anteriore magnetico
- 10= Single acting front spring not magnetic / **Simple effet tige rentrée non magnétique** / Semplice effetto molla anteriore non magnetico
- 11= Single acting rear spring magnetic / **Simple effet tige sortie magnétique** / Semplice effetto molla posteriore magnetico
- 12= Single acting rear spring not magnetic / **Simple effet tige sortie non magnétique** / Semplice effetto molla posteriore non magnetico

TUBES / TUYAUX / TUBI

Stainless steel AISI 304 profile tube (length 3 mt)  
**Tube profilé acier inoxydable 304 (barres de 3 mt.)**  
Tubo profilato acciaio inox 304 (barre lunghe 3 mt)



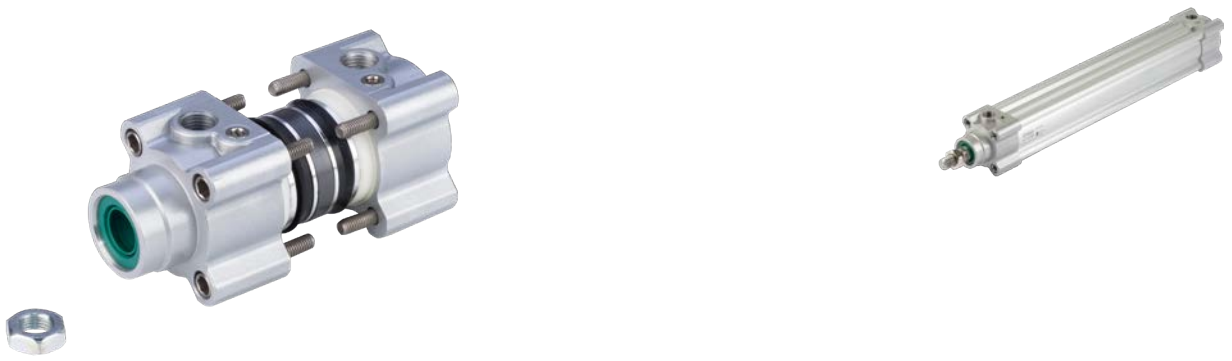
Ø	CODE
32	TU43739
40	TU43740
50	TU43741
63	TU43742

RODS / TIGES / STELI

Stainless steel AISI 303 chromed bars (length 3 mt)  
**Barres acier inoxydable 303 chromé (barres de 3 mt)**  
Barre acciaio inox 303 cromato (barre lunghe 3 mt)



ØCYL.	ØROD	CODE
32	12mm	AI42023
40	16mm	AI42024
50-63	20mm	AI42025



ASSEMBLING KIT / KIT DE MONTAGE / KIT DI MONTAGGIO

K L 0 0 1 0 0 0

Ø cylinder / Ø vérin / Ø cilindro (032 - 040 - 050 - 063 - 080 - 100 mm)

SEALS / JOINTS / GUARNIZIONI

VERSION / VERSION / VERSIONE

- 01** (STANDARD) Double acting magnetic cushioned  
**Double effet magnétique amorti**  
*Doppio effetto magnetico ammortizzato*
- 03** Through rod magnetic cushioned  
**Tige traversante magnétique amorti**  
*Stelo passante magnetico ammortizzato*

<b>1</b>	<b>STANDARD</b>	Polyurethane / <b>Polyuréthane</b> / Poliuretano (-20°C +80°C)
<b>3</b>	High temperature <b>Haute température</b> Alta temperatura	Viton / <b>Viton</b> / Viton (-10°C +150°C)
<b>4</b>	Heavy use <b>Utilisation lourde</b> Uso pesante	Polyurethane / <b>Polyuréthane</b> / Poliuretano (-20°C +80°C)
<b>6</b>	High temperature <b>Haute température</b> Alta temperatura	Viton on the rod / <b>Viton sur la tige</b> / Viton sullo stelo (-10°C +150°C)

TUBES / TUYAUX / TUBI

CF series profile tube (length 3 mt)  
**Tube profilé série CF (barres de 3 mt.)**  
 Tubo profilato serie CF (barre lunghe 3 mt)



Ø	CODE
32	CC43665
40	CC43666
50	CC43667
63	CC43668
80	CC43669
100	CC43670

RODS / TIGES / STELLI

C45 chromed steel bars (length 3 mt)  
**Barres en acier chromé C45 (barres de 3 mt)**  
 Barre acciaio cromato C45 (barre lunghe 3 mt)



ØCYL.	ØROD	CODE
32	12mm	AC40111
40	16mm	AC40107
50-63	20mm	AC40080
80-100	25mm	AC40224

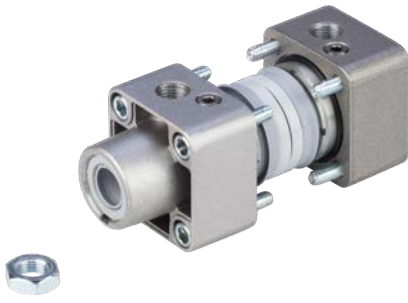
Stainless steel AISI 304 chromed bars (length 3 mt)  
**Barres acier inoxydable 304 chromé (barres de 3 mt)**  
 Barre acciaio inox 304 cromato (barre lunghe 3 mt)

ØCYL.	ØROD	CODE
32	12mm	AI43437
40	16mm	AI42024
50-63	20mm	AI43438
80-100	25mm	AI42026

STANDARD SEALS KIT / KIT JOINTS STANDARD  
 KIT GUARNIZIONI STANDARD



Ø	CODE
32	KZ831032
40	KZ831040
50	KZ831050
63	KZ831063
80	KZ831080
100	KZ831100



**ASSEMBLING KIT / KIT DE MONTAGE / KIT DI MONTAGGIO**

**K Y 0 0 1 0 0 0**

→ Ø cylinder / Ø vérin / Ø cilindro (032 - 040 - 050 - 063 - 080 - 100 - 125 mm)

**SEALS / JOINTS / GUARNIZIONI**

**VERSION / VERSION / VERSIONE**

- 01** (STANDARD) Double acting magnetic cushioned  
**Double effet magnétique amorti**  
*Doppio effetto magnetico ammortizzato*
- 03** Through rod magnetic cushioned  
**Tige traversante magnétique amorti**  
*Stelo passante magnetico ammortizzato*

<b>1</b>	<b>STANDARD</b>	Polyurethane / <b>Polyuréthane</b> / Poliuretano (-20°C +80°C)
<b>3</b>	High temperature <b>Haute température</b> Alta temperatura	Viton / <b>Viton</b> / Viton (-10°C +150°C)
<b>4</b>	Heavy use <b>Utilisation lourde</b> Uso pesante	Polyurethane / <b>Polyuréthane</b> / Poliuretano (-20°C +80°C)
<b>6</b>	High temperature <b>Haute température</b> Alta temperatura	Viton on the rod / <b>Viton sur la tige</b> / Viton sullo stelo (-10°C +150°C)

**TUBES / TUYAUX / TUBI**

CZ series profile tube (length 3 mt)  
**Tube profilé série CZ (barres de 3 mt.)**  
*Tubo profilato serie CZ (barre lunghe 3 mt)*



Ø	CODE
32	CC43665
40	CC43666
50	CC43667
63	CC43668
80	CC43669
100	CC43670
125	CC43671

CY series profile tube (length 3 mt)  
**Tube profilé série CY (barres de 3 mt.)**  
*Tubo profilato serie CY (barre lunghe 3 mt)*



Ø	CODE
32	CC41676
40	CC41677
50	CC41678
63	CC41679
80	CC41680
100	CC41681
125	CC41682

**RODS / TIGES / STELI**

C45 chromed steel bars (length 3 mt)  
**Barres en acier chromé C45 (barres de 3 mt)**  
*Barre acciaio cromato C45 (barre lunghe 3 mt)*



ØCYL.	ØROD	CODE
32	12mm	AC40111
40	16mm	AC40107
50-63	20mm	AC40080
80-100	25mm	AC40224
125	32mm	AC40225

Stainless steel AISI 304 chromed bars (length 3 mt)  
**Barres acier inoxydable 304 chromé (barres de 3 mt)**  
*Barre acciaio inox 304 cromato (barre lunghe 3 mt)*

ØCYL.	ØROD	CODE
32	12mm	AI43437
40	16mm	AI42024
50-63	20mm	AI43438
80-100	25mm	AI42026
125	32mm	AI43628

**SEALS KIT / KIT JOINTS / KIT GUARNIZIONI**



Ø	CODE
32	KZ011032
40	KZ011040
50	KZ011050
63	KZ011063
80	KZ011080
100	KZ011100
125	KZ011125





ASSEMBLING KIT / KIT DE MONTAGE / KIT DI MONTAGGIO

K Q 0 0 1 0 0 0

Ø cylinder / Ø vérin / Ø cilindro (160 - 200 - 250 mm)

VERSION / VERSION / VERSIONE

- 01** (STANDARD) Double acting cushioned magnetic  
**Double effet amorti magnétique**  
*Doppio effetto ammortizzato magnetico*
- 02** Double acting cushioned not magnetic  
**Double effet amorti non magnétique**  
*Doppio effetto ammortizzato non magnetico*
- 03** Through rod magnetic  
**Tige traversante magnétique**  
*Stelo passante magnetico*
- 04** Through rod not magnetic  
**Tige traversante non magnétique**  
*Stelo passante non magnetico*

SEALS / JOINTS / GUARNIZIONI

<b>1</b>	<b>STANDARD</b>	Polyurethane / <b>Polyuréthane</b> / Poliuretano (-20°C +80°C)
<b>3</b>	High temperature <b>Haute température</b> Alta temperatura	Viton / <b>Viton</b> / Viton (-10°C +150°C)
<b>4</b>	Heavy use <b>Utilisation lourde</b> Uso pesante	Polyurethane / <b>Polyuréthane</b> / Poliuretano (-20°C +80°C)
<b>6</b>	High temperature <b>Haute température</b> Alta temperatura	Viton on the rod / <b>Viton sur la tige</b> / Viton sullo stelo (-10°C +150°C)

TUBES / TUYAUX / TUBI

CF series profile tube (length 3 mt)  
**Tube profilé série CF (barres de 3 mt.)**  
 Tubo profilato serie CF (barre lunghe 3 mt)



Ø	CODE
<b>160</b>	TU42999
<b>200</b>	TU43000
<b>250</b>	TU43001

RODS / TIGES / STELI

C45 chromed steel bars (length 3 mt)  
**Barres en acier chromé C45 (barres de 3 mt)**  
 Barre acciaio cromato C45 (barre lunghe 3 mt)



ØCYL.	ØROD	CODE
<b>160-200</b>	<b>40mm</b>	AC42792
<b>250</b>	<b>50mm</b>	AC42793

Stainless steel AISI 304 chromed bars (length 3 mt)  
**Barres acier inoxydable 304 chromé (barres de 3 mt)**  
 Barre acciaio inox 304 cromato (barre lunghe 3 mt)

ØCYL.	ØROD	CODE
<b>160-200</b>	<b>40mm</b>	AI43583
<b>250</b>	<b>50mm</b>	AI47050

SEALS KIT / KIT JOINTS / KIT GUARNIZIONI



Ø	CODE
<b>32</b>	KZ201160
<b>40</b>	KZ201200
<b>50</b>	KZ201250



**ASSEMBLING KIT / KIT DE MONTAGE / KIT DI MONTAGGIO**

**K K 0 0 1 0 0 0**

→ Ø cylinder / Ø vérin / Ø cilindro (016 - 020 - 025 - 032 - 040 - 050 - 063 - 080 - 100 mm)

**VERSION / VERSION / VERSIONE**

- 01** (STANDARD) Double acting magnetic  
**Double effet magnétique**  
*Doppio effetto magnetico*  
 Double acting magnetic through rod
- 03** Double effect tige traversante magnétique  
**Double effet magnétique stelo passante**  
*Doppio effetto magnetico stelo passante*
- 29** Double acting magnetic non rotating device  
**Double effet magnétique anti-rotation**  
*Doppio effetto magnetico anti-rotazione*

**SEALS / JOINTS / GUARNIZIONI**

<b>1</b>	<b>STANDARD</b>	Polyurethane / <b>Polyuréthane</b> / Poliuretano (-20°C +80°C)
<b>3</b>	High temperature <b>Haute température</b> Alta temperatura	Polyurethane / <b>Polyuréthane</b> / Poliuretano (-25°C +130°C)
<b>8</b>	Low temperature <b>Basse température</b> Bassa temperatura	Polyurethane / <b>Polyuréthane</b> / Poliuretano (-40°C +80°C)

**TUBES / TUYAUX / TUBI**

Profile tube (length 2 mt)  
**Tube profilé (barres de 2 mt.)**  
 Tubo profilato (barre lunghe 2 mt)



Ø	CODE (Mt)
16	TU43899
20	TU43900
25	TU43901
32	TU43902
40	TU43903
50	TU43904
63	TU43905
80	TU43906
100	TU43907

**RODS / TIGES / STELLI**

C45 chromed steel bars (length 3 mt)  
**Barres en acier chromé C45 (barres de 3 mt)**  
 Barre acciaio cromato C45 (barre lunghe 3 mt)



ØCYL.	ØROD	CODE
16	8mm	AC40363
20-25	10mm	AC40269
32-40	12mm	AC40111
50-63	16mm	AC40107
80-100	20mm	AC40080

Stainless steel AISI 304 chromed bars (length 3 mt)  
**Barres acier inoxydable 304 chromé (barres de 3 mt)**  
 Barre acciaio inox 304 cromato (barre lunghe 3 mt)

ØCYL.	ØROD	CODE
16	8mm	AI43450
20-25	10mm	AI43956
32-40	12mm	AI43437
50-63	16mm	AI42024
80-100	20mm	AI43438

**SEALS KIT / KIT JOINTS / KIT GUARNIZIONI**



Ø	CODE
16	KZ331016
20	KZ331020
25	KZ331025
32	KZ331032
40	KZ331040
50	KZ331050
63	KZ331063
80	KZ331080
100	KZ331100



**ASSEMBLING KIT / KIT DE MONTAGE / KIT DI MONTAGGIO**

**KG 2 0 0 4 0 0 0**

- Ø cylinder / Ø vérin / Ø cilindro (016 - 020 - 025 - 032 - 040 - 050 - 063 - 080 - 100 mm)
- 4= H type with slide bearings / **Guidage en H avec bague en bronze** / Tipo H con bussole in bronzo  
 5= H type with ball bushings / **Guidage en H avec roulement à billes** / Tipo H con manicotti a ricircolo di sfere  
 8= U type with slide bearings / **Guidage en U avec bague en bronze** / Tipo U con bussole in bronzo
- 0= Long coupling / **Couple long** / Giunto lungo  
 1= Short coupling / **Couple court** / Giunto corto

**RODS / TIGES / STELI**



C45 chromed steel bars (length 3 mt)  
**Barres en acier chromé C45 (barres de 3 mt)**  
 Barre acciaio cromato C45 (barre lunghe 3 mt)

ØCYL.	ØROD	CODE
16	10mm	AC40269
20-25-32	12mm	AC40111
40	16mm	AC40107
50-63	20mm	AC40080
80-100	25mm	AC40224

Hardened and chromed steel bars (length 3 mt)  
**Barres en acier trempé et chromé (barres de 3 mt)**  
 Barre acciaio temprato e cromato (barre lunghe 3 mt)

ØCYL.	ØROD	CODE
16	8mm	AT42021
20-25	10mm	AT42022
32	12mm	AT40217
40	16mm	AT40219
50-63	20mm	AT40221
80-100	25mm	AT40417

GREASE  
**GRAISSE**  
 GRASSO



CODE

GRA002	5 kg
GRA004	0,5 kg

THREADLOCKER  
**FREIN-FILET**  
 FRENA-FILETTI



CODE

COL001	250 ml
--------	--------

CRIMPING TOOL  
**OUTIL DE SERTISSAGE**  
 ATTREZZO PER CIANFRINARE



CODE

AT-0015
---------

Crimping tool for pneumatic cylinders MC, MX and CT series.  
**Outil de sertissage pour vérins pneumatiques séries MC, MX et CT.**  
 Utensile di cianfrinatura per cilindri pneumatici serie MC, MX e CT.

TOOL KIT FOR SEALS  
**TROUSSE D'OUTILS POUR JOINTS**  
 KIT ATTREZZI PER GUARNIZIONI



CODE

AT-0130
---------

**Airwork Pneumatic Equipment srl**

Via Piemonte, 3/5

20841 - Carate Brianza (MB) - Italia

Tel. +39 0362 645951

Fax: +39 0362 645979

e-mail: [info@airwork.it](mailto:info@airwork.it)

[WWW.AIRWORK.IT](http://WWW.AIRWORK.IT)

