



The pressure switch allows to change the signal from pneumatic into electric.

**Le pressostat il permet de transformer un signal pneumatique en un signal électrique.**

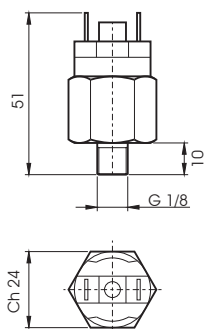
*Il pressostato permette di trasformare un segnale pneumatico in un segnale elettrico.*

**TECHNICAL DATA / DONNÉES TECHNIQUES / DATI TECNICI**

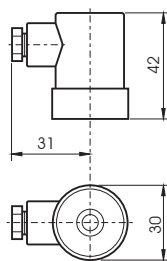
Fluid / <b>Fluide</b> / <i>Fluido</i>	Lubricated or non lubricated air / <b>Air lubrifié ou non</b> / <i>Aria con o senza lubrificazione</i>
Temperature range / <b>Température d'utilisation</b> / <i>Temperatura di esercizio</i>	-10° C / +60° C
Setting range / <b>Plage de tarage</b> / <i>Campo di taratura</i>	1 - 10ba
Tolerance at 20 C° / <b>Tolérance à 20 C°</b> / <i>Tolleranza a 20 C°</i>	0,5bar
Max tension / <b>Tension max</b> / <i>Tensione massima</i>	48V AC

**MATERIALS / MATIERES / MATERIALI**

Body / <b>Corps</b> / <i>Corpo</i>	Brass / <b>Laiton</b> / <i>Ottone</i>
Diaphragm / <b>Membrane</b> / <i>Membrana</i>	Rubber / <b>Caoutchouc</b> / <i>Gomma</i>
Electrical contacts / <b>Contacts</b> / <i>Contatti</i>	Silver plated / <b>Argent</b> / <i>Argentati</i>

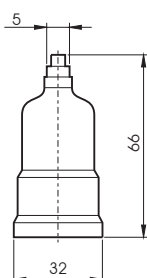


<b>CODE</b>	
<b>PR211</b>	NC / NF / NC
<b>PR212</b>	NO / NO / NA



CAP 90°  
**CAPOT 90°**  
CAPPUCCIO 90°

<b>CODE</b>	
<b>TX0017</b>	



IN LINE CAP  
**CAPOT EN LIGNE**  
CAPPUCCIO IN LINEA

<b>CODE</b>	
<b>TX0018</b>	