



The flow regulator has the function to regulate the speed of the pneumatic cylinders and they can be:
uni-directional: the regulation is in one way
bi-directional: the regulation is in two ways.
There are models suitable for mounting on cylinders or on valves, and the adjustment can be done manually or with a screwdriver.

Le régulateur de débit a la fonction de régulation de la vitesse pour les vérins pneumatiques et il peut être :

Unidirectionnel : la régulation est dans un seul sens

Bidirectionnel : la régulation va dans les deux sens

Il peut s'adapter sur les vérins ainsi que sur les valves et peut être soit réglé manuellement ou soit avec une clé.

Il regolatore di flusso ha la funzione di regolare la velocità di spostamento dei cilindri pneumatici e possono essere di due tipi:

Unidirezionali: significa che la regolazione del flusso dell'aria avviene solo in un senso.

Bidirezionale: la regolazione avviene nei due sensi.

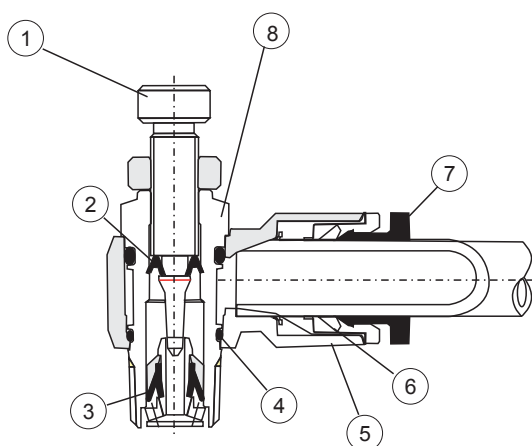
Vi sono modelli adatti al montaggio su cilindri o sulle valvole, e la regolazione può essere fatta manualmente o con cacciavite.

TECHNICAL DATA / DONNÉES TECHNIQUES / DATI TECNICI

Type / Type / Tipo	SERIE NSC	SERIE A
Fluid / Fluide / Fluido	Air / Air / Aria	Air / Air / Aria
Temperature range / Température d'utilisation / Temperatura di esercizio	0°C +60°C	-10°C +80°C
Pressure / Pression / Pressione	max. 10 bar	
Recommended tubes / Tubes recommandés / Tubi raccomandati	Polyamide (PA) / Polyurethane (PU) / Polyethylene (PE)	

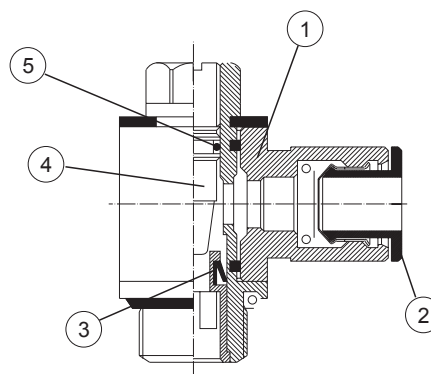
COMPONENTS / COMPOSANTS / COMPONENTI

SERIE NSC



N.	DESCRIPTION / DESCRIPTION / DESCRIZIONE	MATERIAL / MATIÈRE / MATERIALE
1	needle / molette / ghiera	brass / laiton / ottone
2	seal / joints / guarnizione	NBR
3	seal / joints / guarnizione	NBR
4	o-ring / torique	NBR
5	body / corps / corpo	PBT
6	lock claw / pinces / pinza	SUS 304
7	ring / torique / anello	POM
8	body / corps / corpo	brass / laiton / ottone

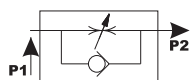
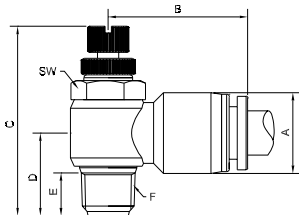
SERIE A



N.	DESCRIPTION / DESCRIPTION / DESCRIZIONE	MATERIAL / MATIÈRE / MATERIALE
1	body / corps / corpo	brass / laiton / ottone
2	ring / torique / anello	brass / laiton / ottone
3	seal / joints / guarnizione	NBR
4	screw / vis / vite	brass / laiton / ottone
5	o-ring / torique	NBR

NSC-C

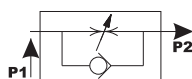
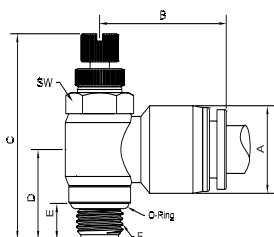
FLOW REGULATOR FOR CYLINDERS TAPER / RÉGULATEUR DE DÉBIT CONIQUE POUR VERIN
REGOLATORE DI FLUSSO CONICO PER CILINDRI



CODE	tube Ø	A	B	C max	C min	E	F	SW	min.pcs.
NSC-C 0401N	4	11	23	43	38.9	7.8	R1/8	12	10
NSC-C 0402N	4	11	24.6	46	39.9	10.5	R1/4	12	10
NSC-C 0601N	6	13	24.5	43	38.9	7.8	R1/8	12	10
NSC-C 0602N	6	13	26.2	46	39.9	10.8	R1/4	12	10
NSC-C 0603N	6	13	28.6	52	44.5	11.7	R3/8	19	10
NSC-C 0801N	8	14.6	25.8	43	38.9	7.8	R1/8	12	10
NSC-C 0802N	8	14.6	27.5	46	39.9	10.8	R1/4	12	10
NSC-C 0803N	8	14.6	30.2	52	44.5	11.7	R3/8	19	10
NSC-C 0804N	8	21	36.5	59.9	50.5	15.7	R1/2	24	10
NSC-C 1002N	10	17.6	29.2	6	38.9	10.8	R1/4	12	10
NSC-C 1003N	10	17.6	30.7	52	44.5	11.7	R3/8	19	10
NSC-C 1004N	10	21	36.5	59.9	50.5	15.7	R1/2	24	10
NSC-C 1202N	12	21	33.6	46	39.9	10.8	R1/4	12	10
NSC-C 1203N	12	21	34.5	52	44.5	11.7	R3/8	19	10
NSC-C 1204N	12	21	36.5	59.9	50.9	15.7	R1/2	24	10

NSC-GC

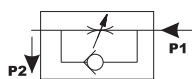
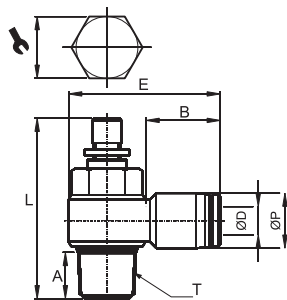
FLOW REGULATOR FOR CYLINDERS PARALLEL / RÉGULATEUR DE DÉBIT CYLINDRIQUE POUR VERIN
REGOLATORE DI FLUSSO CILINDRICO PER CILINDRI



CODE	tube Ø	A	B	C max	C min	E	F	SW	min.pcs.
NSC-GC 04M5N	4	11	27.1	30.5	27.6	3.5	M5	8	10
NSC-GC 0401N	4	11	23	41.2	37.1	6	G1/8	12	10
NSC-GC 0402N	4	11	24.6	42.4	36.3	7.2	G1/4	12	10
NSC-GC 06M5N	6	13	24.5	30.5	27.6	3.5	M5	8	10
NSC-GC 0601N	6	13	24.5	41.2	37.1	6	G1/8	12	10
NSC-GC 0602N	6	13	26.2	42.4	36.3	7.2	G1/4	12	10
NSC-GC 0603N	6	13	28.6	48.7	41.2	8.4	G3/8	19	10
NSC-GC 0801N	8	14.6	25.8	41.2	37.1	6	G1/8	12	10
NSC-GC 0802N	8	14.6	27.5	42.4	36.3	7.2	G1/4	12	10
NSC-GC 0803N	8	14.6	30.2	48.7	41.2	8.4	G3/8	19	10
NSC-GC 0804N	8	21	36.5	55.9	46.5	11.7	G1/2	24	10
NSC-GC 1002N	10	17.6	29.2	42.4	36.3	7.2	G1/4	12	10
NSC-GC 1003N	10	17.6	30.7	48.7	41.2	8.4	G3/8	19	10
NSC-GC 1004N	10	21	36.5	55.9	46.5	11.7	G1/2	24	10
NSC-GC 1202N	12	21	33.6	42.4	36.3	7.2	G1/4	12	10
NSC-GC 1203N	12	21	34.5	48.7	41.2	8.4	G3/8	19	10
NSC-GC 1204N	12	21	36.5	55.9	46.5	11.7	G1/2	24	10

NSC-V

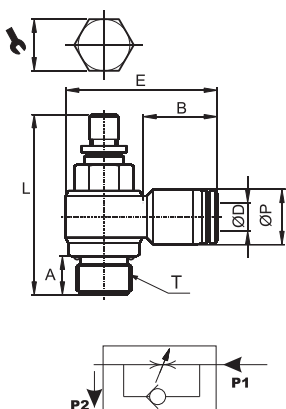
FLOW REGULATOR FOR VALVES TAPER / RÉGULATEUR DE DÉBIT CONIQUE POUR VALVE
REGOLATORE DI FLUSSO CONICO PER VALVOLE



CODE	ØD	T	ØP	L(max)	E	A	B	↘	min.pcs.
NSC-V 0401R	4	R1/8	10,5	40,1	30,5	8	16,3	11	10
NSC-V 0402R	4	R1/4	10,5	45,7	34,5	10	16,3	15	10
NSC-V 0601R	6	R1/8	12,5	40,1	31,2	8	17,6	11	10
NSC-V 0602R	6	R1/4	12,5	45,7	35,0	10	17,6	15	10
NSC-V 0603R	6	R3/8	12,5	55,0	38,7	11	17,6	19	10
NSC-V 0801R	8	R1/8	14,5	40,1	33,0	8	18,7	11	10
NSC-V 0802R	8	R1/4	14,5	45,7	36,8	10	18,7	15	10
NSC-V 0803R	8	R3/8	14,5	55,0	40,1	11	18,7	19	10
NSC-V 0804R	8	R1/2	14,5	60,2	45,8	14	18,7	24	10
NSC-V 1002R	10	R1/4	17,5	45,7	38,8	10	19,6	15	10
NSC-V 1003R	10	R3/8	17,5	55,0	42,2	11	19,6	19	10
NSC-V 1004R	10	R1/2	17,5	60,2	47,5	14	19,6	24	10
NSC-V 1202R	12	R1/4	20,5	45,7	40,8	10	21,9	15	10
NSC-V 1203R	12	R3/8	20,5	55,0	45,9	11	21,9	19	10
NSC-V 1204R	12	R1/2	20,5	60,2	50,1	14	21,9	24	10

NSC-GV

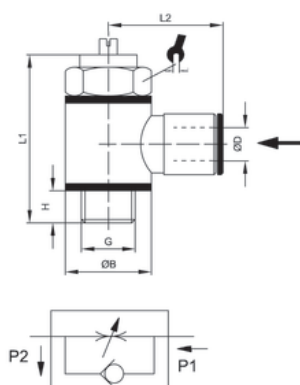
FLOW REGULATOR FOR VALVES PARALLEL / RÉGULATEUR DE DÉBIT CYLINDRIQUE POUR VALVE
REGOLATORE DI FLUSSO CILINDRICO PER VALVOLE



CODE	ØD	T	ØP	L(MAX)	E	A	B	↘	min.pcs.
NSC-GV 04M5R	4	M5	10,5	30,2	25,1	3,6	16,3	8	10
NSC-GV 0401R	4	G1/8	10,5	40,1	30,5	6,0	16,3	8	10
NSC-GV 0402R	4	G1/4	10,5	45,7	34,5	8,0	16,3	12	10
NSC-GV 06M5R	6	M5	12,2	30,2	27,8	3,6	17,6	8	10
NSC-GV 0601R	6	G1/8	12,5	40,1	31,2	6,0	17,6	8	10
NSC-GV 0602R	6	G1/4	12,5	45,7	35,0	8,0	17,6	12	10
NSC-GV 0603R	6	G3/8	12,5	55,0	38,7	8,0	17,6	14	10
NSC-GV 0801R	8	G1/8	14,5	40,1	33,0	6,0	18,7	8	10
NSC-GV 0802R	8	G1/4	14,5	45,7	36,8	8,0	18,7	12	10
NSC-GV 0803R	8	G3/8	14,5	55,0	40,1	8,0	18,7	14	10
NSC-GV 0804R	8	G1/2	14,5	60,2	45,8	9,0	18,7	19	10
NSC-GV 1002R	10	G1/4	17,5	45,7	38,8	8,0	19,6	12	10
NSC-GV 1003R	10	G3/8	17,5	55,0	42,2	8,0	19,6	14	10
NSC-GV 1004R	10	G1/2	17,5	60,2	47,5	9,0	19,6	19	10
NSC-GV 1202R	12	G1/4	20,5	45,7	40,8	8,0	21,6	12	10
NSC-GV 1203R	12	G3/8	20,5	55,0	45,9	8,0	21,6	14	10
NSC-GV 1204R	12	G1/2	20,5	60,2	50,1	9,0	21,6	19	10

A131

FLOW REGULATOR FOR VALVES PARALLEL / RÉGULATEUR DE DÉBIT CYLINDRIQUE POUR VALVE
REGOLATORE DI FLUSSO CILINDRICO PER VALVOLE

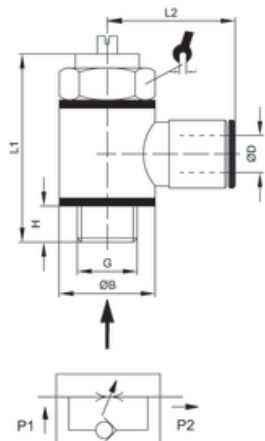


CODE	ØD	G	H	ØB	L1	L2	NI/min*	↘	min.pcs.
A131 4-M5	4	M5	4	SW9	25	18	45	8	10
A131 4-1/8	4	G1/8	5	14	32	20,5	310	14	10
A131 5-1/8	5	G1/8	5	14	32	22,5	310	14	10
A131 6-M5	6	M5	4	SW9	25	19,5	45	8	10
A131 6-1/8	6	G1/8	5	14	32	23	390	14	10
A131 6-1/4	6	G1/4	6	18	37	24	710	17	10
A131 8-1/8	8	G1/8	5	14	32	24,5	390	14	10
A131 8-1/4	8	G1/4	6	18	37	26	810	17	10
A131 8-3/8	8	G3/8	6,5	21	46,5	27	1050	20	10
A131 10-1/4	10	G1/4	6	18	37	27	810	17	10
A131 10-3/8	10	G3/8	6,5	21	46,5	28	1050	20	10
A131 12-1/4	12	G1/4	6	18	37	28	810	17	10
A131 12-3/8	12	G3/8	6,5	21	46,5	29	1050	20	10

*nominal flow rate at 6 Bar - *Débit nominal à 6 Bar - *portata nominale a 6 Bar

A132

FLOW REGULATOR FOR CYLINDER PARALLEL / RÉGULATEUR DE DÉBIT CYLINDRIQUE POUR VERIN
REGOLATORE DI FLUSSO CILINDRICO PER CILINDRI

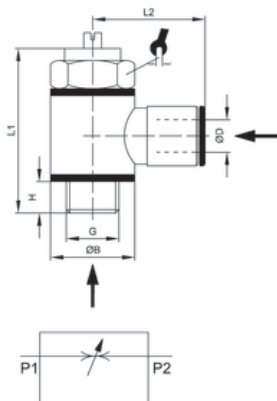


CODE	ØD	G	H	ØB	L1	L2	NI/min*	↘	min.pcs.
A132 4-M5	4	M5	4	SW9	25	18	45	8	10
A132 4-1/8	4	G1/8	5	14	32	20,5	310	14	10
A132 5-1/8	5	G1/8	5	14	32	22,5	310	14	10
A132 6-M5	6	M5	4	SW9	25	19,5	45	8	10
A132 6-1/8	6	G1/8	5	14	32	23	390	14	10
A132 6-1/4	6	G1/4	6	18	37	24	710	17	10
A132 8-1/8	8	G1/8	5	14	32	24,5	390	14	10
A132 8-1/4	8	G1/4	6	18	37	26	710	17	10
A132 8-3/8	8	G3/8	6,5	21	46,5	27	1050	20	10
A132 10-1/4	10	G1/4	6	18	37	27	810	17	10
A132 10-3/8	10	G3/8	6,5	21	46,5	28	1050	20	10
A132 12-1/4	12	G1/4	6	18	37	28	810	17	10
A132 12-3/8	12	G3/8	6,5	21	46,5	29	1050	20	10

*nominal flow rate at 6 Bar - *Débit nominal à 6 Bar - *portata nominale a 6 Bar

A133

BIDIRECTIONAL PARALLEL FLOW REGULATOR / **RÉGULATEUR DE DÉBIT CYLINDRIQUE BIDIRECTIONNEL**
REGOLATORE DI FLUSSO CILINDRICO BIDIREZIONALE

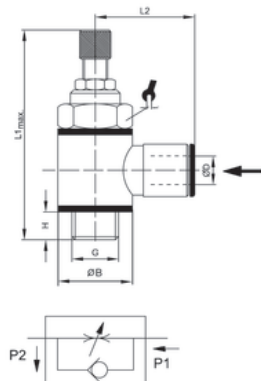


CODE	ØD	G	H	ØB	L1	L2	NI/min*		min.pcs.
A133 4-M5	4	M5	4	SW9	25	18	45	8	10
A133 4-1/8	4	G1/8	5	14	32	20,5	310	14	10
A133 5-1/8	5	G1/8	5	14	32	22,5	310	14	10
A133 6-M5	6	M5	4	SW9	25	19,5	45	8	10
A133 6-1/8	6	G1/8	5	14	32	23	390	14	10
A133 6-1/4	6	G1/4	6	18	37	24	710	17	10
A133 8-1/8	8	G1/8	5	14	32	24,5	390	14	10
A133 8-1/4	8	G1/4	6	18	37	26	810	17	10
A133 8-3/8	8	G3/8	6,5	21	46,5	27	1050	20	10
A133 10-1/4	10	G1/4	6	18	37	27	810	17	10

*nominal flow rate at 6 Bar - *Débit nominal à 6 Bar - *portata nominale a 6 Bar

A129

MANUAL FLOW REGULATOR PARALLEL FOR VALVES / **RÉGULATEUR DE DÉBIT CYLINDRIQUE POUR VALVE REGLAGE MANUEL**
REGOLATORE DI FLUSSO CILINDRICO MANUALE PER VALVOLE

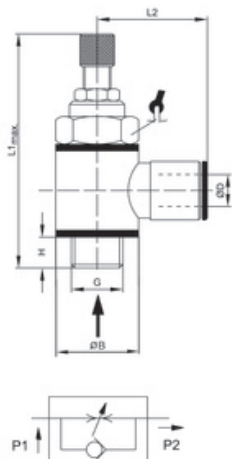


CODE	ØD	G	H	ØB	L1	L2	NI/min*		min.pcs.
A129 4-1/8	4	G1/8	5	14	49	20,5	310	14	10
A129 6-1/8	6	G1/8	5	14	49	23	390	14	10
A129 8-1/8	8	G1/8	6	18	56,5	24	390	14	10
A129 6-1/4	6	G1/4	5	14	49	24,5	710	17	10
A129 8-1/4	8	G1/4	6	18	56,5	26	810	17	10
A129 10-1/4	10	G1/4	6	18	56,5	27	810	17	10
A129 12-1/4	12	G1/4	6	18	56,5	28	810	17	10

*nominal flow rate at 6 Bar - *Débit nominal à 6 Bar - *portata nominale a 6 Bar

A130

MANUAL FLOW REGULATOR PARALLEL FOR CYLINDER / **RÉGULATEUR DE DÉBIT CYLINDRIQUE POUR VERIN REGLAGE MANUEL**
REGOLATORE DI FLUSSO CILINDRICO MANUALE PER CILINDRI

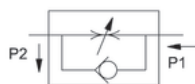
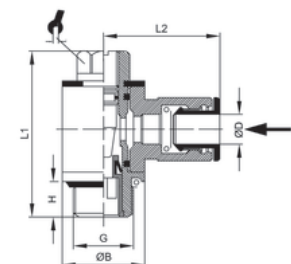


CODE	ØD	G	H	ØB	L1	L2	NI/min*		min.pcs.
A130 4-1/8	4	G1/8	5	14	49	20,5	340	14	10
A130 6-1/8	6	G1/8	5	14	49	23	340	14	10
A130 6-1/4	6	G1/4	6	18	56,5	24	580	17	10
A130 8-1/8	8	G1/8	5	14	49	24,5	340	14	10
A130 8-1/4	8	G1/4	6	18	56,5	26	580	17	10
A130 8-3/8	8	G3/8	7,5	21	63	27,5	720	20	10
A130 10-1/4	10	G1/4	6	18	56,5	27	580	17	10
A130 10-3/8	10	G3/8	7	21	63	29	720	20	10
A130 12-1/4	12	G1/4	6	18	56,5	28	580	17	10

*nominal flow rate at 6 Bar - *Débit nominal à 6 Bar - *portata nominale a 6 Bar

A138

SWIVEL FLOW REGULATOR PARALLEL FOR VALVES / **RÉGULATEUR DE DEBIT TOURNANT CYLINDRIQUE POUR VALVE**
REGOLATORE DI FLUSSO CILINDRICO GIREVOLE PER VALVOLE

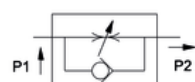
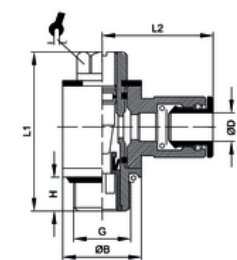


CODE	ØD	G	H	ØB	L1	L2	NL/min*	1	2	min.pcs.
A138 4-1/8	4	G1/8	6,5	14	32	20,5	310	9	10	10
A138 6-1/8	6	G1/8	6,5	14	32	23	390	9	10	10
A138 6-1/4	6	G1/4	8	18	37	24	710	12	10	10
A138 8-1/8	8	G1/8	6,5	14	32	24,5	390	9	10	10
A138 8-1/4	8	G1/4	8	18	37	26	810	12	10	10
A138 10-1/4	10	G1/4	8	18	37	27	810	12	10	10
A138 12-1/4	12	G1/4	8	18	37	28	810	12	10	10

*nominal flow rate at 6 Bar - *Débit nominal à 6 Bar - *portata nominale a 6 Bar

A139

SWIVEL FLOW REGULATOR PARALLEL FOR CYLINDER / **RÉGULATEUR DE DEBIT TOURNANT CYLINDRIQUE POUR VERIN**
REGOLATORE DI FLUSSO CILINDRICO GIREVOLE PER CILINDRI

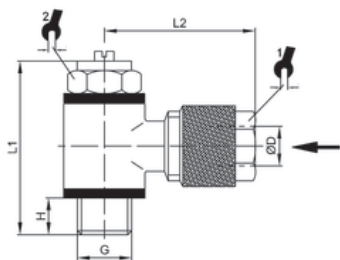


CODE	ØD	G	H	ØB	L1	L2	NL/min*	1	2	min.pcs.
A139 4-1/8	4	G1/8	6,5	14	32	20,5	310	9	10	10
A139 6-1/8	6	G1/8	6,5	14	32	23	390	9	10	10
A139 6-1/4	6	G1/4	8	18	37	24	710	12	10	10
A139 8-1/8	8	G1/8	6,5	14	32	24,5	390	9	10	10
A139 8-1/4	8	G1/4	8	18	37	26	810	12	10	10
A139 10-1/4	10	G1/4	8	18	37	27	810	12	10	10
A139 12-1/4	12	G1/4	8	18	37	28	810	12	10	10

*nominal flow rate at 6 Bar - *Débit nominal à 6 Bar - *portata nominale a 6 Bar

A156

FLOW REGULATOR PARALLEL FOR VALVES PUSH-ON / **RÉGULATEUR DE DEBIT CYLINDRIQUE POUR VALVE À COIFFE**
REGOLATORE DI FLUSSO CILINDRICO A CALZAMENTO PER VALVOLE

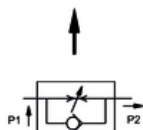
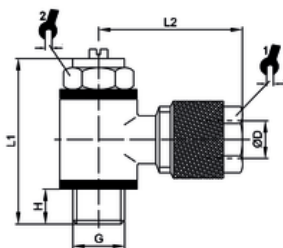


CODE	ØD	G	H	L1	L2	NI/min*	1	2	min.pcs.
A156 5/3-M5	5/3	M5	4	25	16	45	8	8	10
A156 5/3-1/8	5/3	G1/8	5	32	21	310	8	14	10
A156 6/4-M5	6/4	M5	4	25	16	45	9	8	10
A156 6/4-1/8	6/4	G1/8	5	32	21,5	310	10	14	10
A156 6/4-1/4	6/4	G1/4	6	37	24,5	420	10	17	10
A156 8/6-1/8	8/6	G1/8	5	32	20,5	310	12	14	10
A156 8/6-1/4	8/6	G1/4	6	37	22,5	420	12	17	10

*nominal flow rate at 6 Bar - *Débit nominal à 6 Bar - *portata nominale a 6 Bar

A157

FLOW REGULATOR PARALLEL FOR CYLINDER PUSH-ON / **RÉGULATEUR DE DÉBIT CYLINDRIQUE POUR VERIN À COIFFE**
REGOLATORE DI FLUSSO CILINDRICO A CALZAMENTO PER CILINDRI

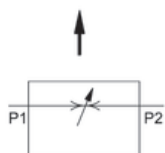
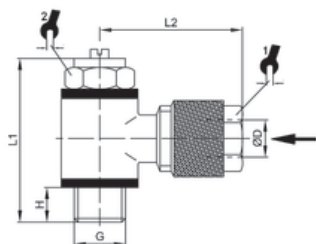


CODE	ØD	G	H	L1	L2	NI/min*	1	2	min.pcs.
A157 5/3-M5	5/3	M5	4	25	16	45	8	8	10
A157 5/3-1/8	5/3	G1/8	5	32	21	310	8	14	10
A157 6/4-M5	6/4	M5	4	25	16	45	9	8	10
A157 6/4-1/8	6/4	G1/8	5	32	21,5	310	10	14	10
A157 6/4-1/4	6/4	G1/4	6	37	24,5	420	10	17	10
A157 8/6-1/8	8/6	G1/8	5	32	20,5	310	12	14	10
A157 8/6-1/4	8/6	G1/4	6	37	22,5	420	12	17	10
A157 8/6-3/8	8/6	G3/8	6	46	24,5	500	12	20	10

*nominal flow rate at 6 Bar - *Débit nominal à 6 Bar - *portata nominale a 6 Bar

A158

FLOW REGULATOR PARALLEL BIDIRECTIONAL PUSH-ON / **RÉGULATEUR DE DÉBIT CYLINDRIQUE BIDIRECTIONNEL À COIFFE**
REGOLATORE DI FLUSSO CILINDRICO A CALZAMENTO BIDIREZIONALE

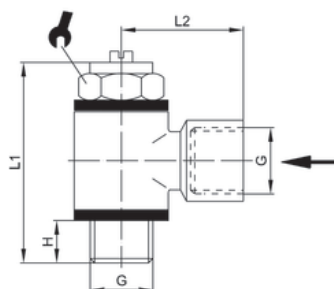


CODE	ØD	G	H	L1	L2	NI/min*	1	2	min.pcs.
A158 5/3-M5	5/3	M5	4	25	16	45	8	8	10
A158 6/4-M5	6/4	M5	4	25	16	45	9	8	10
A158 6/4-1/8	6/4	G1/8	5	32	21,5	310	10	14	10
A158 6/4-1/4	6/4	G1/4	6	37	24,5	420	10	17	10
A158 8/6-1/8	8/6	G1/8	5	32	20,5	310	12	14	10
A158 8/6-1/4	8/6	G1/4	6	37	22,5	420	12	17	10

*nominal flow rate at 6 Bar - *Débit nominal à 6 Bar - *portata nominale a 6 Bar

A159

FLOW REG. PARALLEL FOR VALVES FEMALE THREAD / **RÉGULATEUR DE DÉBIT CYLINDRIQUE TARAUDE POUR VALVE**
REGOLATORE DI FLUSSO CILINDRICO PER VALVOLE FEMMINA

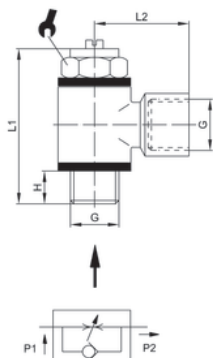


CODE	G	H	L1	L2	NI/min*	1	min.pcs.
A159 M5	M5	4	25	11,5	45	8	10
A159 1/8	G1/8	5	32	21	310	14	10
A159 1/4	G1/4	6	18	25,5	450	17	10
A159 3/8	G3/8	7	46	26	1040	20	10
A159 1/2	G1/2	10	52,5	32	2200	26	10

*nominal flow rate at 6 Bar - *Débit nominal à 6 Bar - *portata nominale a 6 Bar

A160

FLOW REGULATOR PARALLEL FOR CYLINDER FEMALE THREAD / **RÉGULATEUR DE DÉBIT CYLINDRIQUE TARAUDE POUR VERIN**
REGOLATORE DI FLUSSO CILINDRICO PER CILINDRI FEMMINA

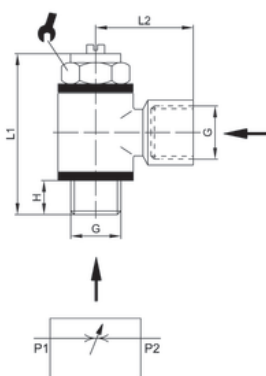


CODE	G	H	L1	L2	NI/min*		min.pcs.
A160 M5	M5	4	25	11,5	45	8	10
A160 1/8	G1/8	5	32	21	310	14	10
A160 1/4	G1/4	6	37	25,5	810	17	10
A160 3/8	G3/8	7	46	26	1040	20	10
A160 1/2	G1/2	10	52,5	32	2200	26	10

*nominal flow rate at 6 Bar - *Débit nominal à 6 Bar - *portata nominale a 6 Bar

A161

FLOW REGULATOR PARALLEL BIDIRECTIONAL FEMALE THREAD / **RÉGULATEUR DE DÉBIT CYLINDRIQUE TARAUDE BIDIRECTIONNEL**
REGOLATORE DI FLUSSO CILINDRICO BIDIREZIONALE FEMMINA

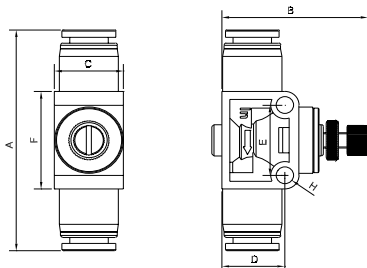


CODE	G	H	L1	L2	NI/min*		min.pcs.
A161 M5	M5	4	25	11,5	45	8	10
A161 1/8	G1/8	5	32	21	310	14	10
A161 1/4	G1/4	6	37	25,5	810	17	10
A161 3/8	G3/8	7	46	26	1040	20	10
A161 1/2	G1/2	10	52,5	32	2200	26	10

*nominal flow rate at 6 Bar - *Débit nominal à 6 Bar - *portata nominale a 6 Bar

NSF

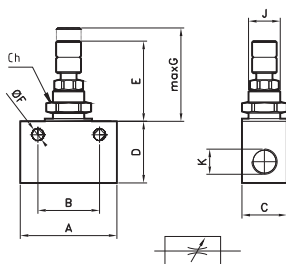
UNI-DIRECTIONAL IN LINE FLOW REGULATOR / **RÉGULATEUR DE DÉBIT EN LIGNE UNIDIRECTIONNEL**
REGOLATORE DI FLUSSO IN LINEA UNIDIREZIONALE



CODE	tube Ø	A	B max	B min	C	D	E	F	H	min.pcs.
NSF 0400N	4	49.6	39.7	34.1	17	15.5	18	25	4.3	10
NSF 0600N	6	53.1	39.7	34.1	17	15.5	18	25	4.3	10
NSF 0800N	8	56.6	39.7	34.1	17	15.5	18	25	4.3	10
NSF 1000N	10	65.1	48.8	40.9	21	21.5	24	31	4.3	10
NSF 1200N	12	70.3	48.8	40.9	21	21.5	24	31	4.3	10

RF4005

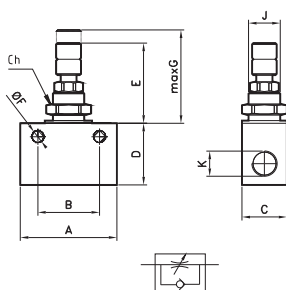
BI-DIRECTIONAL IN LINE FLOW REGULATOR / RÉGULATEUR DE DÉBIT BIDIRECTIONNEL EN LIGNE
REGOLATORE DI FLUSSO IN LINEA BIDIREZIONALE



CODE	K	A	B	C	D	E	F	G	CH	J
RF4005100	M5	25	18	12	20	23	4.5	28	12	10X1
RF4005200	1/8	35	24	15	22	24	4.5	29,5	12	10X1
RF4005300	1/4	40	24	20	30	26	4.5	32,5	12	10X1
RF4005400	3/8	45	30	22	35	31	6	39,5	18	15X1
RF4005500	1/2	57	30	27	40	31	6	39,5	18	15X1

RF4004

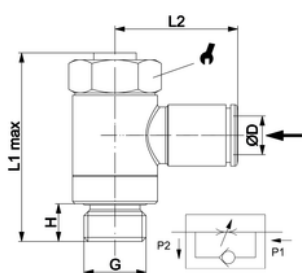
UNI-DIRECTIONAL IN LINE FLOW REGULATOR / RÉGULATEUR DE DÉBIT UNIDIRECTIONNEL EN LIGNE
REGOLATORE DI FLUSSO IN LINEA UNIDIREZIONALE



CODE	K	A	B	C	D	E	F	G	CH	J
RF4004100	M5	25	18	12	20	23	4.5	28	12	10X1
RF4004200	1/8	35	24	15	22	24	4.5	29,5	12	10X1
RF4004300	1/4	40	24	20	30	26	4.5	32,5	12	10X1
RF4004400	3/8	45	30	22	35	31	6	39,5	18	15X1
RF4004500	1/2	57	30	27	40	31	6	39,5	18	15X1

A131X

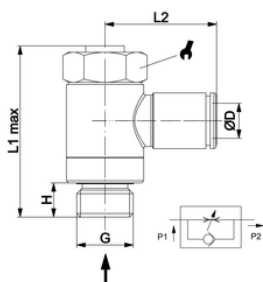
FLOW REGULATOR FOR VALVES IN STAINLESS STEEL / RÉGULATEUR DE DÉBIT EN INOX POUR VALVE
REGOLATORE DI FLUSSO PER VALVOLE IN INOX



CODE	ØD	G	H	L1 max	L2	⚙️
A131X 4-1/8	4	G1/8	7	32	21	14
A131X 6-1/8	6	G1/8	7	32	22,5	14
A131X 6-1/4	6	G1/4	8	40	24,5	17
A131X 8-1/8	8	G1/8	7	32	24	14
A131X 8-1/4	8	G1/4	8	40	26	17

A132X

FLOW REGULATOR FOR CYLINDER IN STAINLESS STEEL / RÉGULATEUR DE DÉBIT EN INOX POUR VERIN
REGOLATORE DI FLUSSO PER CILINDRI IN INOX



CODE	ØD	G	H	L1 max	L2	⚙️
A132X 4-1/8	4	G1/8	7	32	21	14
A132X 6-1/8	6	G1/8	7	32	22,5	14
A132X 6-1/4	6	G1/4	8	40	24,5	17
A132X 8-1/8	8	G1/8	7	32	24	14
A132X 8-1/4	8	G1/4	8	40	26	17