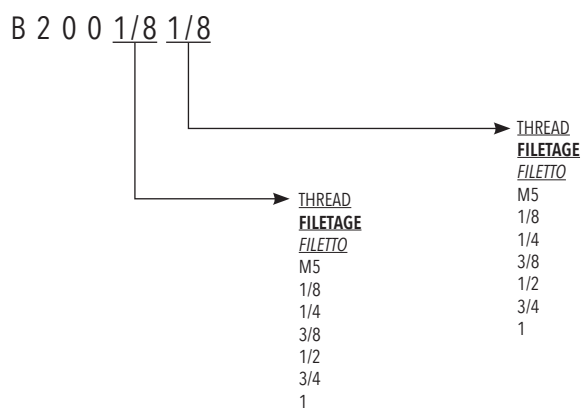




ORDERING CODE / CODIFICATIONS / CHIAVE DI CODIFICA

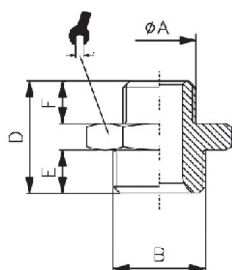


TECHNICAL DATA / DONNÉES TECHNIQUES / DATI TECNICI

Fluid / <b>Fluide</b> / <i>Fluido</i>	Air / <b>Air</b> / <i>Aria</i>
Temperature range / <b>Température d'utilisation</b> / <i>Temperatura di esercizio</i>	- 20°C / +80°C
Max operating pressure / <b>Pression d'utilisation max.</b> / <i>Pressione massima</i>	60 bar
Material / <b>Matière</b> / <i>Materiale</i>	Brass / <b>Laiton</b> / <i>Ottone UNI EN 12164 CW 614N</i> Brass / <b>Laiton</b> / <i>Ottone UNI EN 12165 CW 617N</i>
Surface used / <b>Traitement de surface</b> / <i>Trattamento superficiale</i>	Nickel-piting / <b>Nickelage</b> / <i>nichelatura</i>
Threads / <b>Filetage</b> / <i>Filettature</i>	Parallel / <b>Cylindrique</b> / <i>Cilindrica DIN EN ISO 228</i> Taper / <b>Conique</b> / <i>Conico DIN EN 10226 (DIN 2999)</i> Metric / <b>Métrique</b> / <i>Metrico DIN ISO 262</i>

**B216**

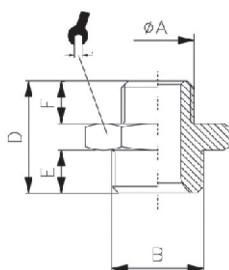
NIPPLE PARALLEL / MAMELON CYLINDRIQUE / NIPPLO CILINDRICO



CODE	A	B	D	E	F		min.pcs.
B216 M5	M5	M5	11,5	4,0	4,0	8	10
B216 1/8	G1/8	G1/8	16,5	6,0	6,0	14	10
B216 1/4	G1/4	G1/4	21,0	8,0	8,0	17	10
B216 3/8	G3/8	G3/8	23,0	9,0	9,0	19	10
B216 1/2	G1/2	G1/2	25,5	10,0	10,0	24	10
B216 3/4	G3/4	G3/4	28,5	11,0	11,0	30	10

**B217**

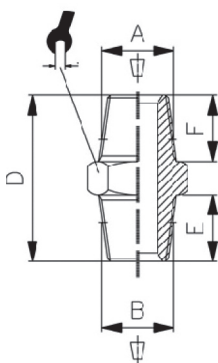
REDUCER PARALLEL / RÉDUCTION CYLINDRIQUE / RIDUZIONE CILINDRICO



CODE	A	B	D	E	F		min.pcs.
B217 M5 1/8	M5	G1/8	14,5	6,0	4,0	14	10
B217 1/8 1/4	G1/8	G1/4	19,0	8,0	6,0	17	10
B217 1/8 3/8	G1/8	G3/8	20,0	9,0	6,0	19	10
B217 1/4 3/8	G1/4	G3/8	22,0	9,0	8,0	19	10
B217 1/4 1/2	G1/4	G1/2	23,5	10,0	8,0	24	10
B217 3/8 1/2	G3/8	G1/2	24,5	10,0	9,0	24	10
B217 1/2-3/4	G1/2	G3/4	27,5	11,0	10,0	30	10
B217 3/4 1	G3/4	G1	32,0	23,0	15,0	22	10

**B214**

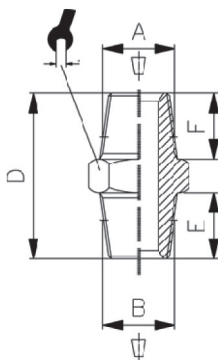
NIPPLE TAPER / MAMELON CONIQUE / NIPPLO CONICO



CODE	A	B	D	E	F		min.pcs.
B214 1/8	R1/8	R1/8	20,5	8,0	8,0	12	10
B214 1/4	R1/4	R1/4	27,0	11,0	11,0	14	10
B214 3/8	R3/8	R3/8	28,0	11,5	11,5	17	10
B214 1/2	R1/2	R1/2	33,5	14,0	14,0	22	10
B214 3/4	R3/4	R3/4	39,5	16,5	16,5	27	10
B214 1	R1	R1	45,5	19,0	19,0	34	10

**B215**

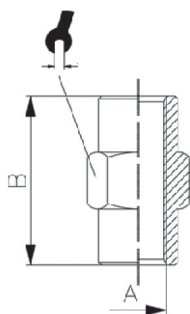
REDUCER TAPER / RÉDUCTION CONIQUE / RIDUZIONE CONICO



CODE	A	B	D	E	F		min.pcs.
B215 1/8 1/4	R1/8	R1/4	24,0	11,0	8,0	14	10
B215 1/8 3/8	R1/8	R3/8	24,5	11,5	8,0	17	10
B215 1/4 3/8	R1/4	R3/8	27,5	11,5	11,0	17	10
B215 1/4 1/2	R1/4	R1/2	30,5	14,0	11,0	22	10
B215 3/8 1/2	R3/8	R1/2	31,0	14,0	11,5	22	10
B215 1/2 3/4	R1/2	R3/4	37,0	16,5	14,0	27	10
B215 3/4 1	R3/4	R1	42,5	19,0	16,5	34	10

**B223**

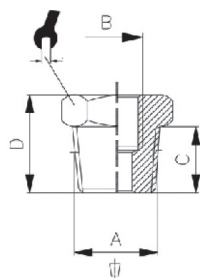
SLEEVE / MANCHON / MANICOTTO



CODE	A	B	⌘	min.pcs.
B223 M5	M5	11,0	8	10
B223 1/8	G1/8	15,0	14	10
B223 1/4	G1/4	22,0	17	10
B223 3/8	G3/8	23,0	22	10
B223 1/2	G1/2	28,0	26	10
B223 3/4	G3/4	32,0	32	10

**B221**

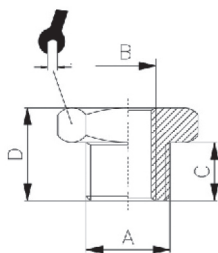
REDUCER TAPER / RÉDUCTION CONIQUE / RIDUZIONE CONICA



CODE	A	B	C	D	⌘	min.pcs.
B221 1/4 1/8	R1/4	G1/8	11,0	16,0	14	10
B221 3/8 1/8	R3/8	G1/8	11,5	16,5	17	10
B221 3/8 1/4	R3/8	G1/4	11,5	16,5	17	10
B221 1/2 1/8	R1/2	G1/8	14,0	19,5	22	10
B221 1/2 1/4	R1/2	G1/4	14,0	19,5	22	10
B221 1/2 3/8	R1/2	G3/8	14,0	19,5	22	10
B221 3/4 3/8	R3/4	G3/8	16,5	23,0	27	10
B221 3/4 1/2	R3/4	G1/2	16,5	23,0	27	10
B221 1 1/2	R1	G1/2	14,0	21,5	34	10

**B222**

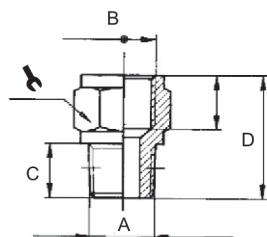
REDUCER PARALLEL / RÉDUCTION CYLINDRIQUE / RIDUZIONE CILINDRICA



CODE	A	B	C	D	⌘	min.pcs.
B222 1/8 M5	G1/8	M5	6,0	10,5	14	10
B222 1/4 1/8	G1/4	G1/8	8,0	13,0	17	10
B222 3/8 1/8	G3/8	G1/8	9,0	14,0	19	10
B222 3/8 1/4	G3/8	G1/4	9,0	14,0	19	10
B222 1/2-1/8	G1/2	G1/8	10,0	15,5	24	10
B222 1/2-1/4	G1/2	G1/4	10,0	15,5	24	10
B222 1/2-3/8	G1/2	G3/8	10,0	15,5	24	10
B222 3/4 3/8	G3/4	G3/8	11,0	17,5	30	10
B222 3/4 1/2	G3/4	G1/2	11,0	17,5	30	10

**B218**

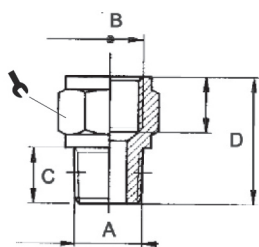
EXTENSION TAPER / RÉDUCTION CONIQUE / PROLUNGA RIDUZIONE CONICA



CODE	A	B	C	D	⌘	min.pcs.
B218 1/8	R1/8	G1/8	8,0	18,0	14	10
B218 1/8 1/4	R1/8	G1/4	8,0	21,5	17	10
B218 1/8 3/8	R1/8	G3/8	8,0	22,5	22	10
B218 1/4	R1/4	G1/4	11,0	24,5	17	10
B218 1/4 3/8	R1/4	G3/8	11,0	25,5	22	10
B218 1/4 1/2	R1/4	G1/2	11,0	29,0	24	10
B218 3/8	R3/8	G3/8	11,5	26,0	22	10
B218 3/8 1/2	R3/8	G1/2	11,5	29,5	24	10
B218 1/2	R1/2	G1/2	14,0	32,0	26	10
B218 1/2 3/4	R1/2	G3/4	14,0	35,0	32	10

**B219**

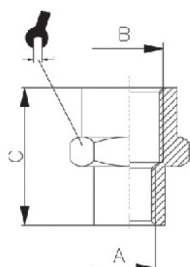
EXTENSION PARALLEL / RÉDUCTION FEMELLE CYLINDRIQUE / PROLUNGA RIDUZIONE CILINDRICA



CODE	A	B	C	D		min.pcs.
B219 M5 1/8	M5	G1/8	4,0	14,5	14	10
B219 1/8	G1/8	G1/8	6,0	16,0	14	10
B219 1/8 1/4	G1/8	G1/4	6,0	19,5	17	10
B219 1/8 3/8	G1/8	G3/8	6,0	20,5	22	10
B219 1/4	G1/4	G1/4	8,0	21,5	17	10
B219 1/4 3/8	G1/4	G3/8	8,0	22,5	22	10
B219 1/4 1/2	G1/4	G1/2	8,0	26,0	24	10
B219 3/8	G3/8	G3/8	9,0	23,5	22	10
B219 3/8 1/2	G3/8	G1/2	9,0	27,0	24	10
B219 1/2	G1/2	G1/2	10,0	28,0	26	10

**B224**

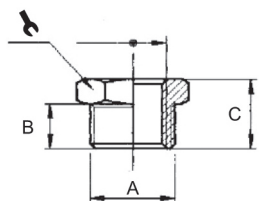
REDUCER SLEEVE / RÉDUCTION FEMELLE / MANICOTTO RIDUZIONE



CODE	A	B	C		min.pcs.
B224 M5 1/8	M5	G1/8	13,5	14	10
B224 1/8 1/4	G1/8	G1/4	19,0	17	10
B224 1/8 3/8	G1/8	G3/8	20,0	22	10
B224 1/8 1/2	G1/8	G1/2	24,0	24	10
B224 1/4 3/8	G1/4	G3/8	22,5	22	10
B224 1/4 1/2	G1/4	G1/2	26,0	24	10
B224 3/8 1/2	G3/8	G1/2	26,0	24	10
B224 1/2 3/4	G1/2	G3/4	30,0	32	10

**B229**

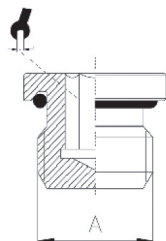
MALE PLUG PARALLEL / BOUCHON CYLINDRIQUE / TAPPO MASCHIO CILINDRICO



CODE	A	B	C		min.pcs.
B229 M5	M5	4,0	7,0	8	10
B229 1/8	G1/8	6,0	10,0	14	10
B229 1/4	G1/4	8,0	12,5	17	10
B229 3/8	G3/8	9,0	13,5	19	10
B229 1/2	G1/2	10,0	15,5	24	10
B229 3/4	G3/4	11,0	16,5	30	10
B229 1	G1	13,0	19,0	38	10

**B230**

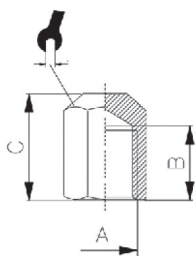
MALE PLUG PARALLEL WITH O-RING / BOUCHON CYLINDRIQUE AVEC O-RING / TAPPO CON O-RING



CODE	A	B	L	ØD		min.pcs.
B230 M5	M5	4,5	7,2	8,0	2,5	10
B230 1/8	G1/8	6,5	9,5	14,0	5	10
B230 1/4	G1/4	8	11,5	17,0	6	10
B230 3/8	G3/8	9	12,5	20,0	8	10
B230 1/2	G1/2	10	14,0	26,0	10	10

**B231**

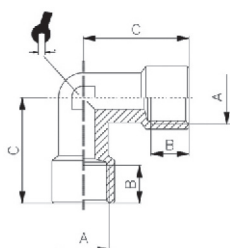
FEMALE PLUG / BOUCHON FEMELLE / TAPPO FEMMINA



CODE	A	B	C		min.pcs.
B231 1/8	G1/8	8,0	11,5	14	10
B231 1/4	G1/4	11,0	15,0	17	10
B231 3/8	G3/8	11,5	15,5	20	10
B231 1/2	G1/2	14,0	20,0	24	10

**B203**

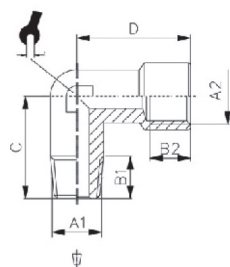
FEMALE ELBOW / L FEMELLE / L FEMMINA



CODE	A	B	C		min.pcs.
B203 M5	M5	4,0	11,0	8	10
B203 1/8	G1/8	8,0	21,0	10	10
B203 1/4	G1/4	11,0	25,5	13	10
B203 3/8	G3/8	11,5	28,0	17	10
B203 1/2	G1/2	14,0	33,5	21	10
B203 3/4	G3/4	16,5	36,5	25	10
B203 1	G1	19,0	45,0	30	10

**B202**

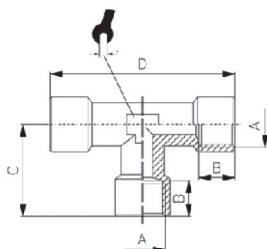
MALE - FEMALE ELBOW / L MALE - FEMELLE / L MASCHIO - FEMMINA



CODE	A1	A2	B1	B2	C	D		min.pcs.
B202 M5	M5	M5	4,0	5,0	11,5	11,0	9	10
B202 1/8	R1/8	G1/8	8,0	8,0	18,5	21,0	10	10
B202 1/4	R1/4	G1/4	11,0	11,0	23,5	25,5	13	10
B202 3/8	R3/8	G3/8	11,5	11,5	26,0	28,0	17	10
B202 1/2	R1/2	G1/2	14,0	14,0	31,0	33,5	21	10
B202 3/4	R3/4	G3/4	16,0	16,5	33,0	36,5	25	10
B202 1	R1	G1	17,0	19,0	39,0	45,0	30	10

**B207**

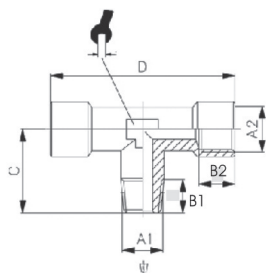
FEMALE TEE / T FEMELLE / T FEMMINA



CODE	A	B	C	D		min.pcs.
B207 M5	M5	5	11,0	22,0	9	10
B207 1/8	G1/8	8,0	21,0	42,0	10	10
B207 1/4	G1/4	11,0	25,5	51,0	13	10
B207 3/8	G3/8	11,5	28,0	56,0	17	10
B207 1/2	G1/2	14,0	33,5	67,0	21	10
B207 3/4	G3/4	16,5	36,5	73,0	25	10
B207 1	G1	19,0	45,0	90,0	30	10

**B208**

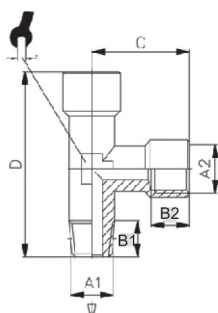
MALE FEMALE TEE / T MALE FEMELLE CENTRAL / T MASCHIO FEMMINA CENTRALE



CODE	A1	A2	B1	B2	C	D		min.pcs.
B208 M5	M5	M5	4,0	5,0	11,5	22,0	9	10
B208 1/8	R1/8	G1/8	8,0	8,0	18,5	42,0	10	10
B208 1/4	R1/4	G1/4	11,0	11,0	23,5	51,0	13	10
B208 3/8	R3/8	G3/8	11,5	11,5	26,0	56,0	17	10
B208 1/2	R1/2	G1/2	14,0	14,0	31,0	67,0	21	10
B208 3/4	R3/4	G3/4	16,0	16,5	33,0	73,0	25	10
B208 1	R1	G1	17,5	19,0	39,0	90,0	30	10

**B206**

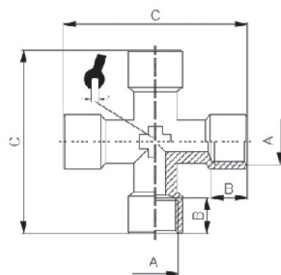
MALE FEMALE LATERAL TEE / T MALE FEMELLE / T MASCHIO FEMMINA LATERALE



CODE	A1	A2	B1	B2	C	D		min.pcs.
B206 M5	M5	M5	4,0	5,0	11,0	22,5	9	10
B206 1/8	R1/8	G1/8	8,0	8,0	21,0	39,5	10	10
B206 1/4	R1/4	G1/4	11,0	11,0	25,5	49,0	13	10
B206 3/8	R3/8	G3/8	11,5	11,5	28,0	54,0	17	10
B206 1/2	R1/2	G1/2	14,0	14,0	33,5	64,5	21	10
B206 3/4	R3/4	G3/4	16,5	16,5	36,5	69,5	25	10
B206 1	R1	G1	17,5	19,0	45,0	84,0	30	10

**B212**

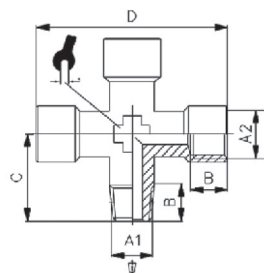
CROSS FEMALE TEE / CROIX FEMELLE / CROCE FEMMINA



CODE	A	B	C		min.pcs.
B212 1/8	G1/8	8,0	42,0	10	10
B212 1/4	G1/4	11,0	51,0	13	10
B212 3/8	G3/8	11,5	56,0	17	10
B212 1/2	G1/2	14,0	67,0	21	10

**B213**

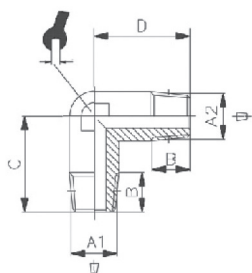
MALE FEMALE CROSS TEE / CROIX MALE FEMELLE / CROCE MASCHIO FEMMINA




CODE	A1	A2	B	C	D		min.pcs.
B213 1/8	R1/8	G1/8	8,0	18,5	42,0	10	10
B213 1/4	R1/4	G1/4	11,0	23,5	51,0	13	10
B213 3/8	R3/8	G3/8	11,5	26,0	56,0	17	10
B213 1/2	R1/2	G1/2	14,0	31,0	67,0	21	10

**B201**

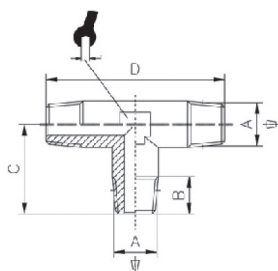
MALE ELBOW / L MALE / L MASCHIO




CODE	A1	A2	B1	B2	C	D		min.pcs.
B201 M5	M5	M5	4,0	4,0	11,5	11,5	8	10
B201 1/8	R1/8	R1/8	8,0	8,0	18,5	18,5	10	10
B201 1/4	R1/4	R1/4	11,0	11,0	23,5	23,5	13	10
B201 3/8	R3/8	R3/8	11,5	11,5	26,0	26,0	17	10
B201 1/2	R1/2	R1/2	14,0	14,0	31,0	31,0	21	10
B201 3/4	R3/4	R3/4	16,0	16,0	33,0	33,0	25	10
B201 1	R1	R1	17,0	17,0	39,0	39,0	30	10

**B204**

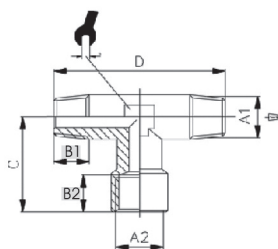
MALE TEE / T MALE / T MASCHIO




CODE	A	B	C	D		min.pcs.
B204 1/8	R1/8	8,0	18,5	37,0	10	10
B204 1/4	R1/4	11,0	23,5	47,0	13	10
B204 3/8	R3/8	11,5	26,0	52,0	17	10
B204 1/2	R1/2	14,0	31,0	62,0	21	10
B204 3/4	R3/4	16,2	33,0	66,4	25	10
B204 1	R1	17,5	39,0	78,0	30	10

**B205**

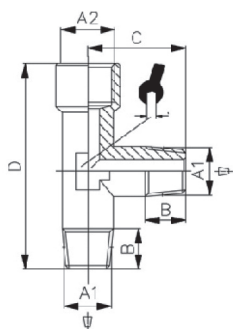
FEMALE MALE TEE / T MALE FEMELLE CENTRAL / T MASCHIO FEMMINA CENTRALE



CODE	A1	A2	B1	B2	C	D		min.pcs.
B205 1/8	R1/8	G1/8	8,0	8,0	21,0	37,0	10	10
B205 1/4	R1/4	G1/4	11,0	11,0	25,5	47,0	13	10
B205 3/8	R3/8	G3/8	11,5	11,5	28,0	52,0	17	10
B205 1/2	R1/2	G1/2	14,0	14,0	33,5	62,0	21	10
B205 3/4	R3/4	G3/4	16,2	16,5	36,5	66,4	25	10
B205 1	R1	G1	17,5	19,0	45,0	78,0	30	10

**B209**

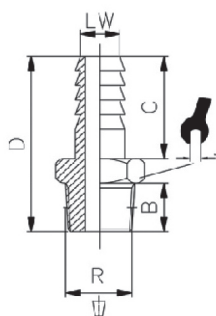
MALE FEMALE TEE / T MALE FEMELLE / T MASCHIO FEMMINA



CODE	A1	A2	B	C	D	⌘	min.pcs.
B209 1/8	R1/8	G1/8	8,0	18,5	39,5	10	10
B209 1/4	R1/4	G1/4	11,0	23,5	49,0	13	10
B209 3/8	R3/8	G3/8	11,5	26,0	54,0	17	10
B209 1/2	R1/2	G1/2	14,0	31,0	64,5	21	10
B209 3/4	R3/4	G3/4	16,0	33,0	69,5	25	10
B209 1	R1	G1	17,5	39,0	84,0	30	10

**B225**

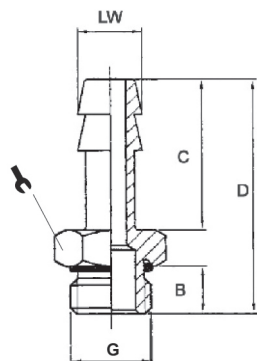
MALE HOSE ADAPTOR TAPER / DOUILLE CANNELÉE CONIQUE / PORTAGOMMA MASCHIO CONICO



CODE	LW	R	B	C	D	⌘	min.pcs.
B225 6 1/8	6,0	R1/8	8,0	19,0	31,5	12	10
B225 6 1/4	6,0	R1/4	11,0	19,0	35,0	14	10
B225 7 1/8	7,0	R1/8	8,0	19,0	31,5	12	10
B225 7 1/4	7,0	R1/4	11,0	19,0	35,0	14	10
B225 8 1/8	8,0	R1/8	8,0	19,0	31,5	12	10
B225 8 1/4	8,0	R1/4	11,0	19,0	35,0	14	10
B225 9 1/8	9,0	R1/8	8,0	19,0	31,5	12	10
B225 9 1/4	9,0	R1/4	11,0	19,0	35,0	14	10
B225 9 3/8	9,0	R3/8	11,5	19,0	35,5	17	10
B225 9 1/2	9,0	R1/2	14,0	19,0	38,5	22	10
B225 10 1/8	10,0	R1/8	8,0	20,0	32,5	12	10
B225 10 1/4	10,0	R1/4	11,0	20,0	36,0	14	10
B225 10 3/8	10,0	R3/8	11,5	20,0	36,5	17	10
B225 10 1/2	10,0	R1/2	14,0	20,0	39,5	22	10
B225 12 1/4	12,0	R1/4	11,0	20,0	36,0	14	10
B225 12 3/8	12,0	R3/8	11,5	20,0	36,5	17	10
B225 12 1/2	12,0	R1/2	14,0	20,0	39,5	22	10
B225 14 3/8	14,0	R3/8	11,5	22,0	38,5	17	10
B225 14 1/2	14,0	R1/2	14,0	22,0	41,5	22	10
B225 16 3/8	16,0	R3/8	11,5	22,0	38,5	17	10
B225 16 1/2	16,0	R1/2	14,0	22,0	41,5	22	10
B225 16 3/4	16,0	R3/4	16,5	22,0	45,0	27	10
B225 17 3/8	17,0	R3/8	11,5	24,0	40,5	18	10
B225 17 1/2	17,0	R1/2	14,0	24,0	43,5	22	10
B225 18 3/8	18,0	R3/8	11,5	24,0	40,5	19	10
B225 18 1/2	18,0	R1/2	14,0	24,0	43,5	22	10
B225 18 3/4	18,0	R3/4	16,5	24,0	47,0	27	10
B225 20 3/8	20,0	R3/8	11,5	24,0	41,0	22	10
B225 20 1/2	20,0	R1/2	14,0	24,0	43,5	22	10
B225 20 3/4	20,0	R3/4	16,5	24,0	46,5	27	10
B225 25 3/4	25,0	R3/4	16,5	30,0	53,0	27	10
B225 25 1	25,0	R1	19,0	30,0	56,0	34	10

**B227**

MALE HOSE ADAPTOR PARALLEL / DOUILLE CANNELÉE CYLINDRIQUE / PORTAGOMMA MASCHIO CILINDRICO

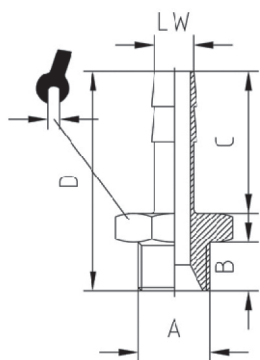


CODE	LW	G	B	C	D	⌘	min.pcs.
B227 4,5 M5	4,5	M5	4,5	15,0	23,0	8	10
B227 6 1/8	6,0	G1/8	6,5	19,0	30,0	14	10
B227 6 1/4	6,0	G1/4	8,0	19,0	32,0	17	10
B227 7 1/8	7,0	G1/8	6,5	19,0	30,0	14	10
B227 7 1/4	7,0	G1/4	8,0	19,0	32,0	17	10
B227 8 1/8	8,0	G1/8	6,5	19,0	30,0	14	10
B227 8 1/4	8,0	G1/4	8,0	19,0	32,0	17	10
B227 9 1/8	9,0	G1/8	6,5	19,0	30,0	14	10
B227 9 1/4	9,0	G1/4	8,0	19,0	32,0	17	10
B227 9 3/8	9,0	G3/8	9,0	19,0	33,0	20	10
B227 12 1/4	12,0	G1/4	8,0	20,0	33,0	17	10
B227 12 3/8	12,0	G3/8	9,0	20,0	34,0	20	10
B227 12 1/2	12,0	G1/2	10,0	20,0	35,5	25	10
B227 17 3/8	17,0	G3/8	9,0	24,0	38,0	20	10
B227 17 1/2	17,0	G1/2	10,0	24,0	39,5	25	10



**B226**

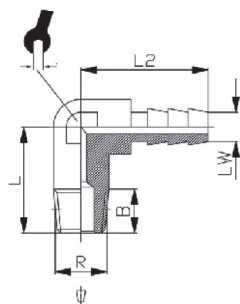
MALE HOSE ADAPTOR PARALLEL / DOUILLE CANNELÉE CYLINDRIQUE / PORTAGOMMA MASCHIO CILINDRICO



CODE	LW	A	C	B	D		min.pcs.
B226 4,5 M5	4,5	M5	15,0	4,0	22,5	8	10
B226 6 1/8	6,0	G1/8	19,0	6,0	29,5	12	10
B226 6 1/4	6,0	G1/4	19,0	8,0	32,0	14	10
B226 7 1/8	7,0	G1/8	19,0	6,0	29,5	12	10
B226 7 1/4	7,0	G1/4	19,0	8,0	32,0	14	10
B226 8 1/8	8,0	G1/8	19,0	6,0	29,5	12	10
B226 8 1/4	8,0	G1/4	19,0	8,0	32,0	14	10
B226 8 3/8	8,0	G3/8	19,0	9,0	33,0	19	10
B226 9 1/8	9,0	G1/8	19,0	6,0	29,5	12	10
B226 9 1/4	9,0	G1/4	19,0	8,0	32,0	14	10
B226 9 3/8	9,0	G3/8	19,0	9,0	33,0	19	10
B226 10 1/8	10,0	G1/8	20,0	6,0	30,5	12	10
B226 10 1/4	10,0	G1/4	20,0	8,0	33,0	14	10
B226 10 3/8	10,0	G3/8	20,0	9,0	34,0	19	10
B226 12 1/4	12,0	G1/4	20,0	8,0	33,0	14	10
B226 12 3/8	12,0	G3/8	20,0	9,0	34,0	19	10
B226 12 1/2	12,0	G1/2	20,0	10,0	35,5	22	10
B226 14 3/8	14,0	G3/8	22,0	9,0	36,0	19	10
B226 14 1/2	14,0	G1/2	22,0	10,0	37,5	22	10
B226 17 3/8	17,0	G3/8	24,0	9,0	38,0	19	10
B226 17 1/2	17,0	G1/2	24,0	10,0	39,5	22	10
B226 18 3/4	18,0	G3/4	24,0	11,0	41,5	30	10
B226 20 1/2	20,0	G1/2	24,0	10,0	39,5	22	10
B226 20 3/4	20,0	G3/4	24,0	11,0	41,5	30	10

**B240**

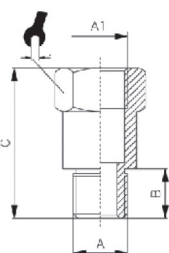
90° HOSE ADAPTOR / DOUILLE CANNELÉE EN L / PORTAGOMMA A L



CODE	LW	R	B	L	L1	L2		min.pcs.
B240 6 1/8	6,0	R1/8	8,0	18,5	14,0	22,5	8	10
B240 6 1/4	6,0	R1/4	11,0	23,0	14,0	23,0	9	10
B240 7 1/8	7,0	R1/8	8,0	18,5	14,0	22,5	8	10
B240 7 1/4	7,0	R1/4	11,0	23,0	14,0	23,0	9	10

**B220**

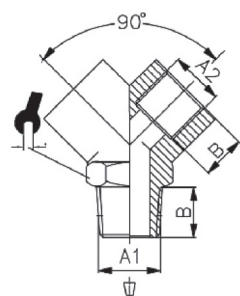
EXTENSION CONNECTOR / PROLONGATEUR / RIDUZIONE PROLUNGA



CODE	A	A1	B	C		min.pcs.
B220 181422	G1/8	G1/8	6,0	22,0	14	10
B220 181442	G1/8	G1/8	6,0	42,0	14	10
B220 181451	G1/8	G1/8	6,0	51,0	14	10
B220 141735	G1/4	G1/4	8,0	35,0	17	10
B220 141751	G1/4	G1/4	8,0	51,0	17	10

**B210**

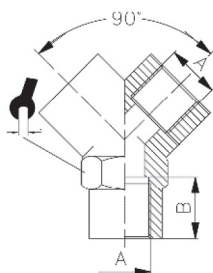
MALE FEMALE Y / Y MALE FEMELLE / Y MASCHIO FEMMINA



CODE	A	B		min.pcs.
B210 1/8	1/8	8,0	13	10
B210 1/4	1/4	11,0	17	10
B210 3/8	3/8	11,5	20	10
B210 1/2	1/2	14,0	25	10

**B211**

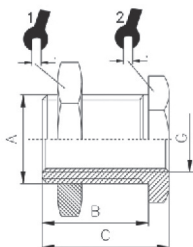
FEMALE Y / Y FEMELLE / Y FEMMINA



CODE	A	B		min.pcs.
B211 1/8	G1/8	8,0	13	10
B211 1/4	G1/4	11,0	17	10
B211 3/8	G3/8	11,5	20	10
B211 1/2	G1/2	14,0	25	10

**B233**

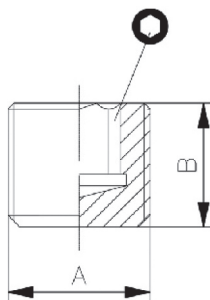
FEMALE BULKHEAD / TRAVERSÉE DE CLOISON / PASSAPARETE FEMMINA



CODE	G	A	B	C			min.pcs.
B233 M5	M5	M10x1	10,5	14,0	14	14	10
B233 1/8	G1/8	M16x1,5	14,0	18,0	22	19	10
B233 1/4	G1/4	M20x1,5	21,0	25,0	27	24	10
B233 3/8	G3/8	M26x1,5	21,0	26,0	32	30	10
B233 1/2	G1/2	M28x1,5	27,0	33,0	36	32	10

**B241**

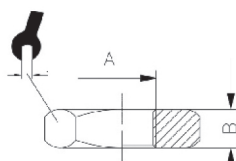
PLUG TAPER / BOUCHON CONIQUE / TAPPO CONICO



CODE	A	B		min.pcs.
B241 1/8	R1/8	8,0	5	10
B241 1/4	R1/4	10,0	6	10
B241 3/8	R3/8	11,0	8	10
B241 1/2	R1/2	13,0	10	10

**B232**

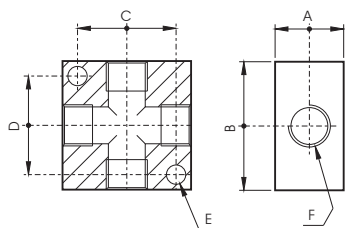
NUT / ÉCROU / DADO



CODE	A	B		min.pcs.
B232 1/8	G1/8	4,5	14	10
B232 1/4	G1/4	5	17	10
B232 3/8	G3/8	5,5	19	10
B232 1/2	G1/2	6	24	10
B232 3/4	G3/4	6	32	10
B232 1	G1	8	38	10

**RC**

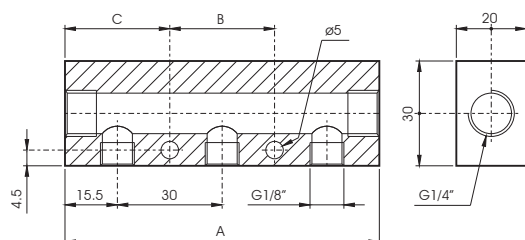
TEE CROSS MANIFOLD / **REPARTITEUR EN CROIX** / *RIPARTITORE A CROCE*



CODE	F	A	B	C	D	E
RC40304502	1/8	16	30	23	22	4,5
RC40304503	1/4	20	40	30	27	5,5
RC40304504	3/8	25	50	38	39	6,5
RC40304505	1/2	25	50	38	39	6,5

**RC**

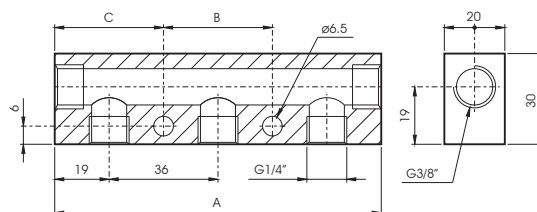
SINGLE MANIFOLD 1/4 - 1/8 / **COLLECTEUR 1/4 - 1/8** / *RIPARTITORE SINGOLO 1/4 - 1/8*



CODE	N°	A	B	C
RC40302407	2	61	50	5,5
RC40302507	3	91	30	30,5
RC40302607	4	121	60	30,5
RC40302707	5	151	90	30,5
RC40302807	6	181	120	30,5

**RC**

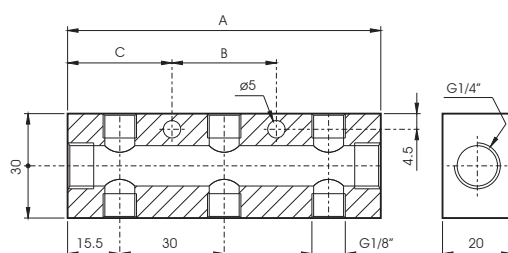
SINGLE MANIFOLD 3/8 - 1/4 / **COLLECTEUR DOUBLE 3/8 - 1/4** / *RIPARTITORE SINGOLO 3/8 - 1/4*



CODE	N°	A	B	C
RC40302417	2	74	61	6,5
RC40302517	3	110	36	37
RC40302617	4	146	72	37
RC40302717	5	182	108	37
RC40302817	6	218	144	37

**RC**

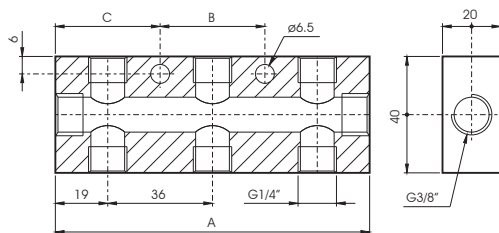
DOUBLE MANIFOLD 1/4 - 1/8 / **COLLECTEUR DOUBLE 1/4 - 1/8** / *RIPARTITORE DOPPIO 1/4 - 1/8*



CODE	N°	A	B	C
RC40302907	2	61	50	5,5
RC40303007	3	91	30	30,5
RC40303107	4	121	60	30,5
RC40303207	5	151	90	30,5

**RC**

DOUBLE MANIFOLD 3/8 - 1/4 / COLLECTEUR DOUBLE 3/8 - 1/4 / RIPARTITORE DOPPIO 3/8 - 1/4



CODE	N°	A	B	C
RC40302917	2	74	61	6,5
RC40303017	3	110	36	37
RC40303117	4	146	72	37
RC40303217	5	182	108	37
RC40303317	6	218	144	37