



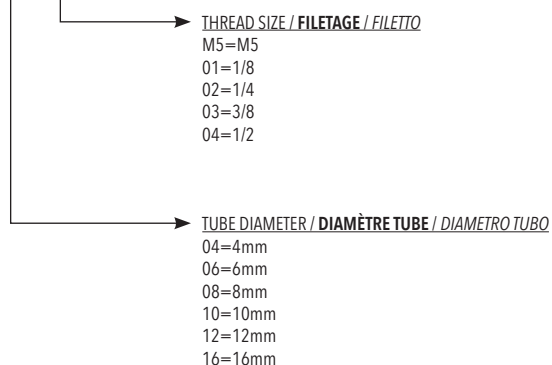
Push-in fittings are so defined as they allow to connect the tube to the fitting in a "instantaneous" way without using tools.
 The tightness of the tube takes place through an elastic clamp which holds the tube on the external diameter and releases it by pushing the suitable puller.
 This type of fittings is used in order to speed up the assembly phases mainly in reduced space and timesaving during connection of different pneumatic components.

Le raccord rapide est appelé ainsi car il permet de raccorder instantanément le tuyau à la connexion c'est à dire sans l'aide d'outils. L'étanchéité du tube a lieu au moyen d'une bague élastique qui maintient le tuyau flexible sur le diamètre extérieur et en actionnant cette bague le tuyau se déconnecte. Ce système est utilisé pour simplifier les étapes de montage. Idéal pour les espaces réduits ce raccord permet de gagner du temps dans la connexion des composants pneumatiques.

*I raccordi rapidi sono così denominati perché permettono di accoppiare il tubo al raccordo in modo istantaneo senza l'ausilio di utensili.
 La tenuta del tubo avviene per mezzo di una pinza elastica che trattiene il tubo sul diametro esterno e lo rilascia spingendo l'apposito estrattore. Questa tipologia di raccordi viene utilizzata per snellire le fasi di montaggio spesso in spazi ridotti e risparmiare tempo nei collegamenti dei vari componenti pneumatici.*

ORDERING CODE / CODIFICATION / CHIAVE DI CODIFICA

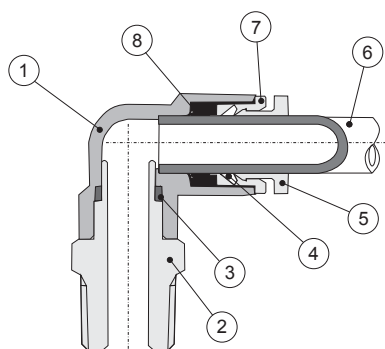
P C 0 6 0 1



TECHNICAL DATA / DONNÉES TECHNIQUES / DATI TECNICI

Fluid / Fluide / Fluido	Air / Air / Aria
Operating temperature range / Température d'utilisation / Temperatura di esercizio	0°C / +60°C
Maximum operating pressure / Pression de service Max / Pressione Massima di esercizio	11 bar
Negative pressure / Pression négative / Pressione negativa	-750 mm Hg (10 torr)
Threads / Filetage / Filettature	PT-thread from 1/8" to 1/2" - G-thread from 1/8" to 1/2" - Metric M5
Recommended tubes / Tubes recommandés / Tubi raccomandati	Polyamide (PA) / Polyuréthane (PU) / Polyethylene (PE)
Tube tolerances / Tolérance de Tubes / Tolleranza de Tubes	PU Tube +/- 0.02 mm

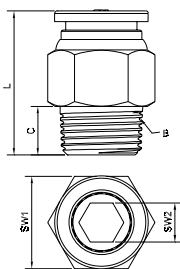
COMPONENTS / COMPOSANTS / COMPONENTI



pos.	Description / Description / Descrizione	Material / Matière / Materiale
1	body / corps / corpo	resin (PBT) / résine (PBT) / resina (PBT)
2	body / corps / corpo	nickel-plated brass / laiton nickelé / ottone nichelato
3	o-ring / Joint torique / o-ring	NBR
4	lock claws / griffes de verrouillage / pinza di chiusura	steel / acier / acciaio
5	sleeve / bague / colletto	resin (PBT) / résine (PBT) / resina (PBT)
6	tube / tube / tubo	PA / PU
7	collare / collerette / collet	brass / laiton / ottone
8	o-ring / Joint torique / o-ring	NBR

PC

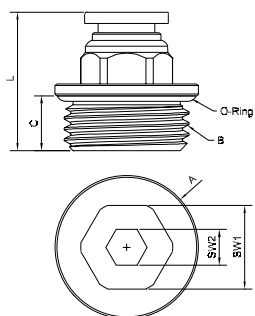
STRAIGHT MALE ADAPTOR TAPER / **DROIT MÂLE CONIQUE** / **DIRITTO MASCHIO CONICO**



CODE	tube Ø	B	C	L	SW1	SW2	min.pcs.
PC 0401N	4	R1/8	7.5	21	10	3	10
PC 0402N	4	R1/4	9	20	14	3	10
PC 0601N	6	R1/8	7.5	21.4	12	5	10
PC 0602N	6	R1/4	9	21.9	14	5	10
PC 0603N	6	R3/8	10	22.9	17	5	10
PC 0801N	8	R1/8	7.5	25.8	14	5	10
PC 0802N	8	R1/4	9	24.3	14	6	10
PC 0803N	8	R3/8	10	23	17	6	10
PC 0804N	8	R1/2	13	26	21	6	10
PC 1001N	10	R1/8	7.5	28.4	17	5	10
PC 1002N	10	R1/4	9	28.4	17	6	10
PC 1003N	10	R3/8	10	28.1	17	8	10
PC 1004N	10	R1/2	13	26.6	21	8	10
PC 1202N	12	R1/4	9	32.1	19	6	10
PC 1203N	12	R3/8	10	30.2	19	8	10
PC 1204N	12	R1/2	13	30.6	21	8	10
PC 1603N	16	R3/8	10	34.5	24	12.5	10
PC 1604N	16	R1/2	13	35.5	24	15	10

PC-G

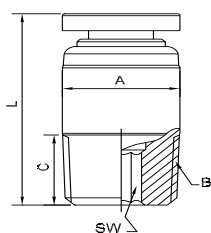
STRAIGHT MALE ADAPTOR PARALLEL / **DROIT MÂLE CYLINDRIQUE** / **DIRITTO MASCHIO CILINDRICO**



CODE	tube Ø	A	B	C	L	SW1	SW2	min.pcs.
PC-G 04M5N	4	-	M5	3.5	20	10	-	10
PC-G 0401N	4	14	G1/8	5.5	19.5	10	3	10
PC-G 0402N	4	17	G1/4	6.9	19.5	10	3	10
PC-G 06M5N	6	-	M5	3.5	20.4	12	-	10
PC-G 0601N	6	14	G1/8	5.5	22.1	12	5	10
PC-G 0602N	6	17	G1/4	6.9	21.4	12	5	10
PC-G 0603N	6	19	G3/8	8.2	21.4	12	5	10
PC-G 0801N	8	14	G1/8	5.5	24.5	14	5	10
PC-G 0802N	8	17	G1/4	6.9	22.9	14	6	10
PC-G 0803N	8	19	G3/8	8.2	23.4	14	6	10
PC-G 0804N	8	24	G1/2	9.2	23.2	14	6	10
PC-G 1001N	10	14	G1/8	5.5	26.8	17	5	10
PC-G 1002N	10	17	G1/4	6.9	28.1	17	6	10
PC-G 1003N	10	19	G3/8	8.2	26.6	17	8	10
PC-G 1004N	10	24	G1/2	9.2	24.1	17	8	10
PC-G 1202N	12	17	G1/4	6.9	29.1	19	6	10
PC-G 1203N	12	19	G3/8	8.2	20.1	19	8	10
PC-G 1204N	12	24	G1/2	9.2	28.7	21	8	10
PC-G 1603N	16	22	G3/8	9.2	35.7	24	10	10
PC-G 1604N	16	24	G1/2	10	36.7	24	14	10

POC

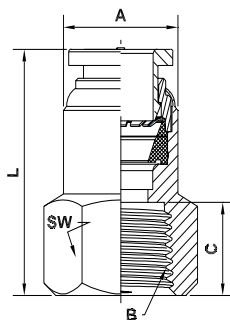
STRAIGHT MALE ADAPTOR INTERNAL HEXAGON / **DROIT MÂLE CONIQUE AVEC HEXAGONE INTÉRIEUR** / **DIRITTO MASCHIO CONICO CON BRUGOLA INTERNA**



CODE	tube Ø	A	B	C	L	SW	min.pcs.
POC 0401N	4	10	R1/8	7.5	20.5	3	10
POC 0402N	4	10	R1/4	9	19.5	3	10
POC 0601N	6	12	R1/8	7.5	20.5	5	10
POC 0602N	6	14	R1/4	9	21.4	5	10
POC 0603N	6	17	R3/8	10	22.4	5	10
POC 0801N	8	14	R1/8	7.5	25.5	5	10
POC 0802N	8	14	R1/4	9	24	6	10
POC 0803N	8	17	R3/8	10	22.7	6	10
POC 0804N	8	22	R1/2	13	25.7	6	10
POC 1001N	10	17	R1/8	7.5	27.9	5	10
POC 1002N	10	17	R1/4	9	27.9	6	10
POC 1003N	10	17	R3/8	10	27.9	8	10
POC 1004N	10	22	R1/2	13	27.9	8	10
POC 1202N	12	20	R1/4	9	32	6	10
POC 1203N	12	20	R3/8	10	29.5	8	10
POC 1204N	12	22	R1/2	13	30	8	10

PCF

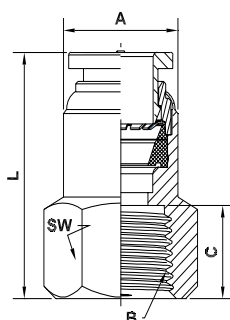
STRAIGHT FEMALE ADAPTOR TAPER / **DROIT FEMELLE CONIQUE** / *DIRITTO FEMMINA CONICO*



CODE	tube Ø	A Ø	B	C	L	SW	min.pcs.
PCF 0401N	4	10.6	R1/8	9.5	26	12	10
PCF 0402N	4	10.6	R1/4	11	27.5	17	10
PCF 0601N	6	12.4	R1/8	9.5	26.4	14	10
PCF 0602N	6	12.4	R1/4	11	27.9	17	10
PCF 0603N	6	12.4	R3/8	12	28.9	19	10
PCF 0801N	8	13.7	R1/8	9.5	27.8	14	10
PCF 0802N	8	14.6	R1/4	11	29.3	17	10
PCF 0803N	8	14.6	R3/8	12	30.3	19	10
PCF 0804N	8	14.6	R1/2	15	33.3	24	10
PCF 1001N	10	16.8	R1/8	9.5	29.8	17	10
PCF 1002N	10	16.8	R1/4	11	31.8	17	10
PCF 1003N	10	17.6	R3/8	12	32.8	19	10
PCF 1004N	10	17.6	R1/2	15	35.8	24	10
PCF 1202N	12	19.6	R1/4	11	34	21	10
PCF 1203N	12	19.6	R3/8	12	35	21	10
PCF 1204N	12	19.6	R1/2	15	38	24	10

PCF-G

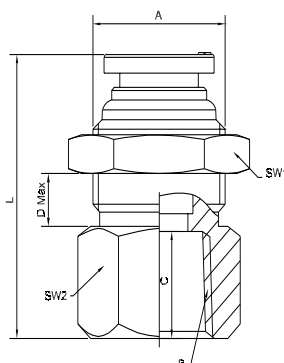
STRAIGHT FEMALE ADAPTOR PARALLEL / **DROIT FEMELLE CYLINDRIQUE** / *DIRITTO FEMMINA CILINDRICO*



CODE	tube Ø	A Ø	B	C	L	SW	min.pcs.
PCF-G 0401N	4	10.6	G1/8	8	24	12	10
PCF-G 0402N	4	10.6	G1/4	9	25	17	10
PCF-G 0601N	6	12.4	G1/8	8	24.4	14	10
PCF-G 0602N	6	12.4	G1/4	9	25.4	17	10
PCF-G 0603N	6	12.4	G3/8	10	26.4	19	10
PCF-G 0801N	8	13.8	G1/8	8	25.7	14	10
PCF-G 0802N	8	14.6	G1/4	9	26.7	17	10
PCF-G 0803N	8	14.6	G3/8	10	27.7	19	10
PCF-G 0804N	8	14.6	G1/2	13	30.7	24	10
PCF-G 1001N	10	16.8	G1/8	8	28.3	17	10
PCF-G 1002N	10	16.8	G1/4	9	29.3	17	10
PCF-G 1003N	10	17.6	G3/8	10	30.3	19	10
PCF-G 1004N	10	17.6	G1/2	13	33.3	24	10
PCF-G 1202N	12	19.6	G1/4	9	31.4	21	10
PCF-G 1203N	12	19.6	G3/8	10	32.4	21	10
PCF-G 1204N	12	19.6	G1/2	13	35.4	24	10

PMF

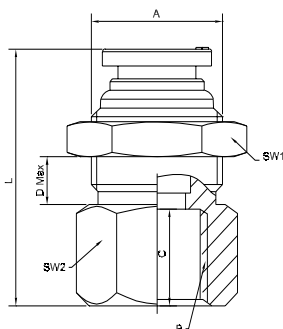
BULKHEAD FEMALE UNION TAPER / **TRAVERSÉE FEMELLE CONIQUE** / *PASSAPARETE FEMMINA CONICO*



CODE	tube Ø	A	B	C	D	L	SW1	SW2	min.pcs.
PMF 0401N	4	M12x1	R1/8	9.5	4.5	26	14	14	10
PMF 0402N	4	M12x1	R1/4	11	4.5	27.5	14	17	10
PMF 0601N	6	M14x1	R1/8	9.5	6	26.9	17	17	10
PMF 0602N	6	M14x1	R1/4	11	6	29.9	17	17	10
PMF 0603N	6	M14x1	R3/8	12	6	30.9	17	19	10
PMF 0801N	8	M16x1	R1/8	9.5	6	27.2	19	17	10
PMF 0802N	8	M16x1	R1/4	11	6	29.2	19	17	10
PMF 0803N	8	M16x1	R3/8	12	6	31.2	19	19	10
PMF 0804N	8	M16x1	R1/2	15	6	34.2	19	24	10
PMF 1001N	10	M18x1	R1/8	9.5	10.5	30.6	21	19	10
PMF 1002N	10	M18x1	R1/4	11	10.5	32.6	21	19	10
PMF 1003N	10	M18x1	R3/8	12	10.5	35.1	21	19	10
PMF 1004N	10	M18x1	R1/2	15	10.5	38.6	21	24	10
PMF 1202N	12	M22x1	R1/4	11	12	33.5	24	24	10
PMF 1203N	12	M22x1	R3/8	12	12	34.5	24	24	10
PMF 1204N	12	M22x1	R1/2	15	12	40	24	24	10

PMF-G

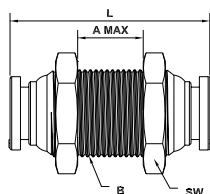
BULKHEAD FEMALE UNION PARALLEL / TRAVERSÉE FEMELLE CYLINDRIQUE / PASSAPARETE FEMMINA CILINDRICO



CODE	tube Ø	A	B	C	D	L	SW1	SW2	min.pcs.
PMF-G 0401N	4	M12x1	G1/8	8	4.5	24.5	14	14	10
PMF-G 0402N	4	M12x1	G1/4	9	4.5	25.5	14	17	10
PMF-G 0601N	6	M14x1	G1/8	8	6	25.4	17	17	10
PMF-G 0602N	6	M14x1	G1/4	9	6	27.9	17	17	10
PMF-G 0603N	6	M14x1	G3/8	10	6	28.9	17	19	10
PMF-G 0801N	8	M16x1	G1/8	8	6	25.7	19	17	10
PMF-G 0802N	8	M16x1	G1/4	9	6	27.2	19	17	10
PMF-G 0803N	8	M16x1	G3/8	10	6	29.2	19	19	10
PMF-G 0804N	8	M16x1	G1/2	13	6	32.2	19	24	10
PMF-G 1001N	10	M18x1	G1/8	8	10.5	29.1	21	19	10
PMF-G 1002N	10	M18x1	G1/4	9	10.5	30.6	21	19	10
PMF-G 1003N	10	M18x1	G3/8	10	10.5	33.1	21	19	10
PMF-G 1004N	10	M18x1	G1/2	13	10.5	26.6	21	24	10
PMF-G 1202N	12	M22x1	G1/4	9	12	33.5	24	24	10
PMF-G 1203N	12	M22x1	G3/8	10	12	32.5	24	24	10
PMF-G 1204N	12	M22x1	G1/2	13	12	38	24	24	10

PMM

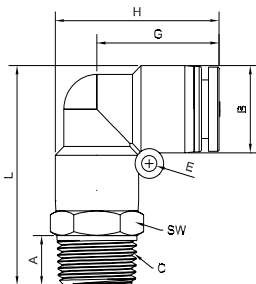
BULKHEAD UNION / TRAVERSÉE DE CLOISON / PASSAPARETE



CODE	tube Ø	A (max)	L	B	SW	min.pcs.
PMM 0400N	4	13	33	M12x1	14	10
PMM 0600N	6	13	34.8	M14x1	17	10
PMM 0800N	8	15	37	M16x1	19	10
PMM 1000N	10	18	41.2	M18x1	21	10
PMM 1200N	12	22	47.2	M22x1	24	10

PL

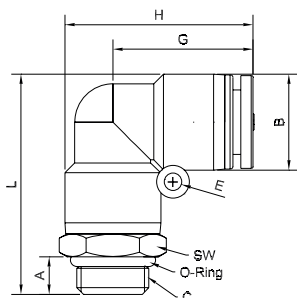
ELBOW CONNECTOR TAPER / ÉQUERRE MALE CONIQUE / GOMITO MASCHIO CONICO



CODE	tube Ø	A	B	C	E	G	H	L	SW	min.pcs.
PL 0401N	4	7.5	11	R1/8	3.2	17.8	21.5	28.7	10	10
PL 0402N	4	9	11	R1/4	3.2	17.8	21.5	30.2	14	10
PL 0601N	6	7.5	13	R1/8	3.2	20.9	25.5	32.2	12	10
PL 0602N	6	9	13	R1/4	3.2	20.9	25.5	33.7	14	10
PL 0603N	6	10	13	R3/8	3.2	20.9	25.5	35.7	17	10
PL 0801N	8	7.5	14.6	R1/8	3.2	23.4	30.7	37.4	14	10
PL 0802N	8	9	14.6	R1/4	3.2	23.4	30.7	38.9	14	10
PL 0803N	8	10	14.6	R3/8	3.2	23.4	30.7	40.9	17	10
PL 0804N	8	13	14.6	R1/2	3.2	23.4	30.7	43.9	21	10
PL 1001N	10	7.5	17.6	R1/8	3.2	25.7	34.5	40.9	17	10
PL 1002N	10	9	17.6	R1/4	3.2	25.7	34.5	42.3	17	10
PL 1003N	10	10	17.6	R3/8	3.2	25.7	34.5	44.3	17	10
PL 1004N	10	13	17.6	R1/2	3.2	25.7	34.5	47.3	21	10
PL 1202N	12	9	21	R1/4	3.2	29	39.5	47.1	19	10
PL 1203N	12	10	21	R3/8	3.2	29	39.5	49.6	19	10
PL 1204N	12	13	21	R1/2	3.2	29	39.5	52.6	21	10
PL 1602N	16	9	26	R1/4	4.2	34.5	47.5	56.7	24	10
PL 1603N	16	10	26	R3/8	4.2	34.5	47.5	57.7	24	10
PL 1604N	16	13	26	R1/2	4.2	34.5	47.5	60.7	24	10

PL-G

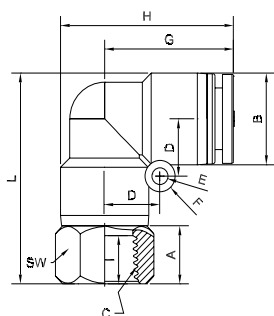
ELBOW CONNECTOR PARALLEL / ÉQUERRE MALE CYLINDRIQUE / GOMITO MASCHIO CILINDRICO



CODE	tube Ø	A	B	C	E	G	H	L	SW	min.pcs.
PL-G 04M5N	4	3.5	-	M5	3.2	17.8	-	-	10	10
PL-G 0401N	4	5.5	11	G1/8	3.2	17.8	21.5	26.7	14	10
PL-G 0402N	4	6.9	11	G1/4	3.2	17.8	21.5	28.2	17	10
PL-G 06M5N	6	3.5	-	M5	3.2	20.9	-	-	12	10
PL-G 0601N	6	5.5	13	G1/8	3.2	20.9	25.5	30.2	14	10
PL-G 0602N	6	6.9	13	G1/4	3.2	20.9	25.5	31.6	17	10
PL-G 0603N	6	8.2	13	G3/8	3.2	20.9	25.5	33.9	19	10
PL-G 0801N	8	5.5	14.6	G1/8	3.2	23.4	30.7	35.4	14	10
PL-G 0802N	8	6.9	14.6	G1/4	3.2	23.4	30.7	36.9	17	10
PL-G 0803N	8	8.2	14.6	G3/8	3.2	23.4	30.7	39.1	19	10
PL-G 0804N	8	9.2	14.6	G1/2	3.2	23.4	30.7	40.1	24	10
PL-G 1001N	10	5.5	17.6	G1/8	3.2	25.7	34.5	38.8	17	10
PL-G 1002N	10	6.9	17.6	G1/4	3.2	25.7	34.5	40.4	17	10
PL-G 1003N	10	8.2	17.6	G3/8	3.2	25.7	34.5	42.4	19	10
PL-G 1004N	10	9.2	17.6	G1/2	3.2	25.7	34.5	43.5	24	10
PL-G 1202N	12	6.9	21	G1/4	3.2	29	39.5	45	19	10
PL-G 1203N	12	8.2	21	G3/8	3.2	29	39.5	47.6	19	10
PL-G 1204N	12	9.2	21	G1/2	3.2	29	39.5	48.6	24	10
PL-G 1603N	16	8.2	26	G3/8	4.2	34.5	47.5	55.4	24	10
PL-G 1604N	16	9.2	26	G1/2	4.2	34.5	47.5	56.4	24	10

PLF

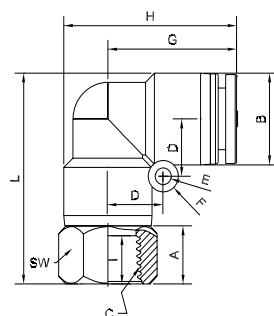
ELBOW FEMALE CONNECTOR TAPER / ÉQUERRE FEMELLE CONIQUE / GOMITO FEMMINA CONICO



CODE	tube Ø	A	B	C	G	H	L	I	SW	min.pcs.
PLF 0401N	4	11.5	11	R1/8	17.8	21.5	28.7	9.5	12	10
PLF 0402N	4	13	11	R1/4	17.8	21.5	30.2	11	17	10
PLF 0601N	6	10.5	13	R1/8	20.9	25.5	31.2	9.5	12	10
PLF 0602N	6	13	13	R1/4	20.9	25.5	33.7	11	17	10
PLF 0603N	6	14	13	R3/8	20.9	25.5	34.7	12	19	10
PLF 0801N	8	10.5	14.6	R1/8	23.4	30.7	36.4	9.5	14	10
PLF 0802N	8	12.5	14.6	R1/4	23.4	30.7	38.4	11	17	10
PLF 0803N	8	14	14.6	R3/8	23.4	30.7	39.9	12	19	10
PLF 0804N	8	17	14.6	R1/2	23.4	30.7	42.9	15	24	10
PLF 1001N	10	6.1	17.6	R1/8	25.7	34.5	35.4	9.5	17	10
PLF 1002N	10	11.1	17.6	R1/4	25.7	34.5	40.4	11	17	10
PLF 1003N	10	13.6	17.6	R3/8	25.7	34.5	42.9	12	19	10
PLF 1004N	10	17.1	17.6	R1/2	25.7	34.5	46.4	15	24	10
PLF 1202N	12	6	21	R1/4	29	39.5	40.1	11	19	10
PLF 1203N	12	12.5	21	R3/8	29	39.5	46.6	12	19	10
PLF 1204N	12	17	21	R1/2	29	39.5	51.1	15	24	10

PLF-G

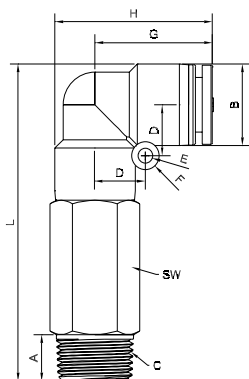
ELBOW FEMALE CONNECTOR PARALLEL / ÉQUERRE FEMELLE CYLINDRIQUE / GOMITO FEMMINA CILINDRICO



CODE	tube Ø	A	B	C	G	H	L	I	SW	min.pcs.
PLF-G 0401N	4	10	11	G1/8	17.8	21.5	27.2	8	12	10
PLF-G 0402N	4	11	11	G1/4	17.8	21.5	28.2	9	17	10
PLF-G 0601N	6	9	13	G1/8	20.9	25.5	29.4	8	12	10
PLF-G 0602N	6	11	13	G1/4	20.9	25.5	31.7	9	17	10
PLF-G 0603N	6	12	13	G3/8	20.9	25.5	32.7	10	19	10
PLF-G 0801N	8	9	14.6	G1/8	23.4	30.7	34.9	8	14	10
PLF-G 0802N	8	10.5	14.6	G1/4	23.4	30.7	36.4	9	17	10
PLF-G 0803N	8	12	14.6	G3/8	23.4	30.7	37.9	10	19	10
PLF-G 0804N	8	15	14.6	G1/2	23.4	30.7	40.9	13	24	10
PLF-G 1001N	10	6.1	17.6	G1/8	25.7	34.5	35.4	8	17	10
PLF-G 1002N	10	9.1	17.6	G1/4	25.7	34.5	38.4	9	17	10
PLF-G 1003N	10	11.6	17.6	G3/8	25.7	34.5	40.9	10	19	10
PLF-G 1004N	10	15.1	17.6	G1/2	25.7	34.5	44.4	13	24	10
PLF-G 1202N	12	6	21	G1/4	29	39.5	40.1	9	19	10
PLF-G 1203N	12	10.5	21	G3/8	29	39.5	46.6	10	19	10
PLF-G 1204N	12	15	21	G1/2	29	39.5	51.1	13	24	10

PLL

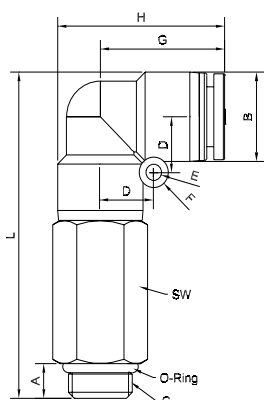
ELBOW CONNECTOR LONG TAPER / *ÉQUERRE LONGUE MALE CONIQUE* / *GOMITO LUNGO MASCHIO CONICO*



CODE	tube Ø	A	C	E	G	H	L	SW	min.pcs.
PLL 0401N	4	7.5	R1/8	3.2	17.8	21.5	43.7	10	10
PLL 0402N	4	9	R1/4	3.2	17.8	21.5	45.2	14	10
PLL 0601N	6	7.5	R1/8	3.2	20.9	25.5	48.2	12	10
PLL 0602N	6	9	R1/4	3.2	20.9	25.5	49.7	14	10
PLL 0603N	6	10	R3/8	3.2	20.9	25.5	51.7	17	10
PLL 0801N	8	7.5	R1/8	3.2	23.4	30.7	56.4	14	10
PLL 0802N	8	9	R1/4	3.2	23.4	30.7	57.9	14	10
PLL 0803N	8	10	R3/8	3.2	23.4	30.7	59.9	17	10
PLL 0804N	8	13	R1/2	3.2	23.4	30.7	62.9	21	10
PLL 1001N	10	7.5	R1/8	3.2	25.7	34.5	64.9	17	10
PLL 1002N	10	9	R1/4	3.2	25.7	34.5	66.3	17	10
PLL 1003N	10	10	R3/8	3.2	25.7	34.5	68.3	17	10
PLL 1004N	10	13	R1/2	3.2	25.7	34.5	71.3	21	10
PLL 1202N	12	9	R1/4	3.2	29	39.5	71.1	19	10
PLL 1203N	12	10	R3/8	3.2	29	39.5	73.6	19	10
PLL 1204N	12	13	R1/2	3.2	29	39.5	76.6	21	10

PLL-G

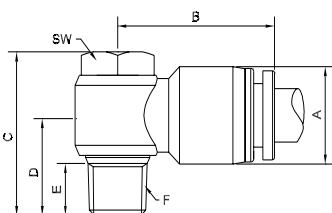
ELBOW CONNECTOR LONG PARALLEL / *ÉQUERRE LONGUE MALE CYLINDRIQUE* / *GOMITO LUNGO MASCHIO CILINDRICO*



CODE	tube Ø	A	B	C	E	G	H	L	SW	min.pcs.
PLL-G 0401N	4	5.5	11	G1/8	3.2	17.8	21.5	41.7	14	10
PLL-G 0402N	4	6.9	11	G1/4	3.2	17.8	21.5	43.2	17	10
PLL-G 0601N	6	5.5	13	G1/8	3.2	20.9	25.5	46.2	14	10
PLL-G 0602N	6	6.9	13	G1/4	3.2	20.9	25.5	47.6	17	10
PLL-G 0603N	6	8.2	13	G3/8	3.2	20.9	25.5	49.9	19	10
PLL-G 0801N	8	5.5	14.6	G1/8	3.2	23.4	30.7	54.4	14	10
PLL-G 0802N	8	6.9	14.6	G1/4	3.2	23.4	30.7	55.9	17	10
PLL-G 0803N	8	8.2	14.6	G3/8	3.2	23.4	30.7	58.1	19	10
PLL-G 0804N	8	9.2	14.6	G1/2	3.2	23.4	30.7	59.1	24	10
PLL-G 1001N	10	5.5	17.6	G1/8	3.2	25.7	34.5	62.8	17	10
PLL-G 1002N	10	6.9	17.6	G1/4	3.2	25.7	34.5	64.4	17	10
PLL-G 1003N	10	8.2	17.6	G3/8	3.2	25.7	34.5	66.4	19	10
PLL-G 1004N	10	9.2	17.6	G1/2	3.2	25.7	34.5	67.5	24	10
PLL-G 1202N	12	6.9	21	G1/4	3.2	29	39.5	69	19	10
PLL-G 1203N	12	8.2	21	G3/8	3.2	29	39.5	71.6	19	10
PLL-G 1204N	12	9.2	21	G1/2	3.2	29	39.5	72.6	24	10

PH

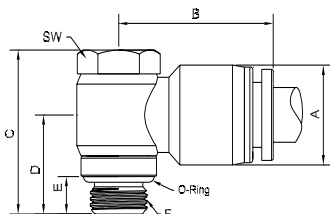
COMPLETE SINGLE BANJO TAPER / *ÉQUERRE MALE CONIQUE ORIENTABLE* / *GOMITO GIREVOLE MASCHIO CONICO*



CODE	tube Ø	A	B	C	D	E	F	SW	min.pcs.
PH 0401N	4	11	23	24.5	15	7.8	R1/8	12	10
PH 0402N	4	11	24.6	26.6	20.7	10.5	R1/4	15	10
PH 0601N	6	13	24.5	24.5	15	7.8	R1/8	12	10
PH 0602N	6	13	26.2	26.6	20.7	10.8	R1/4	15	10
PH 0603N	6	13	28.6	33.5	20.5	11.7	R3/8	19	10
PH 0801N	8	14.6	25.8	24.5	15	7.8	R1/8	12	10
PH 0802N	8	14.6	27.5	26.6	20.7	10.8	R1/4	15	10
PH 0803N	8	14.6	30.2	33.5	20.5	11.7	R3/8	19	10
PH 0804N	8	21	36.5	40.2	25.4	15.7	R1/2	24	10
PH 1002N	10	17.6	29.2	26.6	20.7	10.8	R1/4	15	10
PH 1003N	10	17.6	30.7	33.5	20.5	11.7	R3/8	19	10
PH 1004N	10	21	36.5	40.2	25.4	15.7	R1/2	24	10
PH 1202N	12	21	33.6	26.6	20.7	10.8	R1/4	12	10
PH 1203N	12	21	34.5	33.5	20.5	11.7	R3/8	19	10
PH 1204N	12	21	36.5	40.2	25.4	15.7	R1/2	24	10

PH-G

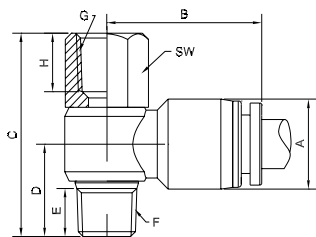
COMPLETE SINGLE BANJO PARALLEL / ÉQUERRE MALE CYLINDRIQUE ORIENTABLE / GOMITO GIREVOLE MASCHIO CILINDRICO



CODE	tube Ø	A	B	C	D	E	F	SW	min.pcs.
PH-G 04M5N	4	11	27.1	19.9	12.2	3.5	M5	8	10
PH-G 0401N	4	11	23	24	15	5.5	G1/8	12	10
PH-G 0402N	4	11	24.6	27.1	20.7	6.9	G1/4	15	10
PH-G 06M5N	6	13	24.5	19.9	12.2	3.5	M5	8	10
PH-G 0601N	6	13	24.5	24	15	5.5	G1/8	12	10
PH-G 0602N	6	13	26.2	27.1	20.7	6.9	G1/4	15	10
PH-G 0603N	6	13	28.6	31.7	20.5	8.2	G3/8	19	10
PH-G 0801N	8	14.6	25.8	24	15	5.5	G1/8	12	10
PH-G 0802N	8	14.6	27.5	27.1	20.7	6.9	G1/4	15	10
PH-G 0803N	8	14.6	30.2	31.7	20.5	8.2	G3/8	19	10
PH-G 0804N	8	21	36.5	35	25.4	9.2	G1/2	24	10
PH-G 1002N	10	17.6	29.2	27.1	20.7	6.9	G1/4	15	10
PH-G 1003N	10	17.6	30.7	31.7	20.5	8.2	G3/8	19	10
PH-G 1004N	10	21	36.5	35	25.4	9.2	G1/2	24	10
PH-G 1202N	12	21	33.6	27.1	20.7	6.9	G1/4	12	10
PH-G 1203N	12	21	34.5	31.7	20.5	8.2	G3/8	19	10
PH-G 1204N	12	21	36.5	35	25.4	9.2	G1/2	24	10

PHF

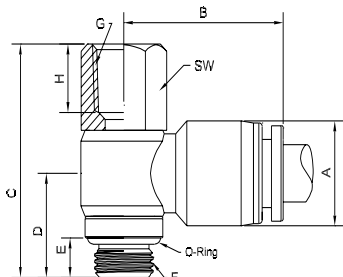
COMPLETE SINGLE FEMALE BANJO TAPER / ÉQUERRE ORIENTABLE CONIQUE FEMELLE / GOMITO GIREVOLE FEMMINA CONICO



CODE	tube Ø	A	B	C	D	E	F	SW	G	H	min.pcs.
PHF 0401N	4	11	23	33	15	7.8	R1/8	12	R1/8	9.5	10
PHF 0402N	4	11	24.6	34	19.2	9	R1/4	17	R1/4	11	10
PHF 0601N	6	13	24.5	33	15	7.8	R1/8	12	R1/8	9.5	10
PHF 0602N	6	13	26.2	34	18.9	9	R1/4	17	R1/4	11	10
PHF 0603N	6	13	28.6	43.1	20.5	11.7	R3/8	19	R3/8	12	10
PHF 0801N	8	14.6	25.8	33	15	7.8	R1/8	12	R1/8	9.5	10
PHF 0802N	8	14.6	27.5	34	18.9	9	R1/4	17	R1/4	11	10
PHF 0803N	8	14.6	30.2	43.1	20.5	11.7	R3/8	19	R3/8	12	10
PHF 0804N	8	21	36.5	49.3	22.7	13	R1/2	24	R1/2	15	10
PHF 1002N	10	17.6	29.2	34	18.9	9	R1/4	17	R1/4	11	10
PHF 1003N	10	17.6	30.7	43.1	20.5	11.7	R3/8	19	R3/8	12	10
PHF 1004N	10	21	36.5	49.3	22.7	13	R1/2	24	R1/2	15	10
PHF 1203N	12	21	34.5	43.1	20.5	11.7	R3/8	19	R3/8	12	10
PHF 1204N	12	21	36.5	49.3	22.7	13	R1/2	24	R1/2	15	10

PHF-G

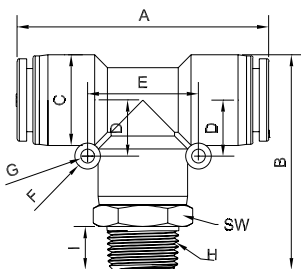
COMPLETE SINGLE FEMALE BANJO PARALLEL / ÉQUERRE ORIENTABLE CYLINDRIQUE FEMELLE / GOMITO GIREVOLE FEMMINA CILINDRICO



CODE	tube Ø	A	B	C	D	E	F	SW	G	H	min.pcs.
PHF-G 04M5N	4	11	21	24.9	12.2	3.5	M5	8	M5	7	10
PHF-G 0401N	4	11	23	31.5	15	5.5	G1/8	12	G1/8	8	10
PHF-G 0402N	4	11	24.6	32	19.2	6.9	G1/4	17	G1/4	9	10
PHF-G 06M5N	6	13	22.6	24.9	12.2	3.5	M5	8	M5	7	10
PHF-G 0601N	6	13	24.5	31.5	15	5.5	G1/8	12	G1/8	8	10
PHF-G 0602N	6	13	26.2	32	18.9	6.9	G1/4	17	G1/4	9	10
PHF-G 0603N	6	13	28.6	41.1	20.5	8.2	G3/8	19	G3/8	10	10
PHF-G 0801N	8	14.6	25.8	31.5	15	5.5	G1/8	12	G1/8	8	10
PHF-G 0802N	8	14.6	27.5	32	18.9	6.9	G1/4	17	G1/4	9	10
PHF-G 0803N	8	14.6	30.2	41.1	20.5	8.2	G3/8	19	G3/8	10	10
PHF-G 0804N	8	21	36.5	47.3	22.7	9.2	G1/2	24	G1/2	13	10
PHF-G 1002N	10	17.6	29.2	32	18.9	6.9	G1/4	17	G1/4	9	10
PHF-G 1003N	10	17.6	30.7	41.7	20.5	8.2	G3/8	19	G3/8	10	10
PHF-G 1004N	10	21	36.5	47.3	22.7	9.2	G1/2	24	G1/2	13	10
PHF-G 1203N	12	21	34.5	41.1	20.5	8.2	G3/8	19	G3/8	10	10
PHF-G 1204N	12	21	36.5	47.3	22.7	9.2	G1/2	24	G1/2	13	10

PT

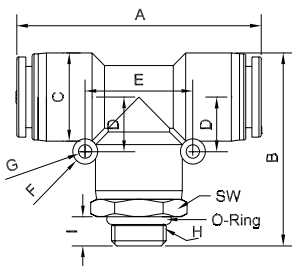
ROTARY TEE ADAPTOR TAPER / T MALE CONIQUE ORIENTABLE / T GIREVOLE MASCHIO CONICO



CODE	tube Ø	A	B	C	E	G	H	I	SW	min.pcs.
PT 0401N	4	35.6	28.7	11	16	3.2	R1/8	7.5	10	10
PT 0402N	4	35.6	30.2	11	16	3.2	R1/4	9	14	10
PT 0601N	6	41.8	32.2	13	18	3.2	R1/8	7.5	12	10
PT 0602N	6	41.8	33.7	13	18	3.2	R1/4	9	14	10
PT 0603N	6	41.8	35.7	13	18	3.2	R3/8	10	17	10
PT 0801N	8	46.8	37.4	14.6	20	3.2	R1/8	7.5	14	10
PT 0802N	8	46.8	38.9	14.6	20	3.2	R1/4	9	14	10
PT 0803N	8	46.8	40.9	14.6	20	3.2	R3/8	10	17	10
PT 0804N	8	46.8	43.9	14.6	20	3.2	R1/2	13	21	10
PT 1001N	10	51.4	40.9	17.6	22	3.2	R1/8	7.5	17	10
PT 1002N	10	52.4	42.3	17.6	22	3.2	R1/4	9	17	10
PT 1003N	10	53.4	44.3	17.6	22	3.2	R3/8	10	17	10
PT 1004N	10	54.4	47.3	17.6	22	3.2	R1/2	13	21	10
PT 1202N	12	58	47.1	21	25.5	3.2	R1/4	9	19	10
PT 1203N	12	58	49.6	21	25.5	3.2	R3/8	10	19	10
PT 1204N	12	58	52.6	21	25.5	3.2	R1/2	13	21	10
PT 1603N	16	69	57.7	26	30	4.2	R3/8	10	24	10
PT 1604N	16	69	60.7	26	30	4.2	R1/2	13	24	10

PT-G

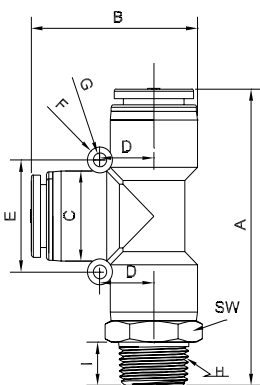
ROTARY TEE ADAPTOR PARALLEL / T MALE CYLINDRIQUE ORIENTABLE / T GIREVOLE MASCHIO CILINDRICO



CODE	tube Ø	A	B	C	E	G	H	I	SW	min.pcs.
PT-G 04M5N	4	35.6	24.7	11	16	3.2	M5	3.5	10	10
PT-G 0401N	4	35.6	26.7	11	16	3.2	G1/8	5.5	14	10
PT-G 0402N	4	35.6	28.2	11	16	3.2	G1/4	6.9	17	10
PT-G 06M5N	6	41.8	28.2	13	18	3.2	M5	3.5	12	10
PT-G 0601N	6	41.8	30.2	13	18	3.2	G1/8	5.5	14	10
PT-G 0602N	6	41.8	31.6	13	18	3.2	G1/4	6.9	17	10
PT-G 0603N	6	41.8	33.9	13	18	3.2	G3/8	8.2	19	10
PT-G 0801N	8	46.8	35.4	14.6	20	3.2	G1/8	5.5	14	10
PT-G 0802N	8	46.8	36.9	14.6	20	3.2	G1/4	6.9	17	10
PT-G 0803N	8	46.8	39.1	14.6	20	3.2	G3/8	8.2	19	10
PT-G 0804N	8	46.8	40.1	14.6	20	3.2	G1/2	9.2	24	10
PT-G 1001N	10	51.4	38.8	17.6	22	3.2	G1/8	5.5	17	10
PT-G 1002N	10	52.4	40.4	17.6	22	3.2	G1/4	6.9	17	10
PT-G 1003N	10	53.4	42.4	17.6	22	3.2	G3/8	8.2	19	10
PT-G 1004N	10	54.4	43.5	17.6	22	3.2	G1/2	9.2	24	10
PT-G 1202N	12	58	45	21	25.5	3.2	G1/4	6.9	19	10
PT-G 1203N	12	58	47.6	21	25.5	3.2	G3/8	8.2	19	10
PT-G 1204N	12	58	48.6	21	25.5	3.2	G1/2	9.2	24	10
PT-G 1603N	16	69	55.4	26	30	4.2	G3/8	8.2	24	10
PT-G 1604N	16	69	56.4	30	4.2	4.2	G1/2	9.2	24	10

PST

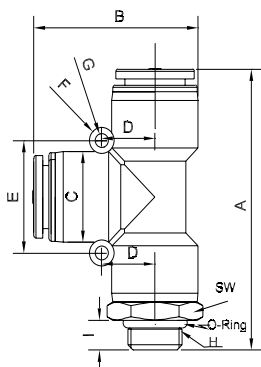
ROTARY TEE LATERAL ADAPTOR TAPER / T PIQUAGE LATÉRAL MÂLE CONIQUE / T MASCHIO LATERALE CONICO



CODE	tube Ø	A	B	C	E	G	H	I	SW	min.pcs.
PST 0401N	4	42.8	21.5	11	16	3.2	R1/8	7.5	10	10
PST 0402N	4	44.3	21.5	11	16	3.2	R1/4	9	14	10
PST 0601N	6	48.5	25.5	13	18	3.2	R1/8	7.5	12	10
PST 0602N	6	50	25.5	13	18	3.2	R1/4	9	14	10
PST 0603N	6	52	25.5	13	18	3.2	R3/8	10	17	10
PST 0801N	8	53.5	30.7	14.6	20	3.2	R1/8	7.5	14	10
PST 0802N	8	55	30.7	14.6	20	3.2	R1/4	9	14	10
PST 0803N	8	57	30.7	14.6	20	3.2	R3/8	10	17	10
PST 0804N	8	60	30.7	14.6	20	3.2	R1/2	13	21	10
PST 1001N	10	57.8	34.5	17.6	22	3.2	R1/8	7.5	17	10
PST 1002N	10	59.2	34.5	17.6	22	3.2	R1/4	9	17	10
PST 1003N	10	61.2	34.5	17.6	22	3.2	R3/8	10	17	10
PST 1004N	10	64.2	34.5	17.6	22	3.2	R1/2	13	21	10
PST 1202N	12	65.6	39.5	21	25.5	3.2	R1/4	9	19	10
PST 1203N	12	68.1	39.5	21	25.5	3.2	R3/8	10	19	10
PST 1204N	12	71.1	39.5	21	25.5	3.2	R1/2	13	21	10
PST 1603N	16	79.2	47.5	26	30	4.2	R3/8	10	24	10
PST 1604N	16	82.2	47.5	26	30	4.2	R1/2	13	24	10

PST-G

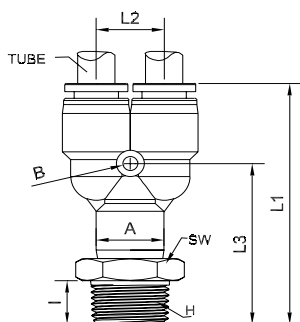
ROTARY TEE LATERAL ADAPTOR PARALLEL / T PLOUAGE LATÉRAL MÂLE CYLINDRIQUE / T MASCHIO LATERALE CILINDRICO



CODE	tube Ø	A	B	C	E	G	H	I	SW	min.pcs.
PST-G 04M5N	4	38.8	21.5	11	16	3.2	M5	3.5	10	10
PST-G 0401N	4	40.8	21.5	11	16	3.2	G1/8	5.5	14	10
PST-G 0402N	4	42.3	21.5	11	16	3.2	G1/4	6.9	17	10
PST-G 06M5N	6	44.5	25.5	13	18	3.2	M5	3.5	12	10
PST-G 0601N	6	46.5	25.5	13	18	3.2	G1/8	5.5	14	10
PST-G 0602N	6	47.9	25.5	13	18	3.2	G1/4	6.9	17	10
PST-G 0603N	6	50.2	25.5	13	18	3.2	G3/8	8.2	19	10
PST-G 0801N	8	51.5	30.7	14.6	20	3.2	G1/8	5.5	14	10
PST-G 0802N	8	53	30.7	14.6	20	3.2	G1/4	6.9	17	10
PST-G 0803N	8	55.2	30.7	14.6	20	3.2	G3/8	8.2	19	10
PST-G 0804N	8	56.2	30.7	14.6	20	3.2	G1/2	9.2	24	10
PST-G 1001N	10	55.7	34.5	17.6	22	3.2	G1/8	5.5	17	10
PST-G 1002N	10	58.3	34.5	17.6	22	3.2	G1/4	6.9	17	10
PST-G 1003N	10	61.3	34.5	17.5	22	3.2	G3/8	8.2	19	10
PST-G 1004N	10	63.4	34.5	17.6	22	3.2	G1/2	9.2	24	10
PST-G 1202N	12	63.5	39.5	21	25.5	3.2	G1/4	6.9	19	10
PST-G 1203N	12	66.1	39.5	21	25.5	3.2	G3/8	8.2	19	10
PST-G 1204N	12	67.1	39.5	21	25.5	3.2	G1/2	9.2	24	10
PST-G 1603N	16	76.9	47.5	26	30	4.2	G3/8	9.2	24	10
PST-G 1604N	16	77.9	47.5	26	30	4.2	G1/2	10	24	10

PWT

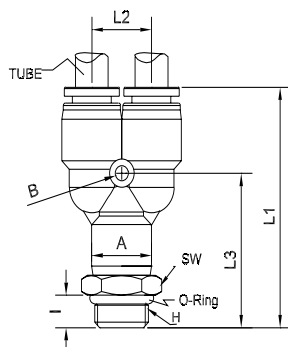
Y ADAPTOR TAPER / Y MALE CONIQUE / Y MASCHIO CONICO



CODE	tube Ø	A	B	L1	L2	L3	I	H	SW	min.pcs.
PWT 0401N	4	10.9	3.2	41.8	11	27.2	R1/8	7.5	10	10
PWT 0402N	4	10.9	3.2	43.3	11	28.7	R1/4	9	14	10
PWT 0601N	6	12.9	3.2	42.8	13.2	42.8	R1/8	7.5	12	10
PWT 0602N	6	12.9	3.2	44.2	13.2	31.5	R1/4	9	14	10
PWT 0603N	6	12.9	3.2	46.2	13.2	33.5	R3/8	10	17	10
PWT 0801N	8	14.7	3.2	51.7	14.6	33.4	R1/8	7.5	14	10
PWT 0802N	8	14.7	3.2	53	14.6	34.7	R1/4	9	14	10
PWT 0803N	8	14.7	3.2	55	14.6	36.7	R3/8	10	17	10
PWT 0804N	8	14.7	3.2	58	14.6	39.7	R1/8	13	21	10
PWT 1002N	10	18	3.2	56.3	17.6	35.3	R1/4	9	17	10
PWT 1003N	10	18	3.2	58.3	17.6	37.3	R3/8	10	17	10
PWT 1004N	10	18	3.2	61.3	17.6	40.3	R1/2	13	21	10
PWT 1202N	12	21	3.2	62.7	21	41.3	R1/4	9	19	10
PWT 1203N	12	21	3.2	64.7	21	43.3	R3/8	10	19	10
PWT 1204N	12	21	3.2	67.7	21	46.3	R1/2	13	21	10
PWT 1603N	16	26	4.2	69.8	26	47	R3/8	10	24	10
PWT 1604N	16	26	4.2	72.8	26	50	R1/2	13	24	10

PWT-G

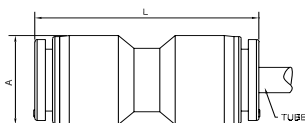
Y ADAPTOR PARALLEL / Y MALE CYLINDRIQUE / Y MASCHIO CILINDRICO



CODE	tube Ø	A	B	L1	L2	L3	I	H	SW	min.pcs.
PWT-G 04M5N	4	10.9	3.2	37.8	11	23.2	3.5	M5	10	10
PWT-G 0401N	4	10.9	3.2	39.8	11	25.2	5.5	G1/8	14	10
PWT-G 0402N	4	10.9	3.2	41.3	11	26.7	6.9	G1/4	17	10
PWT-G 06M5N	6	12.9	3.2	38.7	13.2	26	3.5	M5	12	10
PWT-G 0601N	6	12.9	3.2	40.7	13.2	28	5.5	G1/8	14	10
PWT-G 0602N	6	12.9	3.2	42.1	13.2	29.4	6.9	G1/4	17	10
PWT-G 0603N	6	12.9	3.2	44.4	13.2	31.7	8.2	G3/8	19	10
PWT-G 0801N	8	14.7	3.2	49.5	14.6	31.2	5.5	G1/8	14	10
PWT-G 0802N	8	14.7	3.2	51	14.6	32.7	6.9	G1/4	17	10
PWT-G 0803N	8	14.7	3.2	53.2	14.6	34.9	8.2	G3/8	19	10
PWT-G 0804N	8	14.7	3.2	54.2	14.6	35.9	9.2	G1/2	24	10
PWT-G 1001N	10	18	3.2	52.8	17.6	31.8	5.5	G1/8	17	10
PWT-G 1002N	10	18	3.2	54.4	17.6	33.4	6.9	G1/4	17	10
PWT-G 1003N	10	18	3.2	56.4	17.6	35.4	8.2	G3/8	19	10
PWT-G 1004N	10	18	3.2	57.5	17.6	36.5	9.2	G1/2	24	10
PWT-G 1202N	12	21	3.2	60.6	21	39.2	6.9	G1/4	19	10
PWT-G 1203N	12	21	3.2	63.2	21	41.8	8.2	G3/8	19	10
PWT-G 1204N	12	21	3.2	64.2	21	42.8	9.2	G1/2	24	10
PWT-G 1603N	16	26	4.2	67.5	26	44.7	9.2	G3/8	24	10
PWT-G 1604N	16	26	4.2	68.5	26	45.7	10	G1/2	24	10

PUC

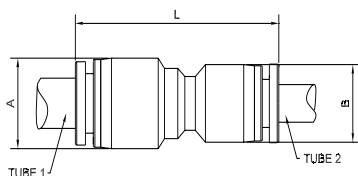
UNION CONNECTOR / **DROIT DOUBLE** / *INTERMEDIO DIRITTO*



CODE	tube Ø	A	L	min.pcs.
PUC 0400N	4	10.9	33.5	10
PUC 0600N	6	12.9	34.6	10
PUC 0800N	8	14.7	39	10
PUC 1000N	10	18	43.3	10
PUC 1200N	12	21	46.3	10
PUC 1600N	16	26	55.6	10

PG

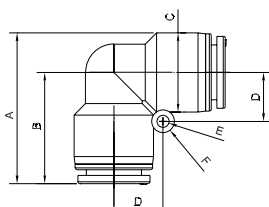
REDUCED UNION CONNECTOR / **DROIT DOUBLE RÉDUCTION** / *INTERMEDIO DIRITTO CON RIDUZIONE*



CODE	tube 1 Ø	tube 2 Ø	A	B	L	min.pcs.
PG 0604N	6	4	12.9	10.9	35.6	10
PG 0806N	8	6	14.7	12.9	38.5	10
PG 1008N	10	8	18	14.7	41.9	10
PG 1210N	12	10	21	18	46	10

PUL

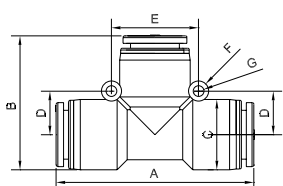
ELBOW CONNECTOR / **ÉQUERRE** / *INTERMEDIO A L*



CODE	tube Ø	A	B	C	D	E	min.pcs.
PUL 0400N	4	21.5	17.8	11	8	3.2	10
PUL 0600N	6	25.5	20.9	13	9	3.2	10
PUL 0800N	8	30.7	23.4	14.6	10	3.2	10
PUL 1000N	10	34.5	25.7	17.6	11	3.2	10
PUL 1200N	12	39.5	29	21	12.7	3.2	10
PUL 1600N	16	47.5	34.5	26	15	4.2	10

PUT

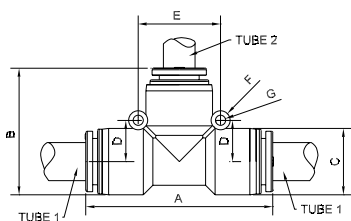
TEE CONNECTOR / **T** / *INTERMEDIO AT*



CODE	tube Ø	A	B	C	D	E	min.pcs.
PUT 0400N	4	35.6	21.5	11	8	16	10
PUT 0600N	6	41.8	25.5	13	9	18	10
PUT 0800N	8	46.8	30.7	14.6	10	20	10
PUT 1000N	10	51.4	34.5	17.6	11	22	10
PUT 1200N	12	58	39.5	21	12.7	25.5	10
PUT 1600N	16	69	47.5	26	15	30	10

PGT

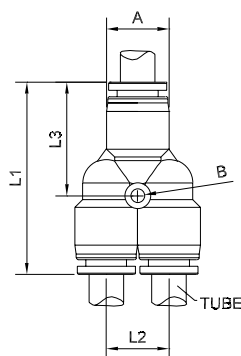
REDUCER TEE CONNECTOR / **T RÉDUCTION** / *INTERMEDIO A T RIDOTTO*



CODE	tube 1 Ø	tube 2 Ø	A	B	C	D	E	F	G	min.pcs.
PGT 0604N	6	4	41.8	25	13	9	18	6.5	3.2	10
PGT 0806N	8	6	46.8	30.7	14.6	10	20	6.5	3.2	10
PGT 1008N	10	8	51.4	34.1	17.6	11	22	6.5	3.2	10
PGT 1210N	12	10	58	39.3	21	12.7	25.5	6.5	3.2	10

PY

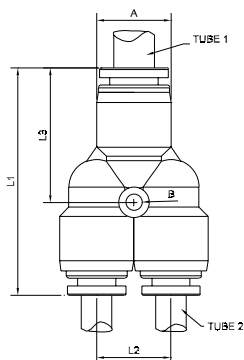
Y CONNECTOR / **Y** / *INTERMEDIO A Y*



CODE	tube Ø	A	B	L1	L2	L3	min.pcs.
PY 0400N	4	10.9	3.2	34.6	11	20	10
PY 0600N	6	12.9	3.2	36	13.2	23.3	10
PY 0800N	8	14.7	3.2	44.8	14.6	26.5	10
PY 1000N	10	18	3.2	48.5	17.6	27.5	10
PY 1200N	12	21	3.2	55.1	21	33.7	10
PY 1600N	16	26	4.2	59.6	26	36.8	10

PW

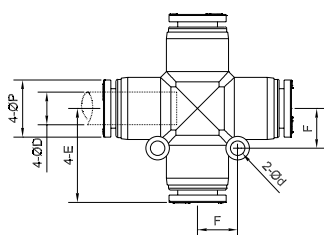
REDUCED Y CONNECTOR / **Y RÉDUCTION** / *INTERMEDIO A Y RIDOTTO*



CODE	tube 1 Ø	tube 2 Ø	A	B	L1	L2	L3	min.pcs.
PW 0604N	6	4	12.9	3.2	35.5	13.2	20	10
PW 0806N	8	6	14.7	3.2	44.8	14.6	23.3	10
PW 1008N	10	8	18	3.2	48.1	17.6	26.5	10
PW 1210N	12	10	21	3.2	54.9	21	27.5	10

PZA

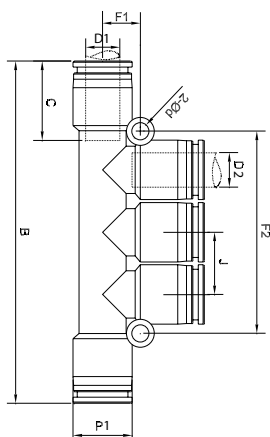
CROSS CONNECTOR / **CROIX JUNCTION** / *GIUNZIONE A CROCE*



CODE	ØD	P	C	E	F	d	min.pcs.
PZA 0400N	4	10	15.5	17.7	8	3.2	10
PZA 0600N	6	12.8	15.6	20.5	9.5	3.2	10
PZA 0800N	8	13.8	18	22.8	10.2	3.2	10
PZA 1000N	10	16.8	19.3	26.3	12	3.2	10
PZA 1200N	12	19.8	21	29.3	14	3.2	10

PKG

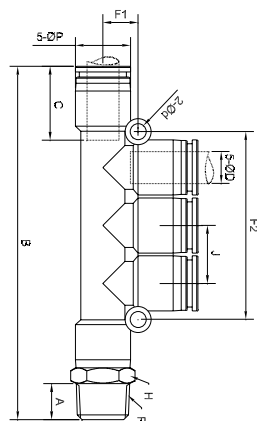
MULTI TEE CONNECTOR / **MULTI T** / **MULTIT**



CODE	D1	D2	P1	B	C	F1	F2	J	Ød	min.pcs.
PKG 0604N	6	4	12.8	60.2	15.6	8.8	40.4	13	3.2	10
PKG 0804N	8	4	13.8	60.8	18	8.8	40.4	13	3.2	10
PKG 0806N	8	6	13.8	61.5	18	8.8	40.4	13	3.2	10
PKG 1006N	10	6	16.8	81.6	21	10	47	14.5	4	10
PKG 1008N	10	8	16.8	80	19.3	10	47	14.5	4	10
PKG 1210N	12	10	19.8	81.6	21	10	47	14.5	4	10

PKD

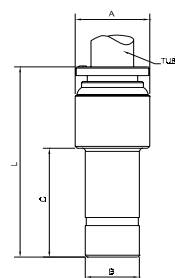
MULTI TEE CONNECTOR TAPER / **MULTI T CONIQUE** / **MULTI T MASCHIO CONICO**



CODE	ØD1	ØD2	R	P1	P2	A	B	C1	C2	F1	F2	H	J	d
PKD 060401N	6	4	R1/8	12.8	10	7.5	67.2	15.6	15.5	8.8	40.4	12	13	3.2
PKD 080402N	8	4	R1/4	13.8	10	9	69	18	15.5	8.8	40.4	14	13	3.2
PKD 080602N	8	6	R1/4	13.8	12.8	9	9.4	18	15.6	8	40.4	14	14.5	4
PKD 100803N	10	8	R3/8	16.8	13.8	11	90.3	19.3	18	10	47	17	14.5	4

PGJ

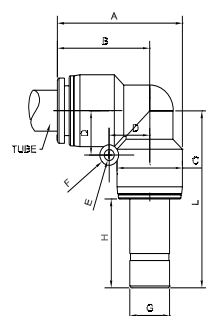
REDUCER / **RÉDUCTION** / **RIDUZIONE CODOLO TUBO**



CODE	tube Ø	A	B	C	L	min.pcs.
PGJ 0604N	4	10.5	6	19.5	32.5	10
PGJ 0804N	4	10.5	8	20	35.5	10
PGJ 0806N	6	12.5	8	20	36.4	10
PGJ 1006N	6	12.5	10	24	38.4	10
PGJ 1008N	8	14.5	10	24	39.2	10
PGJ 1206N	6	12.5	12	27.5	43.5	10
PGJ 1208N	8	14.5	12	27.5	44	10
PGJ 1210N	10	17.5	12	27.5	48.1	10

PLJ

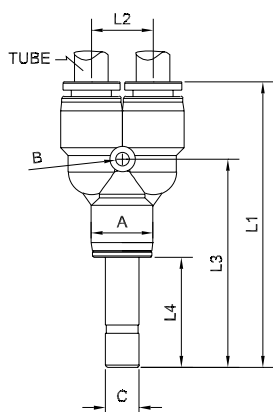
ELBOW WITH STEM / **ÉQUERRE AVEC TIGE** / **CODOLO INTERMEDIO A L**



CODE	tube Ø	A	B	C	D	E	G	H	L	min.pcs.
PLJ 0400N	4	21.5	17.8	11	8	3.2	4	19.5	34.5	10
PLJ 0600N	6	25.5	20.9	13	9	3.2	6	19.5	37.6	10
PLJ 0800N	8	30.7	23.4	14.6	10	3.2	8	20	39.6	10
PLJ 1000N	10	34.5	25.7	17.6	11	3.2	10	24	42.4	10
PLJ 1200N	12	39.5	29	21	12.7	3.2	12	27.5	49.3	10

PYJ

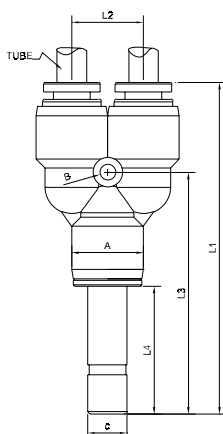
Y WITH STEM / Y AVEC TIGE / CODOLO INTERMEDIO A Y



CODE	tube Ø	A	B	C	L1	L2	L3	L4	min.pcs.
PYJ 0400N	4	10.9	3.2	4	51.3	11	36.7	19.5	10
PYJ 0600N	6	12.9	3.2	6	51.7	13.2	39.5	19.5	10
PYJ 0800N	8	14.7	3.2	8	61.5	14.6	43.2	20	10
PYJ 1000N	10	18	3.2	10	68.4	17.6	47.8	24	10
PYJ 1200N	12	21	3.2	12	78.5	21	57.3	27.5	10

PWJ

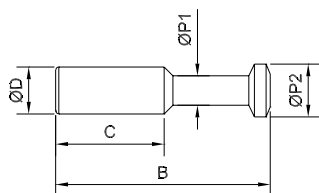
REDUCED Y WITH STEM / Y RÉDUIT AVEC TIGE / CODOLO INTERMEDIO A Y RIDOTTO



CODE	tube Ø	A	B	C	L1	L2	L3	L4	min.pcs.
PWJ 0604N	4	10.9	3.2	6	51.3	13.2	36.7	19.5	10
PWJ 0806N	6	12.9	3.2	8	52.2	14.6	39.5	19.5	10
PWJ 1008N	8	14.7	3.2	10	65.5	17.6	43.2	20	10
PWJ 1210N	10	18	3.2	12	71.9	21	47.8	24	10

PP

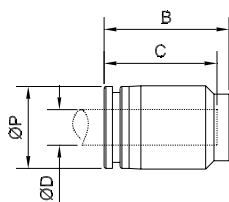
MALE PLUG / BOUCHON MALE / TAPPO MASCHIO



CODE	D	P1	P2	B	C	min.pcs.
PP 0400N	4	3	5	30.2	15.5	10
PP 0600N	6	4	7	33.6	18	10
PP 0800N	8	5	9	36.6	18.5	10
PP 1000N	10	5	11	40.1	21	10
PP 1200N	12	6	13	43.5	23	10

PPF

FEMALE PLUG / BOUCHON FEMELLE / TAPPO FEMMINA



CODE	tube Ø	P	B	C	min.pcs.
PPF 0400N	4	10	18	15.5	10
PPF 0600N	6	12.8	20	18	10
PPF 0800N	8	13.8	21	18	10
PPF 1000N	10	16.8	22	19.3	10
PPF 1200N	12	19.8	23	21	10