

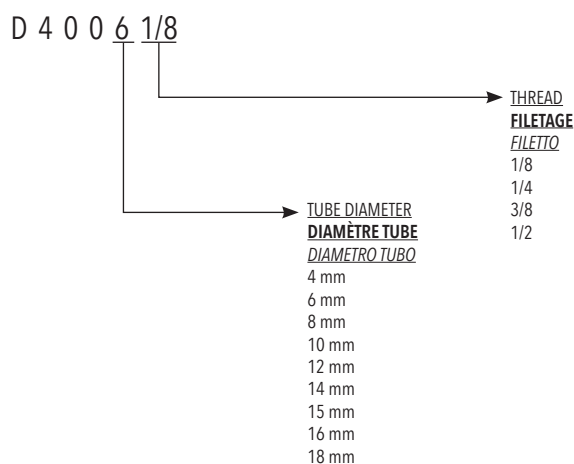


Compression fittings are so defined because the tube closing on the fitting is made by a cutting compression ogive which holds on the tube.
 Compression fittings are suitable for the assembly of rigid tubes (copper, brass, ...); for possible use of "plastic" tubes a special stiffener (cod. D414) is necessary to be inserted in the tube until the suitable support. All fittings belonging to this category have been planned according to DIN rules which control the product.

Le raccord de compression est ainsi défini car le serrage du tuyau sur le raccord se fait au moyen de la compression d'une olive qui va s'accrocher au tuyau lui-même.
Le raccord de compression est adapté dans l' assemblage de tubes rigides (cuivre, laiton, etc.); mais l'utilisation de tubes "plastique" est possible , utilisez une fourrure (code D414) qui sera insérée dans le tuyau jusqu'à ce que le sertissage soit garanti. Tous les accessoires de la gamme sont conçus selon les normes DIN.

I raccordi a compressione vengono così definiti in quanto il serraggio del tubo sul raccordo avviene mediante la compressione di un'ogiva tagliente che va ad aggrapparsi al tubo stesso. I raccordi a compressione sono adatti negli assemblaggi di tubi rigidi (rame, ottone, ecc.); per eventuali utilizzi di tubi "plastici" è necessario utilizzare un apposito rinforzo (cod. D414) che va inserito all'interno del tubo fino all'apposita battuta di appoggio. Tutti i raccordi appartenenti a questa categoria sono stati progettati seguendo le norme DIN che regolamentano il prodotto.

ORDERING CODE / CODIFICATIONS / CHIAVE DI CODIFICA

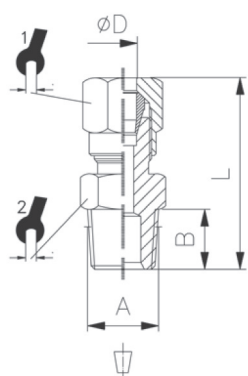


TECHNICAL DATA / DONNÉES TECHNIQUES / DATI TECNICI

| | |
|---|--|
| Fields of application / Domaine d'application / Campi di impiego | Pneumatic and hydraulic systems Circuits pneumatiques et hydrauliques Circuiti pneumatici e idraulici |
| Temperature range / Température d'utilisation / Temperatura di esercizio | -20°C / +80°C |
| Max operating pressure / Pression d'utilisation max. / Pressione massima | 60 bar |
| Material / Matière / Materiale | Brass / Laiton / Ottone UNI EN 12164 CW 614N Brass / Laiton / Ottone UNI EN 12165 CW 617N |
| Surface used / Traitement de surface / Trattamento superficiale | Nickel-plating / Nickelage / Nichelatura |
| Recommended tubes / Tubes recommandés / Tubi raccomandati | For metal pipes (copper, brass, steel, aluminium etc.) Tubes métalliques (cuivre, laiton, acier, aluminium etc.) Tubi metallici (rame, ottone, acciaio, alluminio ecc.) |

D401

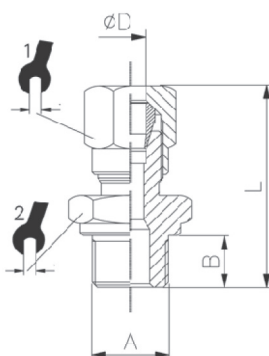
STRAIGHT MALE ADAPTOR TAPER / **DROIT MÂLE CONIQUE** / DIRITTO MASCHIO CONICO



| CODE | ØD | A | B | L | | | min.pcs. |
|-------------|------|------|------|------|----|----|----------|
| D401 4-1/8 | 4,0 | R1/8 | 8,0 | 27,0 | 10 | 10 | 10 |
| D401 6-1/8 | 6,0 | R1/8 | 8,0 | 28,0 | 12 | 12 | 10 |
| D401 6-1/4 | 6,0 | R1/4 | 11,0 | 32,5 | 12 | 14 | 10 |
| D401 8-1/8 | 8,0 | R1/8 | 8,0 | 29,5 | 14 | 12 | 10 |
| D401 8-1/4 | 8,0 | R1/4 | 11,0 | 33,0 | 14 | 14 | 10 |
| D401 8-3/8 | 8,0 | R3/8 | 11,5 | 33,0 | 14 | 17 | 10 |
| D401 10-1/4 | 10,0 | R1/4 | 11,0 | 37,5 | 19 | 17 | 10 |
| D401 10-3/8 | 10,0 | R3/8 | 11,5 | 38,0 | 19 | 17 | 10 |
| D401 10-1/2 | 10,0 | R1/2 | 14,0 | 40,5 | 19 | 22 | 10 |
| D401 12-3/8 | 12,0 | R3/8 | 11,5 | 39,0 | 22 | 19 | 10 |
| D401 12-1/2 | 12,0 | R1/2 | 14,0 | 41,0 | 22 | 22 | 10 |
| D401 14-1/2 | 14,0 | R1/2 | 14,0 | 42,5 | 27 | 22 | 10 |
| D401 15-1/2 | 15,0 | R1/2 | 14,0 | 42,5 | 27 | 22 | 10 |
| D401 16-1/2 | 16,0 | R1/2 | 14,0 | 42,0 | 30 | 24 | 10 |
| D401 18-1/2 | 18,0 | R1/2 | 14,0 | 43,0 | 32 | 26 | 10 |

D402

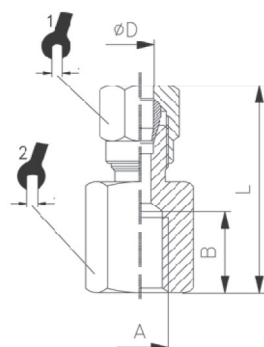
STRAIGHT MALE ADAPTOR PARALLEL / **DROIT MÂLE CYLINDRIQUE** / DIRITTO MASCHIO CILINDRICO



| CODE | ØD | A | B | L | | | min.pcs. |
|-------------|------|------|-----|------|----|----|----------|
| D402 4-1/8 | 4,0 | G1/8 | 6,0 | 25,0 | 10 | 14 | 10 |
| D402 6-1/8 | 6,0 | G1/8 | 6,0 | 26,0 | 12 | 14 | 10 |
| D402 6-1/4 | 6,0 | G1/4 | 8,0 | 29,5 | 12 | 17 | 10 |
| D402 8-1/8 | 8,0 | G1/8 | 6,0 | 27,5 | 14 | 14 | 10 |
| D402 8-1/4 | 8,0 | G1/4 | 8,0 | 30,0 | 14 | 17 | 10 |
| D402 8-3/8 | 8,0 | G3/8 | 9,0 | 30,5 | 14 | 19 | 10 |
| D402 10-1/4 | 10,0 | G1/4 | 8,0 | 34,5 | 19 | 17 | 10 |
| D402 10-3/8 | 10,0 | G3/8 | 9,0 | 36,0 | 19 | 19 | 10 |

D403

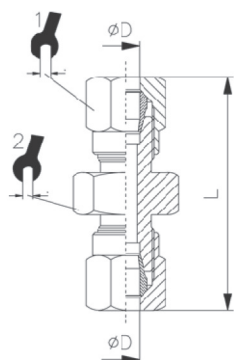
STRAIGHT FEMALE ADAPTOR / **DROIT FEMELLE** / DIRITTO FEMMINA



| CODE | ØD | A | B | L | | | min.pcs. |
|-------------|----|------|------|------|----|----|----------|
| D403 4-1/8 | 4 | G1/8 | 8,0 | 24,5 | 10 | 14 | 10 |
| D403 6-1/8 | 6 | G1/8 | 8,0 | 26,0 | 12 | 14 | 10 |
| D403 6-1/4 | 6 | G1/4 | 11,0 | 30,5 | 12 | 17 | 10 |
| D403 8-1/8 | 8 | G1/8 | 8,0 | 26,5 | 14 | 14 | 10 |
| D403 8-1/4 | 8 | G1/4 | 11,0 | 31,0 | 14 | 17 | 10 |
| D403 8-3/8 | 8 | G3/8 | 11,5 | 31,0 | 14 | 20 | 10 |
| D403 10-1/4 | 10 | G1/4 | 11,0 | 35,5 | 19 | 17 | 10 |
| D403 10-3/8 | 10 | G3/8 | 11,5 | 36,5 | 19 | 20 | 10 |
| D403 12-3/8 | 12 | G3/8 | 11,5 | 37,0 | 22 | 20 | 10 |
| D403 12-1/2 | 12 | G1/2 | 15,0 | 38,5 | 22 | 24 | 10 |
| D403 14-1/2 | 14 | G1/2 | 15,0 | 40,0 | 27 | 24 | 10 |
| D403 15-1/2 | 15 | G1/2 | 15,0 | 40,5 | 27 | 24 | 10 |
| D403 16-1/2 | 16 | G1/2 | 15,0 | 41,5 | 30 | 24 | 10 |
| D403 18-1/2 | 18 | G1/2 | 15,0 | 43,0 | 32 | 24 | 10 |

D404

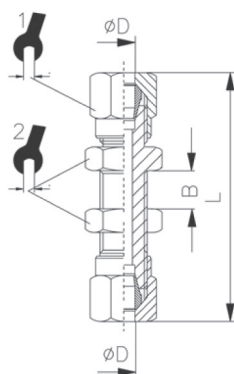
UNION CONNECTOR / **DROIT DOUBLE** / DIRITTO INTERMEDIO



| CODE | ØD | L | 1 | 2 | min.pcs. |
|---------|------|------|----|----|----------|
| D404 4 | 4,0 | 33,5 | 10 | 10 | 10 |
| D404 6 | 6,0 | 36,5 | 12 | 12 | 10 |
| D404 8 | 8,0 | 38,5 | 14 | 14 | 10 |
| D404 10 | 10,0 | 47,5 | 19 | 17 | 10 |
| D404 12 | 12,0 | 50,5 | 22 | 19 | 10 |
| D404 14 | 14,0 | 55,5 | 27 | 24 | 10 |
| D404 15 | 15,0 | 55,5 | 27 | 24 | 10 |
| D404 16 | 16,0 | 58,0 | 30 | 24 | 10 |
| D404 18 | 18,0 | 60,0 | 32 | 26 | 10 |

D416

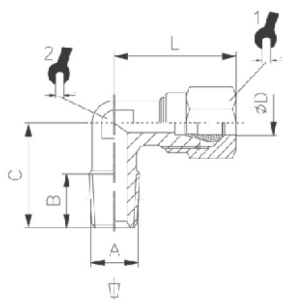
BULKHEAD CONNECTOR / **TRAVERSÉE DE CLOISON** / DIRITTO INTERMEDIO PASSALAMIERA



| CODE | ØD | Bmax | L | 1 | 2 | min.pcs. |
|---------|------|------|------|----|----|----------|
| D416 6 | 6,0 | 15,5 | 51,5 | 12 | 14 | 10 |
| D416 8 | 8,0 | 16,5 | 55,5 | 14 | 16 | 10 |
| D416 10 | 10,0 | 15,5 | 62,5 | 19 | 19 | 10 |
| D416 12 | 12,0 | 16,0 | 64,5 | 22 | 22 | 10 |
| D416 14 | 14,0 | 18,0 | 69,5 | 27 | 25 | 10 |
| D416 15 | 15,0 | 18,0 | 69,5 | 27 | 25 | 10 |

D405

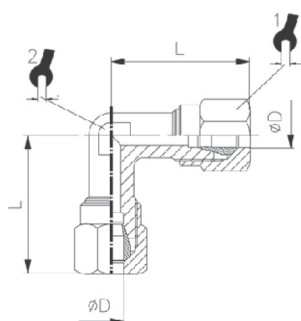
MALE ELBOW TAPER / **ÉQUERRE MALE CONIQUE** / L MASCHIO CONICO



| CODE | ØD | A | B | C | L | 1 | 2 | min.pcs. |
|-------------|----|------|------|------|------|----|----|----------|
| D405 4-1/8 | 4 | R1/8 | 8,0 | 16,0 | 21,0 | 10 | 9 | 10 |
| D405 6-1/8 | 6 | R1/8 | 8,0 | 16,0 | 22,0 | 12 | 9 | 10 |
| D405 6-1/4 | 6 | R1/4 | 11,0 | 20,0 | 24,5 | 12 | 11 | 10 |
| D405 8-1/8 | 8 | R1/8 | 8,0 | 17,0 | 24,0 | 14 | 11 | 10 |
| D405 8-1/4 | 8 | R1/4 | 11,0 | 20,0 | 24,0 | 14 | 11 | 10 |
| D405 8-3/8 | 8 | R3/8 | 11,5 | 24,0 | 27,0 | 14 | 13 | 10 |
| D405 10-1/4 | 10 | R1/4 | 11,0 | 23,5 | 32,0 | 19 | 13 | 10 |
| D405 10-3/8 | 10 | R3/8 | 11,5 | 24,0 | 32,0 | 19 | 13 | 10 |
| D405 10-1/2 | 10 | R1/2 | 14,0 | 28,5 | 34,0 | 19 | 15 | 10 |
| D405 12-3/8 | 12 | R3/8 | 11,5 | 25,5 | 34,5 | 22 | 15 | 10 |
| D405 12-1/2 | 12 | R1/2 | 14,0 | 28,5 | 34,5 | 22 | 15 | 10 |
| D405 14-1/2 | 14 | R1/2 | 14,0 | 30,0 | 38,0 | 27 | 17 | 10 |
| D405 15-1/2 | 15 | R1/2 | 14,0 | 30,0 | 38,0 | 27 | 17 | 10 |
| D405 16-1/2 | 16 | R1/2 | 14,0 | 31,5 | 39,5 | 30 | 19 | 10 |
| D405 18-1/2 | 18 | R1/2 | 14,0 | 34,0 | 44,0 | 32 | 22 | 10 |

D407

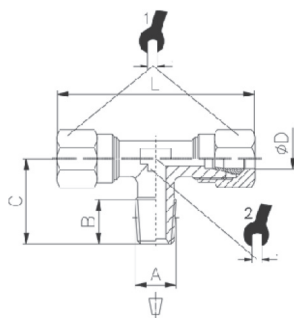
UNION ELBOW / ÉQUERRE DOUBLE / L INTERMEDIO



| CODE | ØD | L | 2 | 2 | min.pcs. |
|---------|------|------|----|----|----------|
| D407 4 | 4,0 | 21,0 | 10 | 9 | 10 |
| D407 6 | 6,0 | 23,0 | 12 | 9 | 10 |
| D407 8 | 8,0 | 24,0 | 14 | 11 | 10 |
| D407 10 | 10,0 | 32,0 | 19 | 13 | 10 |
| D407 12 | 12,0 | 34,5 | 22 | 15 | 10 |
| D407 14 | 14,0 | 38,0 | 27 | 17 | 10 |
| D407 15 | 15,0 | 38,0 | 27 | 17 | 10 |
| D407 16 | 16,0 | 39,5 | 30 | 19 | 10 |
| D407 18 | 18,0 | 44,0 | 32 | 22 | 10 |

D409

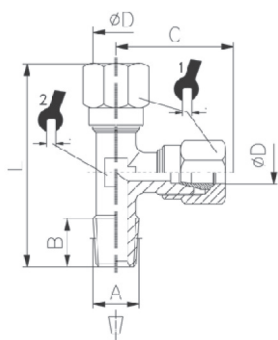
MALE TEE / T MALE CENTRAL / T MASCHIO CENTRALE



| CODE | ØD | A | B | C | L | 2 | 2 | min.pcs. |
|-------------|------|------|------|------|------|----|----|----------|
| D409 4-1/8 | 4,0 | R1/8 | 8,0 | 16,0 | 42,0 | 10 | 9 | 10 |
| D409 6-1/8 | 6,0 | R1/8 | 8,0 | 16,0 | 46,0 | 12 | 9 | 10 |
| D409 6-1/4 | 6,0 | R1/4 | 11,0 | 20,0 | 48,0 | 12 | 11 | 10 |
| D409 8-1/8 | 8,0 | R1/8 | 8,0 | 17,0 | 48,0 | 14 | 11 | 10 |
| D409 8-1/4 | 8,0 | R1/4 | 11,0 | 20,0 | 48,0 | 14 | 11 | 10 |
| D409 8-3/8 | 8,0 | R3/8 | 11,5 | 24,0 | 54,0 | 14 | 13 | 10 |
| D409 10-1/4 | 10,0 | R1/4 | 11,0 | 23,5 | 64,0 | 19 | 13 | 10 |
| D409 10-3/8 | 10,0 | R3/8 | 11,5 | 24,0 | 64,0 | 19 | 13 | 10 |
| D409 12-3/8 | 12,0 | R3/8 | 11,5 | 25,5 | 69,0 | 22 | 15 | 10 |
| D409 12-1/2 | 12,0 | R1/2 | 14,0 | 28,5 | 69,0 | 22 | 15 | 10 |
| D409 14-1/2 | 14,0 | R1/2 | 14,0 | 30,0 | 76,0 | 27 | 17 | 10 |
| D409 15-1/2 | 15,0 | R1/2 | 14,0 | 30,0 | 76,0 | 27 | 17 | 10 |
| D409 16-1/2 | 16,0 | R1/2 | 14,0 | 31,5 | 79,0 | 30 | 19 | 10 |
| D409 18-1/2 | 18,0 | R1/2 | 14,0 | 34,0 | 88,0 | 32 | 22 | 10 |

D410

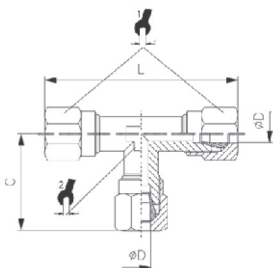
LATERAL MALE TEE / T MALE LATÉRAL / T LATERALE



| CODE | ØD | A | B | C | L | 2 | 2 | min.pcs. |
|-------------|------|------|------|------|------|----|----|----------|
| D410 4-1/8 | 4,0 | R1/8 | 8,0 | 21,0 | 37,0 | 10 | 9 | 10 |
| D410 6-1/8 | 6,0 | R1/8 | 8,0 | 23,0 | 39,0 | 10 | 9 | 10 |
| D410 6-1/4 | 6,0 | R1/4 | 11,0 | 24,5 | 44,5 | 12 | 11 | 10 |
| D410 8-1/8 | 8,0 | R1/8 | 8,0 | 24,0 | 41,0 | 14 | 11 | 10 |
| D410 8-1/4 | 8,0 | R1/4 | 11,0 | 24,0 | 44,0 | 14 | 11 | 10 |
| D410 8-3/8 | 8,0 | R3/8 | 11,5 | 27,0 | 51,0 | 14 | 13 | 10 |
| D410 10-1/4 | 10,0 | R1/4 | 11,0 | 32,0 | 55,5 | 19 | 13 | 10 |
| D410 10-3/8 | 10,0 | R3/8 | 11,5 | 32,0 | 56,0 | 19 | 13 | 10 |
| D410 12-3/8 | 12,0 | R3/8 | 11,5 | 34,5 | 60,0 | 22 | 15 | 10 |
| D410 12-1/2 | 12,0 | R1/2 | 14,0 | 34,5 | 63,0 | 22 | 15 | 10 |
| D410 14-1/2 | 14,0 | R1/2 | 14,0 | 38,0 | 68,0 | 27 | 17 | 10 |
| D410 15-1/2 | 15,0 | R1/2 | 14,0 | 38,0 | 68,0 | 27 | 17 | 10 |
| D410 16-1/2 | 16,0 | R1/2 | 14,0 | 39,5 | 71,0 | 30 | 19 | 10 |
| D410 18-1/2 | 18,0 | R1/2 | 14,0 | 44,0 | 78,0 | 32 | 22 | 10 |

D408

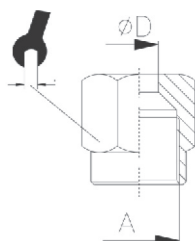
UNION TEE / T / T INTERMEDIO



| CODE | ØD | C | L | | | min.pcs. |
|---------|------|------|------|----|----|----------|
| D408 4 | 4,0 | 21,0 | 42,0 | 10 | 9 | 10 |
| D408 6 | 6,0 | 23,0 | 46,0 | 12 | 9 | 10 |
| D408 8 | 8,0 | 24,0 | 48,0 | 14 | 11 | 10 |
| D408 10 | 10,0 | 32,0 | 64,0 | 19 | 13 | 10 |
| D408 12 | 12,0 | 34,5 | 69,0 | 22 | 15 | 10 |
| D408 14 | 14,0 | 38,0 | 76,0 | 27 | 17 | 10 |
| D408 15 | 15,0 | 38,0 | 76,0 | 27 | 17 | 10 |
| D408 16 | 16,0 | 39,5 | 79,0 | 30 | 19 | 10 |
| D408 18 | 18,0 | 44,0 | 88,0 | 32 | 22 | 10 |

D411

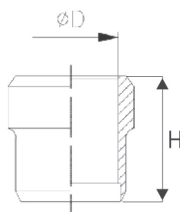
NUT / ECROU / DADO



| CODE | ØD | A | | min.pcs. |
|---------|------|---------|----|----------|
| D411 4 | 4,0 | M8x1 | 10 | 10 |
| D411 6 | 6,0 | M10x1 | 12 | 10 |
| D411 8 | 8,0 | M12x1 | 14 | 10 |
| D411 10 | 10,0 | M16x1,5 | 19 | 10 |
| D411 12 | 12,0 | M18x1,5 | 22 | 10 |
| D411 14 | 14,0 | M22x1,5 | 27 | 10 |
| D411 15 | 15,0 | M22x1,5 | 27 | 10 |
| D411 16 | 16,0 | M24x1,5 | 30 | 10 |
| D411 18 | 18,0 | M26x1,5 | 32 | 10 |

D412

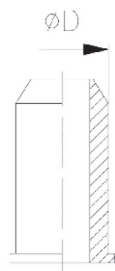
CONE / OLIVE / CONO



| CODE | ØD | H | min.pcs. |
|---------|------|------|----------|
| D412 4 | 4,0 | 6,0 | 10 |
| D412 6 | 6,0 | 7,0 | 10 |
| D412 8 | 8,0 | 7,0 | 10 |
| D412 10 | 10,0 | 10,0 | 10 |
| D412 12 | 12,0 | 10,0 | 10 |
| D412 14 | 14,0 | 10,0 | 10 |
| D412 15 | 15,0 | 10,0 | 10 |
| D412 16 | 16,0 | 10,0 | 10 |
| D412 18 | 18,0 | 10,5 | 10 |

D414

INTERNAL SUPPORT / FOURRURE / ANIMA DI RINFORZO



| CODE | ØD1 | ØD2 | H | min.pcs. |
|---------|------|------|------|----------|
| D414 4 | 2,5 | 3,5 | 10,0 | 10 |
| D414 6 | 4,0 | 5,5 | 12,0 | 10 |
| D414 8 | 6,0 | 7,5 | 13,0 | 10 |
| D414 9 | 6,0 | 7,5 | 13,0 | 10 |
| D414 10 | 8,0 | 9,5 | 14,0 | 10 |
| D414 12 | 10,0 | 11,5 | 16,0 | 10 |
| D414 14 | 12,0 | 13,5 | 16,0 | 10 |
| D414 15 | 12,5 | 14,5 | 17,0 | 10 |
| D414 16 | 14,0 | 15,5 | 18,0 | 10 |