



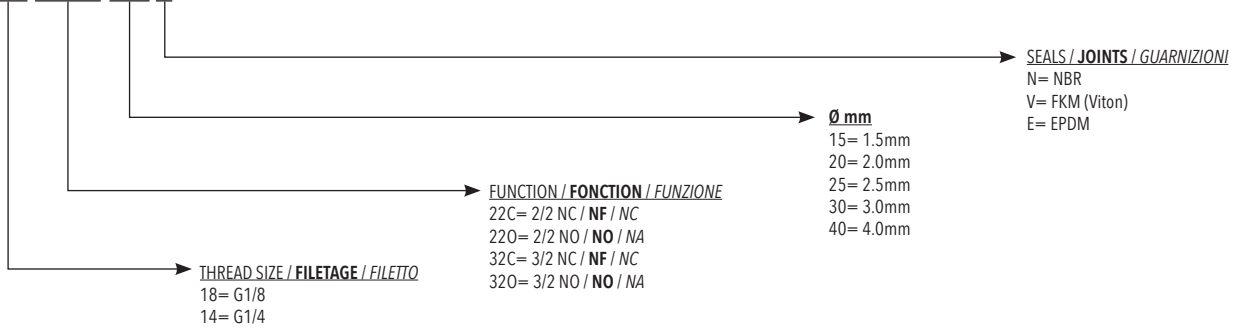
VQ direct electrovalves, are particularly suitable to control water, air, inert gas, steam and for all fluids in general (not aggressive).  
 The extremely compact brass body, gives to them the possibility to be used in very small places.  
 They're available in different versions as 2/2, 3/2 NC and NO and with NBR, Viton or EPDM seals.

**Les électrovannes de la série VQ à commande directe sont particulièrement appropriées pour contrôler l'eau, l'air, le gaz inerte, la vapeur d'eau et tous les fluides généralement non agressifs. Le corps en laiton est compact et permet une utilisation dans des espaces confinés.**  
**Plusieurs versions sont disponibles comme 2/2, 3/2 NF et NO et joints en NBR, Viton ou EPDM.**

*Le elettrovalvole della serie VQ a comando diretto sono particolarmente indicate per il controllo di acqua, aria, gas inerti, vapore e in generale di fluidi non aggressivi.*  
*Il corpo in ottone estremamente compatto ne permettono l'utilizzo in spazi molto ristretti.*  
*Sono disponibili diverse versioni tra cui 2/2 e 3/2 NC e NA e guarnizioni in NBR, Viton e EPDM.*

**ORDERING CODE / CODIFICATION / CHIAVE DI CODIFICA**

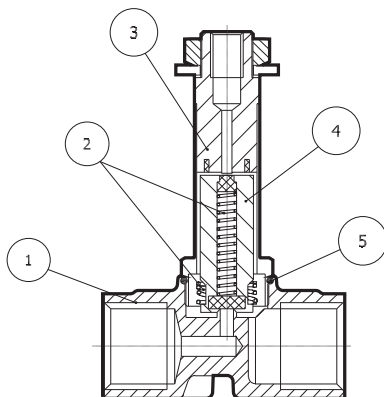
V Q D 1 8 3 2 C 1 5 N 0



**TECHNICAL CHARACTERISTICS / CARACTÉRISTIQUES TECHNIQUES / CARATTERISTICHE TECNICHE**

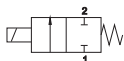
Max. allowable pressure / <b>Pression de service max.</b> / <i>Pressione massima ammissibile</i>			40 bar
Temperature range / <b>Température d'utilisation</b> / <i>Temperatura di utilizzo</i>	NBR	-10°C / +90°C	Air, inert gas, water max 75 °C, mineral oils, gas oil, fuel oils <b>Air, gas neutres, eau max. 75°C, huiles minerales, diesel, mazout</b> <i>Aria, gas inerti, acqua max 75 °C, oli minerali, gasolio, oli combustibili</i>
	FKM	-10°C / +140°C	Mineral oils, gasoline, gas oil, fuel oils <b>Huiles minerales, essence, mazout</b> <i>Oli minerali, benzina, oli combustibili</i>
	EPDM	-10°C / +140°C	Hot water, steam (max pressure 2.5 bar) <b>Eau chaude, vapeur (Pression de service max 2.5bar)</b> <i>Acqua calda, vapore (pressione max 2.5 bar)</i>

**COMPONENTS / COMPOSANTS / COMPONENTI**



N.	DESCRIPTION / DESCRIPTION / DESCRIZIONE	MATERIAL / MATIÈRE / MATERIALE
1	Body / <b>Corps</b> / <i>Corpo</i>	Brass / <b>Laiton</b> / <i>Ottone</i>
2	Springs / <b>Ressort</b> / <i>Molle</i>	Stainless Steel / <b>Acier inox</b> / <i>Acciaio inox</i>
3	Armature tube / <b>Tube de pilotage</b> / <i>Tubo guida</i>	Stainless Steel / <b>Acier inox</b> / <i>Acciaio inox</i>
4	Core / <b>Noyau</b> / <i>Nucleo</i>	Steel / <b>Acier inox</b> / <i>Acciaio inox</i>
5	Seals / <b>Joints</b> / <i>Guarnizioni</i>	NBR - EPDM - FKM

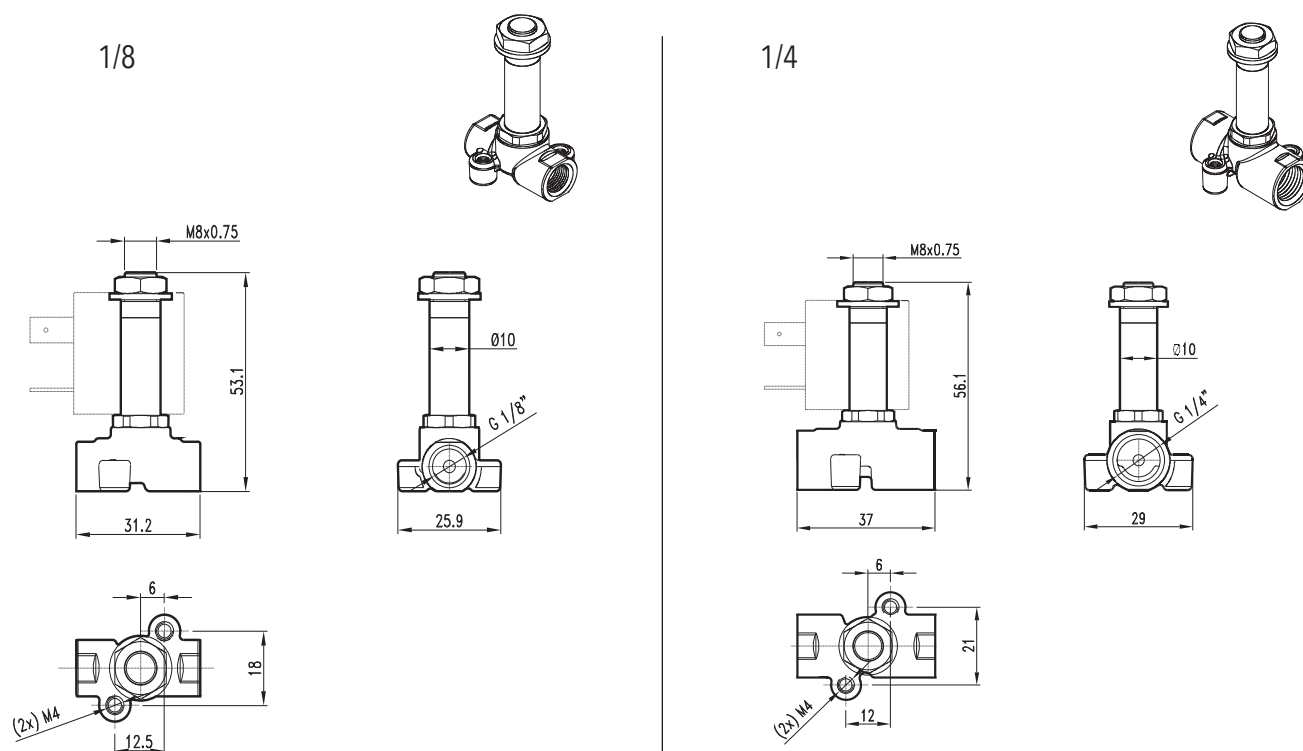
2/2 NC / NF / NC



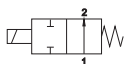
Code Code Codice	Seals Joints Guarnizioni	Thread size Filetage Filetto	Ø mm	Viscosity (Max cSt) Viscosité (Max cSt) Viscosità (Max cSt)	Kv m³/h	Power / Puissance Potenza		ΔP [bar]	
						DC (W)	AC (VA)	min	max
VQD1822C15N	NBR	1/8	1,5	25	0.06	6.5	-	0	21.1
VQD1822C15V	FKM					8	-	0	40
VQD1822C15E	EPDM					-	7.5	0	26
VQD1822C20N	NBR	1/8	2	37	0.09	6.5	-	0	11
VQD1822C20V	FKM					8	-	0	28.7
VQD1822C20E	EPDM					-	7.5	0	13.6
VQD1822C25N	NBR	1/8	2,5	53	0.15	6.5	-	0	32.3
VQD1822C25V	FKM					8	-	0	3.7
VQD1822C25E	EPDM					-	7.5	0	11
VQD1822C30N	NBR	1/8	3	53	0.20	6.5	-	0	16.4
VQD1822C30V	FKM					8	-	0	1.7
VQD1822C30E	EPDM					-	7.5	0	6.2
VQD1822C40N	NBR	1/8	4	53	0.30	6.5	-	0	3.6
VQD1822C40V	FKM					8	-	0	9.8
VQD1822C40E	EPDM					-	7.5	0	1
VQD1422C15N	NBR	1/4	1,5	25	0.06	6.5	-	0	2.2
VQD1422C15V	FKM					8	-	0	40
VQD1422C15E	EPDM					-	7.5	0	26
VQD1422C20N	NBR	1/4	2	37	0.09	6.5	-	0	40
VQD1422C20V	FKM					8	-	0	11
VQD1422C20E	EPDM					-	7.5	0	28.7
VQD1422C25N	NBR	1/4	2,5	53	0.15	6.5	-	0	13.6
VQD1422C25V	FKM					8	-	0	32.3
VQD1422C25E	EPDM					-	7.5	0	3.7
VQD1422C30N	NBR	1/4	3	53	0.20	6.5	-	0	11
VQD1422C30V	FKM					8	-	0	6.1
VQD1422C30E	EPDM					-	7.5	0	16.4
VQD1422C40N	NBR	1/4	4	53	0.30	6.5	-	0	9.8
VQD1422C40V	FKM					8	-	0	1.7
VQD1422C40E	EPDM					-	7.5	0	6.2

Valves / Valves / Valvole

DIRECT ACTING SOLENOID VALVES / ELECTROVANNES A COMMANDE DIRECTE / ELETTROVALVOLE AD AZIONAMENTO DIRETTO



2/2 NO / NO / NA

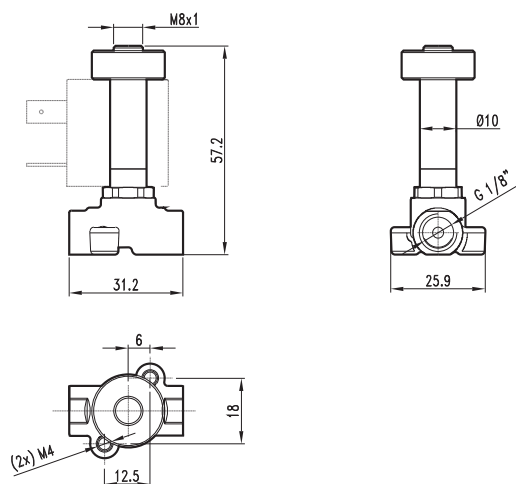
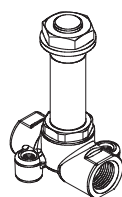


Code Code Codice	Seals Joints Guarnizioni	Thread size Filetage Filetto	Ø mm	Viscosity (Max cSt) Viscosité (Max cSt) Viscosità (Max cSt)	Kv m³/h	Power / Puissance Potenza		ΔP [bar]	
						DC (W)	AC (VA)	min	max
VQD1822015N	NBR					8	-	0	17
VQD1822015V	FKM	1/8	1,5	25	0.06	-	7.5	0	17
VQD1822015E	EPDM					-	11	0	17
VQD1822020N	NBR					8	-	0	9.5
VQD1822020V	FKM	1/8	2	37	0.09	-	7.5	0	9.5
VQD1822020E	EPDM					-	11	0	9.5
VQD1822025N	NBR					8	-	0	6.1
VQD1822025V	FKM	1/8	2,5	53	0.15	-	7.5	0	6.1
VQD1822025E	EPDM					-	11	0	6.1
VQD1822030N	NBR					8	-	0	4.2
VQD1822030V	FKM	1/8	3	53	0.20	-	7.5	0	4.2
VQD1822030E	EPDM					-	11	0	4.2
VQD1822040N	NBR					8	-	0	2.4
VQD1822040V	FKM	1/8	4	53	0.30	-	7.5	0	2.4
VQD1822040E	EPDM					-	11	0	2.4
VQD1422015N	NBR					8	-	0	17
VQD1422015V	FKM	1/4	1,5	25	0.06	-	7.5	0	17
VQD1422015E	EPDM					-	11	0	17
VQD1422020N	NBR					8	-	0	9.5
VQD1422020V	FKM	1/4	2	37	0.09	-	7.5	0	9.5
VQD1422020E	EPDM					-	11	0	9.5
VQD1422025N	NBR					8	-	0	6,1
VQD1422025V	FKM	1/4	2,5	53	0.15	-	7.5	0	6,1
VQD1422025E	EPDM					-	11	0	6,1
VQD1422030N	NBR					8	-	0	4.2
VQD1422030V	FKM	1/4	3	53	0.20	-	7.5	0	4.2
VQD1422030E	EPDM					-	11	0	4.2
VQD1422040N	NBR					8	-	0	2.4
VQD1422040V	FKM	1/4	4	53	0.30	-	7.5	0	2.4
VQD1422040E	EPDM					-	11	0	2.4

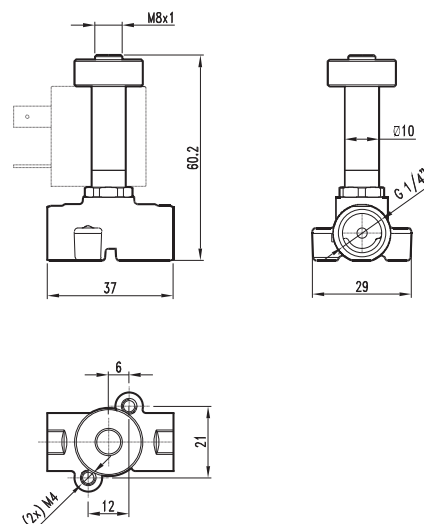
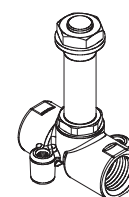
Valves / Valves / Valvole

DIRECT ACTING SOLENOID VALVES / ELECTROVANNES A COMMANDE DIRECTE / ELETTROVALVOLE AD AZIONAMENTO DIRETTO

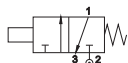
1/8



1/4

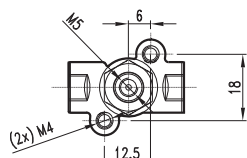
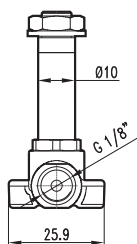
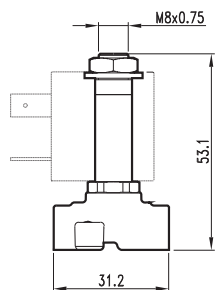
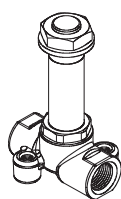


3/2 NC / NF / NC

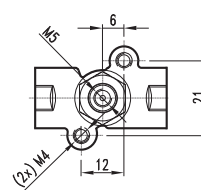
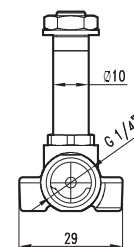
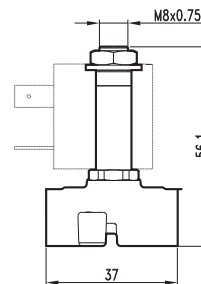
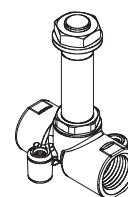


Code Code Codice	Seals Joints Guarnizioni	Thread size Filetage Filetto	Ø mm		Viscosity (Max cSt) Viscosité (Max cSt) Viscosità (Max cSt)	Kv m³/h		Power / Puissance Potenza		ΔP [bar]	
			IN	EXH		IN	EXH	DC (W)	AC (VA)	min	max
VQD1832C15N	NBR	1/8	1.5	1.4	25	0.06	0.05	6.5	-	0	13.5
VQD1832C15V	FKM							8	-	0	13.5
VQD1832C15E	EPDM							-	7.5	0	13.5
VQD1832C20N	NBR	1/8	2.0	1.4	37	0.09	0.05	6.5	-	0	8
VQD1832C20V	FKM							8	-	0	8
VQD1832C20E	EPDM							-	7.5	0	8
VQD1832C25N	NBR	1/8	2.5	1.4	53	0.15	0.05	6.5	-	0.2	5
VQD1832C25V	FKM							8	-	0	5
VQD1832C25E	EPDM							-	7.5	0	5
VQD1832C30N	NBR	1/8	3.0	1.4	53	0.20	0.05	6.5	-	0.8	3.5
VQD1832C30V	FKM							8	-	0	3.5
VQD1832C30E	EPDM							-	7.5	0	3.5
VQD1832C40N	NBR	1/8	4.0	1.4	53	0.30	0.05	6.5	-	0.7	2
VQD1832C40V	FKM							8	-	0	2
VQD1832C40E	EPDM							-	7.5	0	2
VQD1432C15N	NBR	1/4	1.5	1.4	25	0.06	0.05	6.5	-	0	13.5
VQD1432C15V	FKM							8	-	0	13.5
VQD1432C15E	EPDM							-	7.5	0	13.5
VQD1432C20N	NBR	1/4	2.0	1.4	37	0.09	0.05	6.5	-	0	8
VQD1432C20V	FKM							8	-	0	8
VQD1432C20E	EPDM							-	7.5	0	8
VQD1432C25N	NBR	1/4	2.5	1.4	53	0.15	0.05	6.5	-	0.2	5
VQD1432C25V	FKM							8	-	0	5
VQD1432C25E	EPDM							-	7.5	0	5
VQD1432C30N	NBR	1/4	3.0	1.4	53	0.20	0.05	6.5	-	0.8	3.5
VQD1432C30V	FKM							8	-	0	3.5
VQD1432C30E	EPDM							-	7.5	0	3.5
VQD1432C40N	NBR	1/4	4.0	1.4	53	0.30	0.05	6.5	-	0.7	2
VQD1432C40V	FKM							8	-	0	2
VQD1432C40E	EPDM							-	7.5	0	2

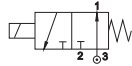
1/8



1/4



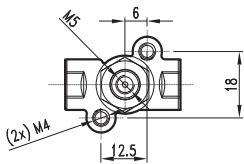
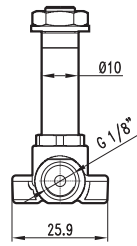
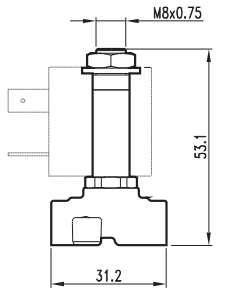
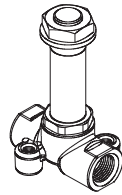
3/2 NO / NO / NA



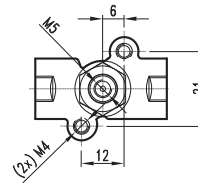
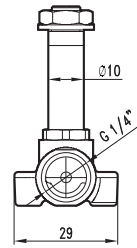
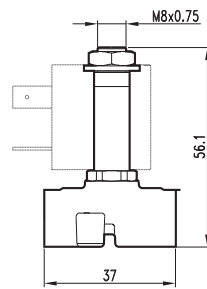
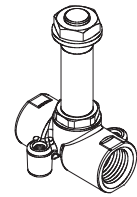
Code Code Codice	Seals Joints Guarnizioni	Thread size Filetage Filetto	Ø mm		Viscosity (Max cSt) Viscosité (Max cSt) Viscosità (Max cSt)	Kv m³/h		Power / Puissance Potenza		ΔP [bar]	
			IN	EXH		IN	EXH	DC (W)	AC (VA)	min	max
VQD1832015N	NBR	1/8	1.4	1.5	25	0.05	0.06	6.5	-	0	5.5
VQD1832015V	FKM							8	-	0	8.5
VQD1832015E	EPDM							-	7.5	0	7.5
VQD1832020N	NBR	1/8	1.4	2.0	37	0.05	0.09	6.5	-	0	5.5
VQD1832020V	FKM							8	-	0	8.5
VQD1832020E	EPDM							-	7.5	0	7.5
VQD1832025N	NBR	1/8	1.4	2.5	53	0.05	0.15	6.5	-	0	4
VQD1832025V	FKM							8	-	0	7
VQD1832025E	EPDM							-	7.5	0	6.5
VQD1432015N	NBR	1/4	1.4	1.5	25	0.05	0.06	6.5	-	0	5.5
VQD1432015V	FKM							8	-	0	8.5
VQD1432015E	EPDM							-	7.5	0	7.5
VQD1432020N	NBR	1/4	1.4	2.0	37	0.05	0.09	6.5	-	0	5.5
VQD1432020V	FKM							8	-	0	8.5
VQD1432020E	EPDM							-	7.5	0	7.5
VQD1432025N	NBR	1/4	1.4	2.5	53	0.05	0.15	6.5	-	0	4
VQD1432025V	FKM							8	-	0	7
VQD1432025E	EPDM							-	7.5	0	6.5
								-	11	0	10.5

Valves / Valves / Valvole

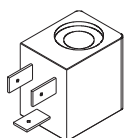
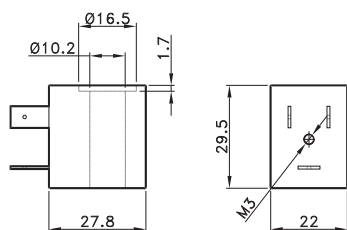
1/8



1/4



DIRECT ACTING SOLENOID VALVES / ELECTROVANNES A COMMANDE DIRECTE / ELETTRIVALVOLE AD AZIONAMENTO DIRETTO

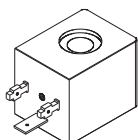
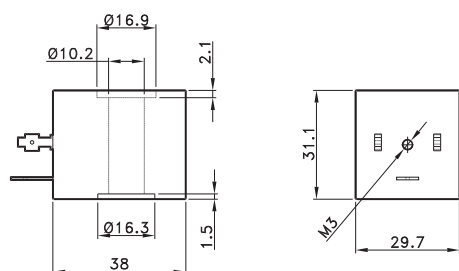


COILS 22 mm  
**BOBINE 22 mm**  
**BOBINE 22 mm**

CODE	Power / Absorption / Assorbimento	
	Tension Tension Tensione	Power Puissance Potenza
<b>BO4051012</b>	12 V DC	6,5 W
<b>BO4051024</b>	24 V DC	6,5 W
<b>BO4052024</b>	24 V AC	7,5 VA
<b>BO4052110</b>	110 V AC	7,5 VA
<b>BO4052220</b>	220 V AC	7,5 VA

TECHNICAL SPECIFICATIONS  
**CARACTERISTIQUES TECHNIQUES**  
**CARATTERISTICHE TECNICHE**

Tension tolerance / <b>Tolérance</b> / Tolleranza di tensione	+10%
Protection with connector / <b>Protection avec connecteur</b> / Protezione con connettore	IP65
Max working temperature / <b>Température max d'utilisation</b> / Temperatura max di esercizio	+ 50°C
Duty cycle / <b>Temps d'enclenchement</b> / Inserimento	ED 100%

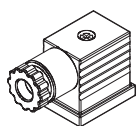
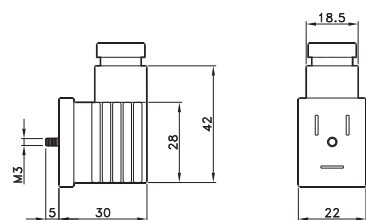


COILS 30 mm  
**BOBINE 30 mm**  
**BOBINE 30 mm**

CODE	Power / Absorption / Assorbimento	
	Tension Tension Tensione	Power Puissance Potenza
<b>BO4061012</b>	12 V DC	8 W
<b>BO4061024</b>	24 V DC	8 W
<b>BO4062024</b>	24 V AC	11 VA
<b>BO4062110</b>	110 V AC	11 VA
<b>BO4062220</b>	220 V AC	11 VA

TECHNICAL SPECIFICATIONS  
**CARACTERISTIQUES TECHNIQUES**  
**CARATTERISTICHE TECNICHE**

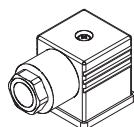
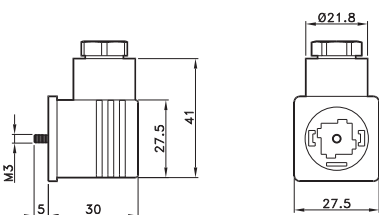
Tension tolerance / <b>Tolérance</b> / Tolleranza di tensione	+10%
Protection with connector / <b>Protection avec connecteur</b> / Protezione con connettore	IP65
Max working temperature / <b>Température max d'utilisation</b> / Temperatura max di esercizio	+ 50°C
Duty cycle / <b>Temps d'enclenchement</b> / Inserimento	ED 100%



CONNECTORS 22 mm  
**CONNECTEUR 22 mm**  
**CONNETTORI 22 mm**

CODE  
**AR40696**

Cable diameter / **Diamètre du câble** / Diametro cavo  
 6÷8 mm (22mm)  
 8÷11mm (30mm)



CONNECTORS 30 mm  
**CONNECTEUR 30 mm**  
**CONNETTORI 30 mm**

CODE  
**VX0027**

Cable diameter / **Diamètre du câble** / Diametro cavo  
 6÷8 mm (22mm)  
 8÷11mm (30mm)